

1Z0-567^{Q&As}

Primavera P6 Enterprise Project Portfolio Management 8 Essentials

Pass Oracle 1Z0-567 Exam with 100% Guarantee

Free Download Real Questions & Answers **PDF** and **VCE** file from:

<https://www.leads4pass.com/1z0-567.html>

100% Passing Guarantee
100% Money Back Assurance

Following Questions and Answers are all new published by Oracle
Official Exam Center

-  **Instant Download** After Purchase
-  **100% Money Back** Guarantee
-  **365 Days** Free Update
-  **800,000+** Satisfied Customers



QUESTION 1

Identify this icon:



- A. Customize Columns in the View
- B. Customize Tabs in the Details
- C. Customize GANTT Chart Options
- D. Customize and Save View

Correct Answer: C

Explanation:

See 3) below for the use of the Gantt Chart Options button.



Customizing the Resources Assignments Gantt Chart Bars Customize the settings for the Gantt chart view on the Resources Assignments page. You can set

features for up to three bars per assignment.

To customize the resource assignments Gantt chart bars:

- 1) Click Resources.
- 2) On the Resources navigation bar, click Assignments.
- 3) On the Assignments page, click View and choose:



Gantt Chart Options.

QUESTION 2

Select the statement that best describes "Manage Scenarios" functionality.

- A. You can create a portfolio for your own use or for sharing.

- B. You can view portfolio data in different forms.
- C. You can capture a snapshot of project data.
- D. You can select a portfolio to work with or execute commands.

Correct Answer: B

Explanation:

Choose Manage Scenarios display a list of all scenarios available to you, and to modify or delete scenarios. Scenarios are historical snapshots of project group

data you can use to aid analysis of project groups on the Portfolio Analysis and Capacity Planning pages.

For detailed information on modify scenarios, see Modify scenarios. For detailed information on deleting scenarios, see Delete scenarios.

Note: The Manage Scenarios page enables you to view the list of all scenarios available to you. Use this page to modify and delete scenarios, view or add notes

for a scenario, and send e-mail to users associated with a scenario. Each entry represents a project code, EPS node, or portfolio and includes an identifying icon,

name or title, and the number of associated scenarios. Only entries with existing scenarios are defined.

Getting Here: Click the Portfolios menu and choose Manage Scenarios

References:

QUESTION 3

You are in a governance organization that has established a project management methodology with work product and document requirements that must be included in every project. You are doing an audit prior to a gate review for a specific project. You are fairly certain that the project manager and project are in compliance with these requirements, but you cannot see the required work products and documents in the project workspace. How can you solve this problem?

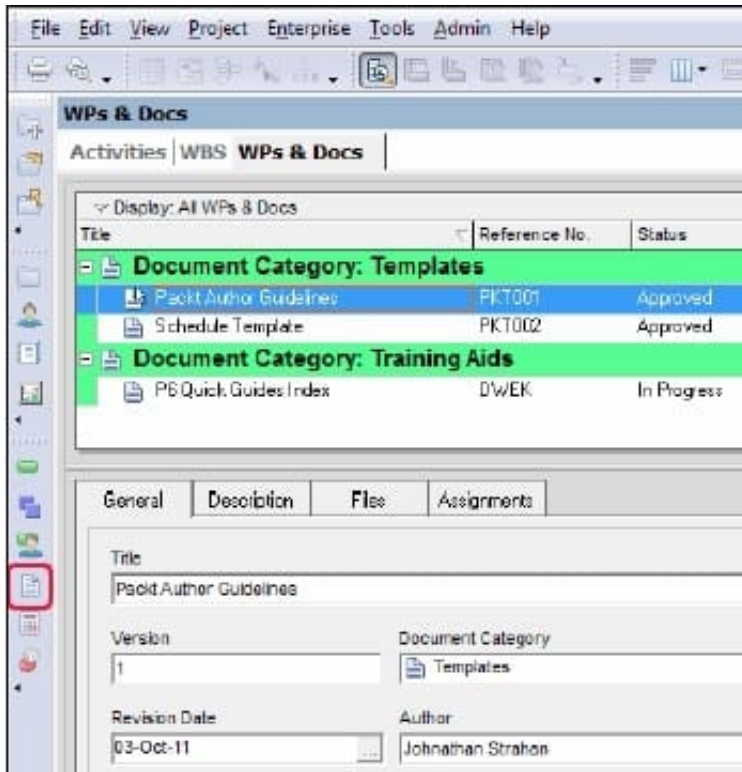
- A. Go to Activities and search for the Work Products and Documents by using an Activity view.
- B. Go to a dashboard and look for the Work Products and Documents in a portlet.
- C. Create a global activity code for required Work Products and Documents to call out activities.
- D. Go to the Project section and click Work Products and Documents to view the portlet.

Correct Answer: D

Explanation:

Before you can assign WPs and Docs, you must create them at the project level. On the left-hand toolbar, click on the icon to open up the WPs and Docs window

The WPs and Docs window is shown in the following screenshot:



Here you can add new documents to your project and categorize them. Note: Work Products and Documents (WPs and Docs) allows you to provide documentation for the project. Examples include material safety data sheets, punch lists, specifications, project manager notes and reports, product guides, and more. To add a document, choose Assign, and select the appropriate document. You may

QUESTION 4

Identify the business case that would support the creation of OBS elements to align with WBS elements within individual project plans.

- A. Legal/regulatory requirements that prohibit users from seeing data across functional areas maintaining smaller sets of project data
- B. Mitigate the risk of significantly variant project management skill levels across an organization
- C. Large projects with multiple cross-functional teams that will be responsible for updating/maintaining one set of project data
- D. Supporting data export/import process to minimize risk of degrading schedule quality

Correct Answer: C

Explanation: A work breakdown structure (WBS) is a hierarchical arrangement of the products and services produced during and by a project. The project is the highest level of the WBS while an individual activity required to create a product or service is the lowest level. Each project in the enterprise project structure (EPS) has its own WBS. When creating a project, the project manager typically develops the WBS first, assigns work products and documents to each WBS element, and then defines activities for performing the element's work. Specific earned value calculations can be specified for each WBS element, along with an organizational breakdown structure (OBS) element responsible for all work included in the WBS element.

QUESTION 5

Identify the key benefit of the Plan Resources view.

- A. You can create resource staffing scenarios using waterline analysis.
- B. You can identify staffing shortfalls within detailed project plans.
- C. You can view and analyze resource allocation without assignments to activities.
- D. You can view and assign resources mapped to appropriate roles with the highest skills.

Correct Answer: C

Explanation: Note:

*

You can delete a financial period that has high-level assignment planning values (as entered on the Plan Resources page of P6) as long as the financial period does not contain past period actuals. When you delete a financial period that has high-level assignment planning values, the values are deleted as well.

*

View options for including assignments made in the Plan Resources view in other allocation related view in Primavera

[1Z0-567 VCE Dumps](#)

[1Z0-567 Study Guide](#)

[1Z0-567 Exam Questions](#)