

200-401^{Q&As}

Managing Industrial Networks with Cisco Networking Technologies
(IMINS)

Pass Cisco 200-401 Exam with 100% Guarantee

Free Download Real Questions & Answers **PDF** and **VCE** file from:

<https://www.leads4pass.com/200-401.html>

100% Passing Guarantee
100% Money Back Assurance

Following Questions and Answers are all new published by Cisco
Official Exam Center

- ⚙ **Instant Download** After Purchase
- ⚙ **100% Money Back** Guarantee
- ⚙ **365 Days** Free Update
- ⚙ **800,000+** Satisfied Customers



QUESTION 1

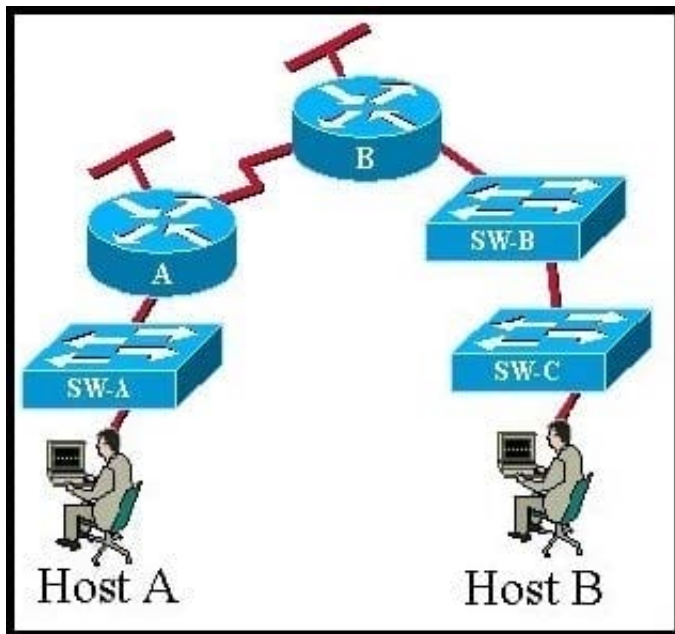
How does the optical time domain reflectometer use "backscattered" light to make measurements?

- A. It uses pulses to locate and test for sheath faults, damaged conductors, loose connectors, splices, bridge taps, split pairs, and other problems.
- B. It performs wiremapping to measure that all pins are correctly connected.
- C. It correlates the returned light pulses with a location in the fiber.
- D. It measures light-pulse width to measure that all pins are correctly connected.

Correct Answer: C

QUESTION 2

Exhibit: Refer to the exhibit. CCNA.com has the industrial network shown in the exhibit. All switches are configured as layer 2 switches and are using VLAN 1 as their management VLAN. Each VLAN 1 interface has been assigned the correct IP address. What is the purpose of assigning a default gateway to SW-C switch?



- A. allows connectivity between the VLAN 1 interface on SW-C and other devices in the network.
- B. allows connectivity between Host A and other devices in the network.
- C. allows connectivity between Host B and other devices in the network.
- D. allows the switch to pass traffic between Host A and Host B

Correct Answer: A

QUESTION 3

DRAG DROP

Select and Place:

Drag the steps on the left and arrange them in the order they should be completed when commissioning an industrial Ethernet switch on the right.	
Wire the switch to the DC power supply	Step 1
Wire the DC power supply	Step 2
Mount the switch on the DIN rail	Step 3
Connect Patch cords	Step 4
Wire the switch ground to common ground	Step 5
Perform Switch configuration	Step 6

Select and Place:

Drag the steps on the left and arrange them in the order they should be completed when commissioning an industrial Ethernet switch on the right.	
Wire the switch to the DC power supply	Step 1
Wire the DC power supply	Step 2
Mount the switch on the DIN rail	Step 3
Connect Patch cords	Step 4
Wire the switch ground to common ground	Step 5
Perform Switch configuration	Step 6

Correct Answer:

Drag the steps on the left and arrange them in the order they should be completed when commissioning an industrial Ethernet switch on the right.	
	Mount the switch on the DIN rail
	Wire the switch ground to common ground
	Wire the DC power supply
	Wire the switch to the DC power supply
	Perform Switch configuration
	Connect Patch cords

QUESTION 4

What is the purpose of a time domain reflectometer?

- A. It uses pulses to locate and test for sheath faults, damaged conductors, loose connectors, splices, bridge taps, split pairs, and other problems.
- B. It opens shorts and pinholes in cable shielding.
- C. It correlates the returned light pulses with a location in the fiber.
- D. It opens kinks and mismatched cable connectors.

Correct Answer: A

QUESTION 5

With a Cisco IE 2000 switch, what does a port status LED indicate when it is solid green?

- A. The port is sending or receiving data.
- B. A link is present.
- C. No link is present.
- D. There is a link fault.
- E. The port is not forwarding.

Correct Answer: B

[200-401 VCE Dumps](#)

[200-401 Practice Test](#)

[200-401 Study Guide](#)