

200-401^{Q&As}

Managing Industrial Networks with Cisco Networking Technologies
(IMINS)

Pass Cisco 200-401 Exam with 100% Guarantee

Free Download Real Questions & Answers **PDF** and **VCE** file from:

<https://www.leads4pass.com/200-401.html>

100% Passing Guarantee
100% Money Back Assurance

Following Questions and Answers are all new published by Cisco
Official Exam Center

- ⚙ **Instant Download** After Purchase
- ⚙ **100% Money Back** Guarantee
- ⚙ **365 Days** Free Update
- ⚙ **800,000+** Satisfied Customers



QUESTION 1

Exhibit:

```

interface FastEthernet1/1
switchport access vlan 102
!
interface FastEthernet1/2
switchport access vlan 104
!
interface FastEthernet1/3
switchport access vlan 103
!
interface FastEthernet1/4
switchport access vlan 101
!
interface FastEthernet1/5
switchport trunk native vlan 103
switchport mode trunk
!
interface Vlan1
no ip address

!
interface Vlan101
ip address 192.168.1.1 255.255.255.0
cip enable
!
interface Vlan102
ip address 192.168.2.1 255.255.255.0
cip enable
!
interface Vlan103
ip address 192.168.3.1 255.255.255.128
cip enable
!
interface Vlan104
ip address 192.168.3.129 255.255.255.128
cip enable
!
ip classless

```

Refer to the exhibit. Which port should a PLC with IP address 192.168.3.65 be plugged into in order to communicate to the rest of the network?

- A. FastEthernet1/1
- B. FastEthernet1/2
- C. FastEthernet1/3
- D. FastEthernet1/4
- E. FastEthernet1/5

Correct Answer: C

QUESTION 2

What is the purpose of a time domain reflectometer?

- A. It uses pulses to locate and test for sheath faults, damaged conductors, loose connectors, splices, bridge taps, split

pairs, and other problems.

- B. It opens shorts and pinholes in cable shielding.
- C. It correlates the returned light pulses with a location in the fiber.
- D. It opens kinks and mismatched cable connectors.

Correct Answer: A

QUESTION 3

An Ethernet cable is attached to a PC NIC and then attached to a switch port. The PC power is turned on and the switch port link LED turns green. The link light indicates what two conditions? (Choose two.)

- A. Layer 2 communication has been established between the PC and switch.
- B. The PC has received a DHCP address.
- C. Traffic is being sent from the switch to the PC.
- D. If flashing, the green LED indicates port speed of 100 Mb/s.
- E. The Layer 1 media is functioning between the PC and switch.
- F. The switch port is functioning as a half-duplex connection.

Correct Answer: AE

QUESTION 4

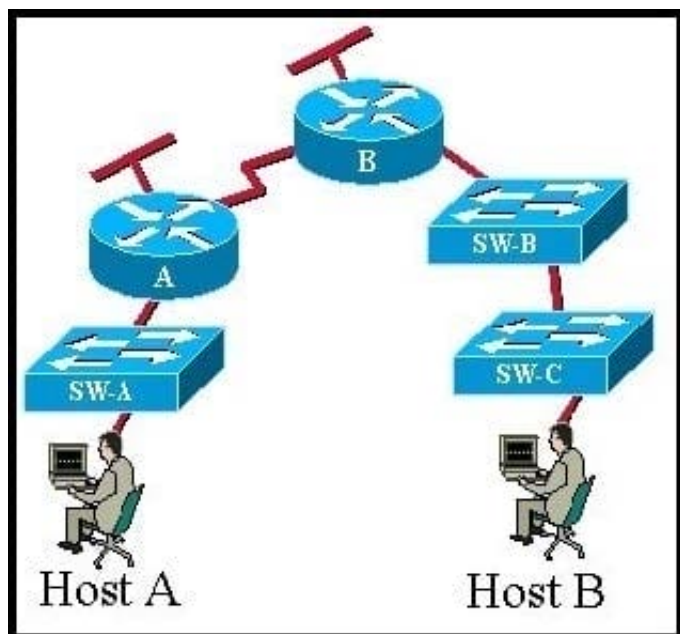
With a Cisco IE 2000 switch, what does a port status LED indicate when it is solid amber?

- A. The port is sending or receiving data.
- B. A link is present.
- C. No link is present.
- D. There is a link fault.
- E. The port is not forwarding.

Correct Answer: E

QUESTION 5

Exhibit: Refer to the exhibit. CCNA.com has the industrial network shown in the exhibit. All switches are configured as layer 2 switches and are using VLAN 1 as their management VLAN. Each VLAN 1 interface has been assigned the correct IP address. What is the purpose of assigning a default gateway to SW-C switch?



A. allows connectivity between the VLAN 1 interface on SW-C and other devices in the network.

B. allows connectivity between Host A and other devices in the network.

C. allows connectivity between Host B and other devices in the network.

D. allows the switch to pass traffic between Host A and Host B

Correct Answer: A

[200-401 PDF Dumps](#)

[200-401 VCE Dumps](#)

[200-401 Braindumps](#)