

## 352-001<sup>Q&As</sup>

CCDE Written Exam

### Pass Cisco 352-001 Exam with 100% Guarantee

Free Download Real Questions & Answers **PDF** and **VCE** file from:

<https://www.leads4pass.com/352-001.html>

100% Passing Guarantee  
100% Money Back Assurance

Following Questions and Answers are all new published by Cisco  
Official Exam Center

- ⚙ **Instant Download** After Purchase
- ⚙ **100% Money Back** Guarantee
- ⚙ **365 Days** Free Update
- ⚙ **800,000+** Satisfied Customers



## QUESTION 1

Which IPv4 addressing and routing scheme can increase the availability of a network service during a DoS attack?

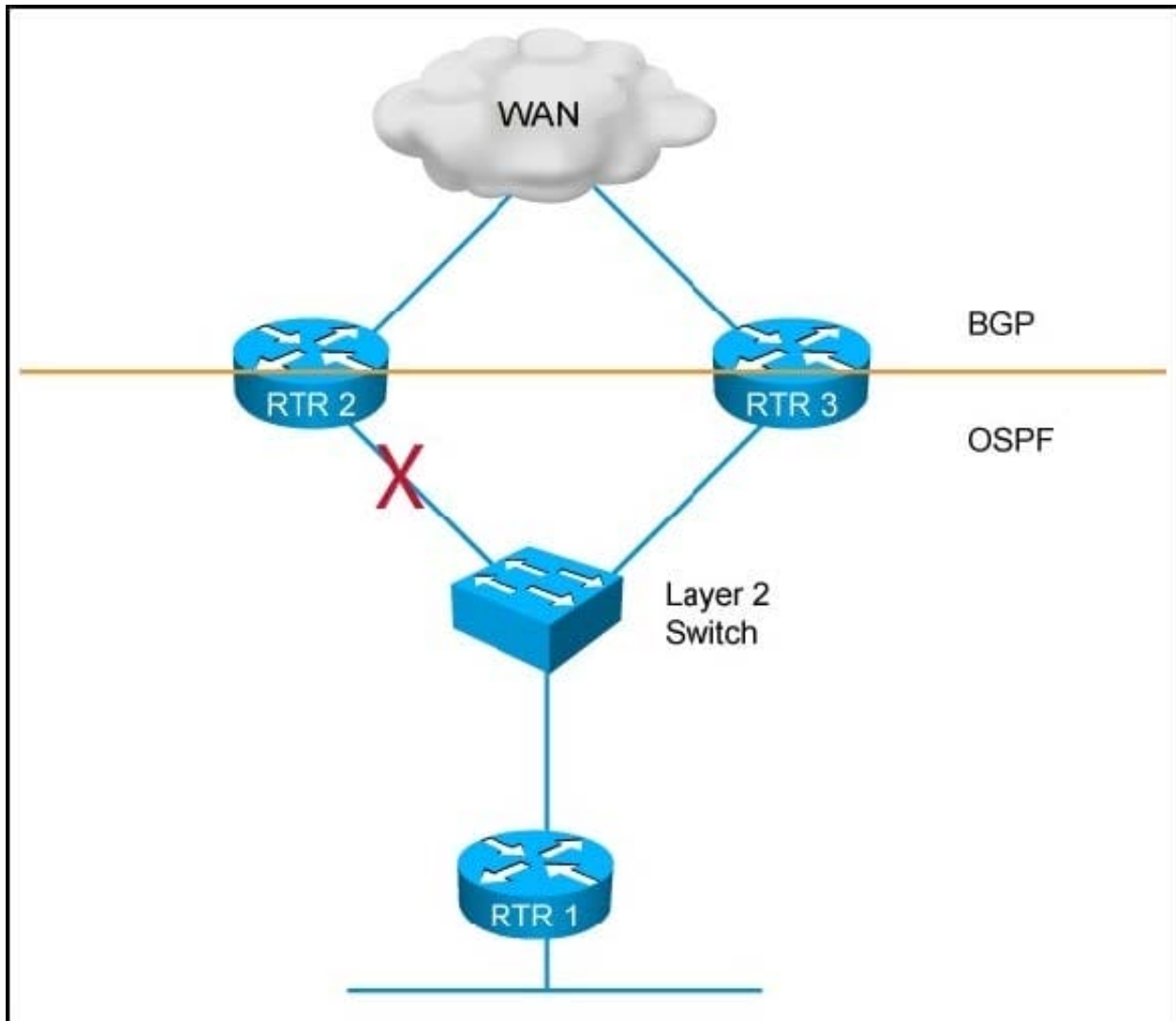
- A. unicast
- B. broadcast
- C. anycast
- D. multicast

Correct Answer: C

---

## QUESTION 2

Refer to the exhibit.



RTR 1 uses RTR 2 as the primary WAN exit point. When a failure occurs in the link connected to RTR 2 LAN, it takes about 40 seconds for RTR 1 to use the backup path via RTR 3.

Which two mechanisms can be used independently to improve the failure detection time to 1 second or less when RTR 1 failover to RTR3? (Choose two.)

- A. Configure EEM on RTR 2.
- B. Change OSPF throttling timer.
- C. Use BFD with OSPF between RTR 1 and RTR 2.
- D. Use BFD with OSPF between RTR 2 and RTR 3.
- E. Tune OSPF fast hello on all the routers.

Correct Answer: CE

### QUESTION 3

You are designing an IEEE 802.1X solution for a customer, where the network supports a large number of IP phones and printers.

You plan to configure MAC address bypass for the phones and printers. What is your primary design and security concern?

- A. the additional AAA traffic on the network
- B. the placement of the AAA server
- C. the potential of MAC address spoofing
- D. the scaling of the MAC address database

Correct Answer: C

---

## QUESTION 4

A multicast network is using bidirectional PIM. Which two actions, when combined, can achieve high availability so that two RPs within the same network can act in a redundant manner? (Choose two.)

- A. Use Anycast RP based on MSDP peering between the two RPs.
- B. Use a phantom RP address.
- C. Advertise routes for the two RPs with the same subnet mask through the unicast routing protocol.
- D. Advertise routes for the two RPs with different subnet mask lengths through the unicast routing protocol.
- E. Manipulate the administrative distance of the unicast routes to the two RPs.
- F. Manipulate the multicast routing table by creating static mroutes to the two RPs.

Correct Answer: BD

---

## QUESTION 5

The service provider that you work for wants to offer IPv6 internet service to its customers without upgrading all of its access equipment to support IPv6. Which transition technology do you recommend?

- A. CGN
- B. NAT64
- C. dual-stack CPE
- D. 6RD

Correct Answer: B