

## H12-721<sup>Q&As</sup>

HCIP-Security-CISN V3.0

### Pass Huawei H12-721 Exam with 100% Guarantee

Free Download Real Questions & Answers **PDF** and **VCE** file from:

<https://www.leads4pass.com/h12-721.html>

100% Passing Guarantee  
100% Money Back Assurance

Following Questions and Answers are all new published by Huawei  
Official Exam Center

-  **Instant Download** After Purchase
-  **100% Money Back** Guarantee
-  **365 Days** Free Update
-  **800,000+** Satisfied Customers



**QUESTION 1**

Which of the statement is correct about the Eth-trunk function? (Choose three answers) A. It improves communication bandwidth of the link

B. It improves data security

C. Traffic load balancing

D. It improve sthe reliability of the link

Correct Answer: ACD

---

**QUESTION 2**

Which of the statement is correct after going through the output of the command "display ike sa" which is shown below?

```
<sysname> display ike sa  
current ike sa number: 2
```

```
-----  
conn-id  peer          flag  phase vpn  
-----  
100      172.16.1.21:2048    RD    v2:1 public
```

flag meaning

```
RD--READY  ST--STAYALIVE  RL--REPLACED  FD--FADING  
TO--TIMEOUT TD--DELETING  NEG--NEGOTIATING  D--  
DPD
```

A. Phase 1 and Phase 2 has been established

B. agreements negotiated by IKE V2

C. VPN instance name is public

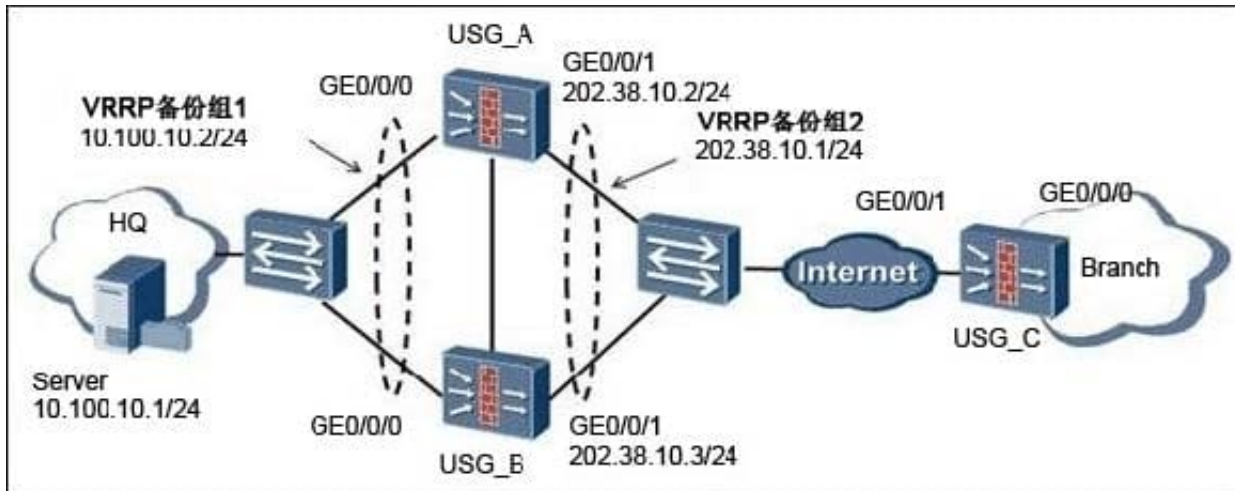
D. IPsec SA status is Ready

Correct Answer: B

---

**QUESTION 3**

In a Dual hot standby SSL VPN scenario as shown, the network administrator has enabled SSL extensions. Which of the following information about the configuration of SSL VPN functionality is correct?



- A. When you create a virtual gateway the Master will not be synchronized to the Slave.
- B. When configuring the network extension, the address pool with binds to the VRRP backup group number 2.
- C. USG\_A virtual SSL VPN gateway must use IP address 202.38.10.2
- D. USG\_B virtual SSL VPN gateway must use IP address 10.100.10.2

Correct Answer: B

**QUESTION 4**

The below information indicates that the real server is forced to USG unhealthy state and the real server 4.4.4.4 is currently in unhealthy state.

```
<USG> display slb rserver 1
Real Server information(Total 1)
```

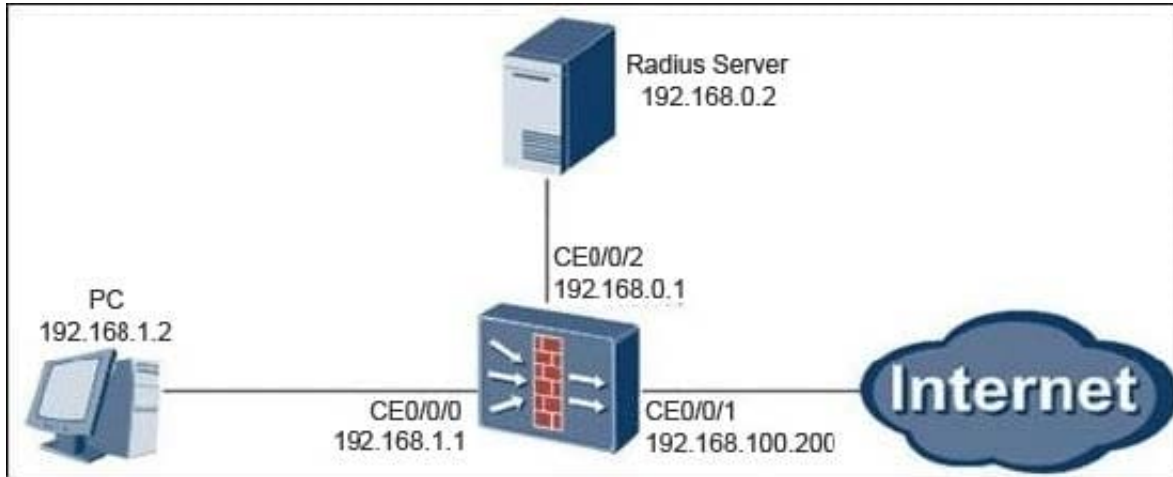
```
-----
Real Server ID      : 1
Real Server IP      : 4.4.4.4
Real Server Weight   : 32
Health Check Method : healthchk
Real Server Status   : inactive
Applied Group Number :
```

- A. TRUE
- B. FALSE

Correct Answer: B

**QUESTION 5**

When using Radius server to authenticate users, (topology diagram shown below) we not only need to ensure that the user name and password for the account exists on the Radius server, a firewall must be configured on a user name and password.



A. TRUE

B. FALSE

Correct Answer: B

[Latest H12-721 Dumps](#)[H12-721 PDF Dumps](#)[H12-721 VCE Dumps](#)