

## 199-01<sup>Q&As</sup>

Riverbed Certified Solutions Professional

### Pass Riverbed 199-01 Exam with 100% Guarantee

Free Download Real Questions & Answers **PDF** and **VCE** file from:

<https://www.leads4pass.com/199-01.html>

100% Passing Guarantee  
100% Money Back Assurance

Following Questions and Answers are all new published by Riverbed  
Official Exam Center

-  **Instant Download** After Purchase
-  **100% Money Back** Guarantee
-  **365 Days** Free Update
-  **800,000+** Satisfied Customers



## QUESTION 1

What should you do when you receive the following message?

[intercept.NOTICE] sending kickoff RST: 10.35.178.41:1169 -> 10.110.141.30:1031.

- A. Nothing. This is just a notice message.
- B. Verify whether the "Reset Existing Client Connections on Start Up" option is checked and uncheck it
- C. Switch off the Steelhead appliance
- D. Create a specific pass-through rule to bypass the above source and destination hosts
- E. Restart the Steelhead appliance

Correct Answer: B

---

## QUESTION 2

You have an existing Steelhead appliance deployment which is achieving excellent optimization at five sites. You have deployed a Steelhead appliance physically in-path at a new small branch office and all of your applications have become slower for this new branch office only. What is the likely cause?

- A. Incorrect in-path rules at the data-center
- B. Incorrect in-path rules at the new branch office
- C. Duplex mismatch between the new branch Steelhead and a connected device
- D. Duplex mismatch between the data-center Steelhead and a connected device
- E. Incorrect peering rules at the data-center
- F. Incorrect peering rules at the new branch office

Correct Answer: C

---

## QUESTION 3

Log messages in the Steelhead appliance Management Console such as "error=SMB\_SHUTDOWN\_ERR\_SEC\_SIG\_ENABLED" are an indication of what condition?

- A. The Steelhead appliance has entered admission control
- B. The Steelhead appliance has detected an asymmetric network
- C. The Steelhead appliance is configured with the incorrect speed or duplex on the Primary interface
- D. The Steelhead appliance is configured with the incorrect speed or duplex on of the in-path interfaces

E. The Steelhead appliance is configured in "Tunnel Mode"

F. The Steelhead appliance has detected Windows Server Message Block (SMB) signing

Correct Answer: F

## QUESTION 4

What are an Interceptor appliance's main functions? (Select 2)

A. Provides a way to intercept and redirect interesting traffic for optimization

B. Monitors multiple links and redirect interesting traffic over a cluster of Steelhead appliances in a logical in-path deployment

C. Replaces any existing Layer 4 switch in a given environment

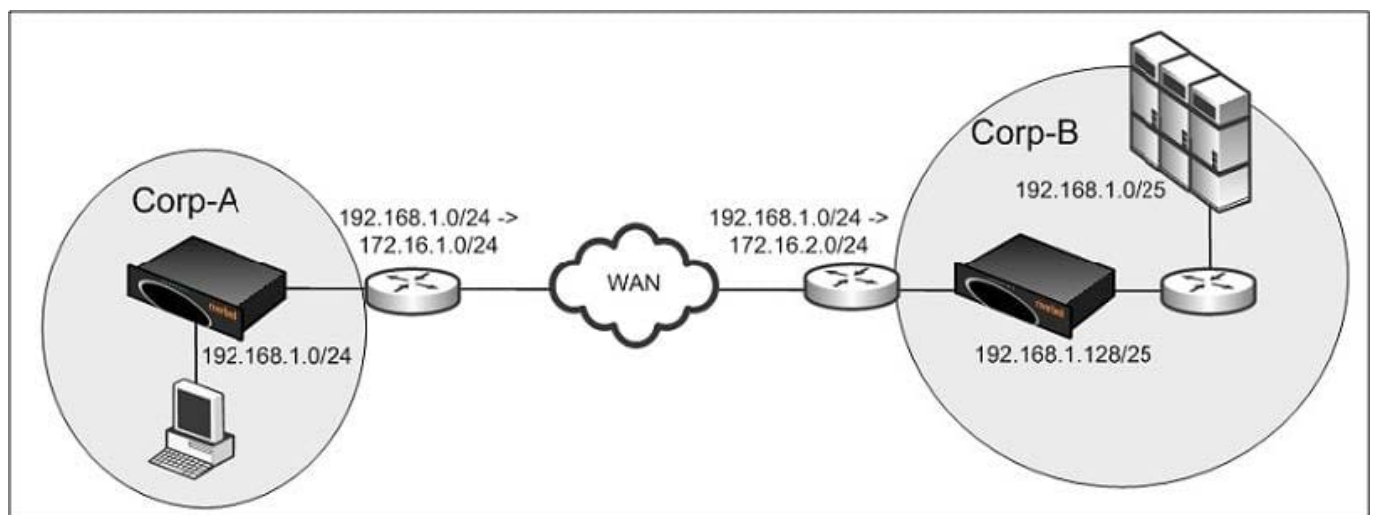
D. Used to configure and work with WCCP and PBR

E. Required component Steelhead appliances in all Steelhead appliance deployments

Correct Answer: AB

## QUESTION 5

Refer to the exhibit.



Corp-A and Corp-B have overlapping address space and therefore the network administrator implemented NAT to overcome this. Users from Corp-A NAT to 172.16.1.0/24 and users from Corp-B NAT to 172.16.2.0/24. Users in Corp-A use the destination address of 172.16.2.0/24 to access the resources in Corp-B. The servers in Corp-B use the client IP for authentication. What do you need to do in order to make this deployment work? (Select 2)

A. Configure Full Transparency

B. Configure out-of-path

- C. Configure Port Transparency
- D. Configure OOB Transparency
- E. Steelhead appliances cannot be deployed in this network

Correct Answer: AD

[199-01 VCE Dumps](#)

[199-01 Exam Questions](#)

[199-01 Braindumps](#)