



70-410^{Q&As}

Installing and Configuring Windows Server 2012

Pass Microsoft 70-410 Exam with 100% Guarantee

Free Download Real Questions & Answers **PDF** and **VCE** file from:

<https://www.lead4pass.com/70-410.html>

100% Passing Guarantee
100% Money Back Assurance

Following Questions and Answers are all new published by Microsoft
Official Exam Center

-  **Instant Download** After Purchase
-  **100% Money Back** Guarantee
-  **365 Days** Free Update
-  **800,000+** Satisfied Customers





QUESTION 1

Your company has a main office that contains 225 client computers. The client computers are located on a subnet that uses the network ID of 10.10.1.0/24. The company plans to open two branch offices. The offices will be configured as shown in the following table.

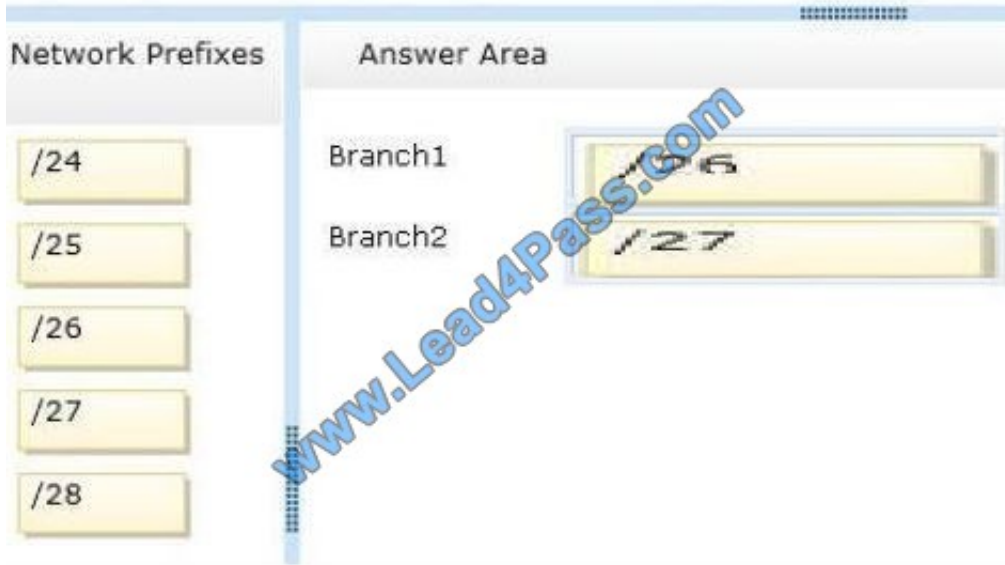
Office name	Number of client computers
Branch1	100
Branch2	50

You need to select a network prefix for each office to ensure that there are enough IPv4 addresses for each client computer. The solution must minimize the number of unused IP addresses. Which network prefixes should you select? To answer, drag the appropriate network prefix to the correct branch office in the answer area.

Select and Place:

The interface shows a list of network prefixes on the left and two target boxes on the right. The target boxes are labeled 'Branch1' and 'Branch2', each with a 'Network prefix' placeholder. A watermark 'www.lead4pass.com' is visible across the interface.

Correct Answer:



QUESTION 2

Your network contains an Active Directory domain named contoso.com. The domain contains a domain controller named Server1 that has the DNS Server server role installed. Server1 hosts a primary zone for contoso.com.

The domain contains a member server named Server2 that is configured to use Server1 as its primary DNS server.

From Server2, you run nslookup.exe as shown in the exhibit. (Click the Exhibit button.)



You need to ensure that when you run Nslookup, the correct name of the default server is displayed. What should you do?

- A. On Server1, create a reverse lookup zone.
- B. On Server1, modify the Security settings of the contoso.com zone.
- C. From Advanced TCP/IP Settings on Server1, add contoso.com to the DNS suffix list.
- D. From Advanced TCP/IP Settings on Server2, add contoso.com to the DNS suffix list.

Correct Answer: A



Make sure that a reverse lookup zone that is authoritative for the PTR resource record exists.

PTR records contain the information that is required for the server to perform reverse name lookups.

References:

<http://technet.microsoft.com/en-us/library/cc961417.aspx>

Exam Ref: 70-410: Installing and Configuring Windows Server 2012 R2, Chapter4: Deploying and configuring core network services, Objective 4.1: Configure IPv4 and IPv6 addressing, p.246

QUESTION 3

Your network contains an Active Directory domain named contoso.com. The domain contains 100 servers. The servers are contained in an organizational unit (OU) named Servers OU.

You need to create a group named Group1 on all of the servers in the domain. You must ensure that Group1 is added only to the servers. What should you configure?

- A. a Local Users and Groups preferences setting in a Group Policy linked to the Domain Controllers OU
- B. a Restricted Groups setting in a Group Policy linked to the domain
- C. a Local Users and Groups preferences setting in a Group Policy linked to ServersOU
- D. a Restricted Groups setting in a Group Policy linked to Servers OU

Correct Answer: C

Preferences in Group Policy linked to Servers OU allows you to centrally manage local users and groups on domain member computers and is this is the correct OU for the GPO change

Unlike Group Policy settings, which App1y to both local computer policy and Active Directory policy, Group Policy preferences only App1y to Active Directory policy.

You use preferences to configure many areas of the OS, including:

System devices, such as USB ports, floppy drives and removable media Network shares and mapping network shares to drive letters System and user environment variables

User and group accounts for the local computer

VPN and dial-up networking connections

Printer configuration and mapping

Registry settings, schedule tasks and system services

Settings for Folder Options, Internet Options and Regional and Language Options Settings for power schemes and power management

Start Menu properties and menu items



QUESTION 4

Your network contains an Active Directory domain named contoso.com. The domain contains servers named Server1 and Server2 that run Windows Server 2012 R2.

You create a windows PowerShell script named Script1.ps1 that contains the following configuration:

```
Configuration ConfigGroup1
{
  Node "Server1"
  {
    Group Group1
    {
      Ensure = "Present"
      Name = "Group1"
      Members = "User1"
    }
  }
}
ConfigGroup1
```

You need to apply the configuration to Server1. The solution must ensure that the configuration on Server1 can be updated by modifying a MOF file on Server2.

Which actions should you perform on each server?

To answer, select the appropriate server on which to perform each action in the answer area.

Hot Area:

Answer Area	
From the Windows PowerShell command prompt, run Script1.ps1.	<input type="checkbox"/> Server1 <input type="checkbox"/> Server2
From the Windows PowerShell command prompt, run the Set-DscLocalConfigurationManager cmdlet.	<input type="checkbox"/> Server1 <input type="checkbox"/> Server2
Install the Windows PowerShell Desired State Configuration Service.	<input type="checkbox"/> Server1 <input type="checkbox"/> Server2

Correct Answer:



Answer Area

From the Windows PowerShell command prompt, run Script1.ps1.

Server1
Server2

From the Windows PowerShell command prompt, run the Set-DscLocalConfigurationManager cmdlet.

Server1
Server2

Install the Windows PowerShell Desired State Configuration Service.

Server1
Server2

QUESTION 5

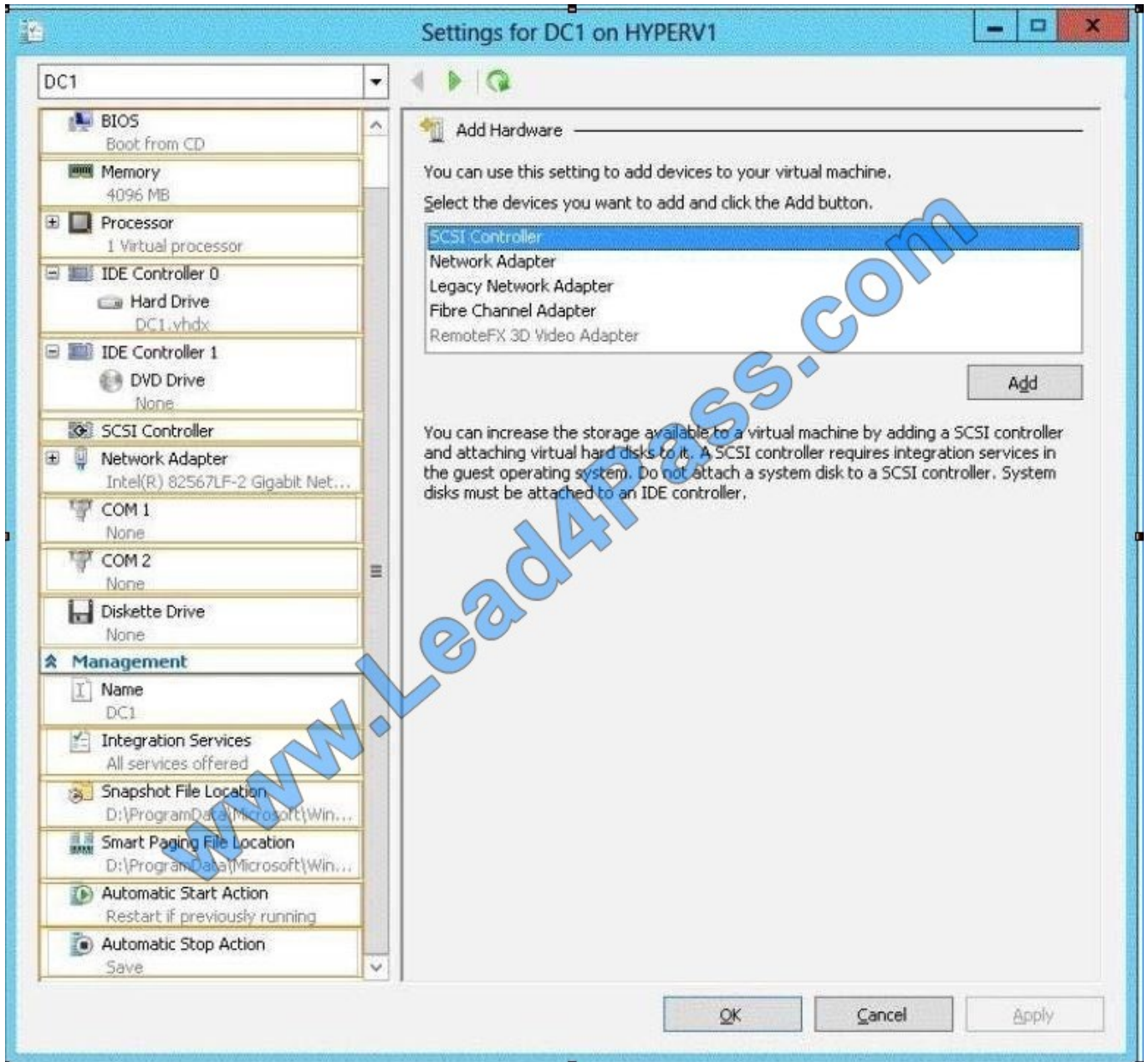
Your network contains an Active Directory domain named contoso.com. The domain contains a member server named Hyperv1 and a domain controller named DC1. Hyperv1 has the Hyper-V server role installed. DC1 is a virtual machine on

Hyperv1. Users report that the time on their client computer is incorrect. You log on to DC1 and verify that the time services are configured correctly. You need to prevent time conflicts between the time provided by DC1 and other potential

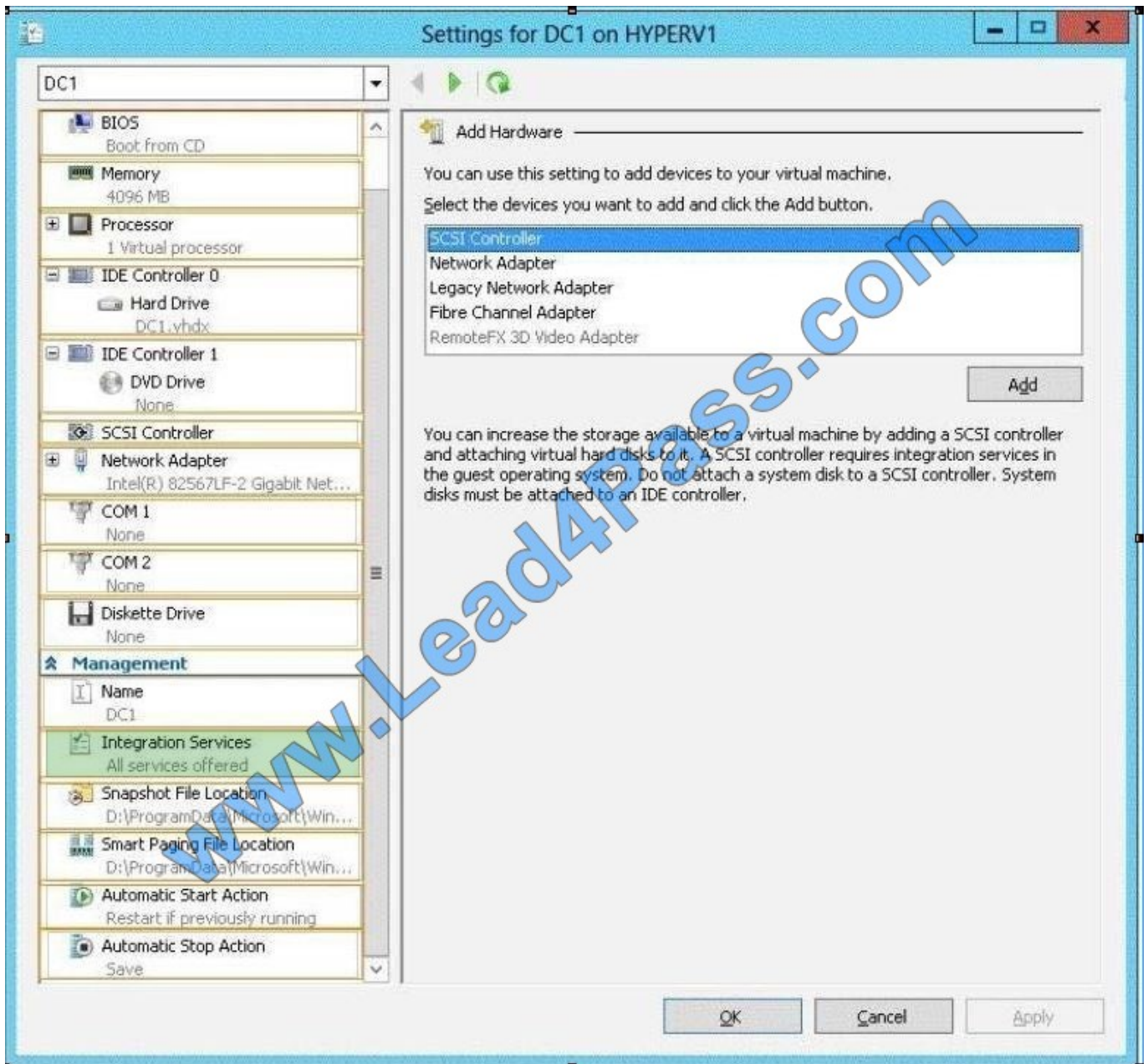
time sources.

What should you configure? To answer, select the appropriate object in the answer area.

Hot Area:



Correct Answer:



Hyper-V integration services are updated with a new service that allows Hyper-V administrators to copy files to the virtual machine while the virtual machine is running without using a network connection.

In previous versions of Hyper-V, a Hyper-V administrator may have needed to shut down a virtual machine to copy files to it. A new Hyper-V integration service has been added that allows the Hyper-V administrator to copy files to a running virtual machine without using a network connection. This will eliminate time conflicts.

Reference: <http://technet.microsoft.com/en-us/library/dn282278.aspx>

[Latest 70-410 Dumps](#)

[70-410 PDF Dumps](#)

[70-410 Practice Test](#)



To Read the [Whole Q&As](#), please purchase the [Complete Version](#) from [Our website](#).

Try our product !

100% Guaranteed Success

100% Money Back Guarantee

365 Days Free Update

Instant Download After Purchase

24x7 Customer Support

Average 99.9% Success Rate

More than 800,000 Satisfied Customers Worldwide

Multi-Platform capabilities - [Windows](#), [Mac](#), [Android](#), [iPhone](#), [iPod](#), [iPad](#), [Kindle](#)

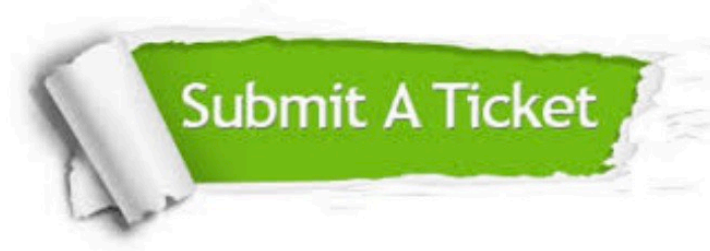
We provide exam PDF and VCE of Cisco, Microsoft, IBM, CompTIA, Oracle and other IT Certifications. You can view Vendor list of All Certification Exams offered:

<https://www.lead4pass.com/allproducts>

Need Help

Please provide as much detail as possible so we can best assist you.

To update a previously submitted ticket:



 <p>One Year Free Update Free update is available within One Year after your purchase. After One Year, you will get 50% discounts for updating. And we are proud to boast a 24/7 efficient Customer Support system via Email.</p>	 <p>Money Back Guarantee To ensure that you are spending on quality products, we provide 100% money back guarantee for 30 days from the date of purchase.</p>	 <p>Security & Privacy We respect customer privacy. We use McAfee's security service to provide you with utmost security for your personal information & peace of mind.</p>
---	---	--

Any charges made through this site will appear as Global Simulators Limited.

All trademarks are the property of their respective owners.

Copyright © lead4pass, All Rights Reserved.