



70-412^{Q&As}

Configuring Advanced Windows Server 2012 Services

Pass Microsoft 70-412 Exam with 100% Guarantee

Free Download Real Questions & Answers **PDF** and **VCE** file from:

<https://www.lead4pass.com/70-412.html>

100% Passing Guarantee
100% Money Back Assurance

Following Questions and Answers are all new published by Microsoft
Official Exam Center

-  **Instant Download** After Purchase
-  **100% Money Back** Guarantee
-  **365 Days** Free Update
-  **800,000+** Satisfied Customers





QUESTION 1

You are employee as a network administrator at abc.com. ABC.com has an active directory domain named ABC.com All servers on the abc.com network have Windows Server 2012 R2 installed and all workstations have windows 8 enterprise installed. ABC.com has established a remote Active directory site that only host workstations. The Computer accounts for these workstations have been placed in an organizational unit (OU), named ABCAD Remote, which has a group policy object (GPO) associated with it.

You are in the process of configuration Branchcchce for the remote Active directory site.

You have Already turned Branchcache on.

Which of the following actions should you take next_?

- A. You Should consider having the set Branchcache HostedServer Cache mode setting configured.
- B. You Should consider having the set Branchcache Hostedclient Cache mode setting configured
- C. You Should consider having the set Branchcache distributed cache mode setting configured
- D. You should consider having the set BranchCache disabled cache mode settings configured

Correct Answer: C

QUESTION 2

Your network contains an Active Directory domain named contoso.com. The domain contains four member servers named Server1, Server2, Server3, and Server4. Server1 and Server2 run Windows Server 2008 R2.

Server1 and Server2 have the Hyper-V server role and the Failover Clustering feature installed. Failover

Clustering is configured to provide highly available virtual machines by using a cluster named Cluster1.

Cluster1 hosts 10 virtual machines.

Server3 and Server4 run Windows Server 2012 R2.

You install the Hyper-V server role and the Failover Clustering feature on Server3 and Server4. You create a cluster named Cluster2.

You need to migrate cluster resources from Cluster1 to Cluster2. The solution must minimize downtime on the virtual machines.

Which five actions should you perform?

To answer, move the appropriate five actions from the list of actions to the answer area and arrange them in the correct order.

Select and Place:



Actions	Answer Area
From Failover Cluster Manager in Cluster1, run the Migrate a Cluster Wizard.	
From Failover Cluster Manager in Cluster2, run the Migrate a Cluster Wizard.	
Unmask the shared storage to present the storage to Cluster 2.	
Shut down all of the virtual machines in Cluster2.	
Mask the shared storage to prevent the storage from being accessed by Cluster1.	
Start the virtual machines in Cluster2.	
Start the virtual machines in Cluster1.	
Shut down all of the virtual machines in Cluster1.	

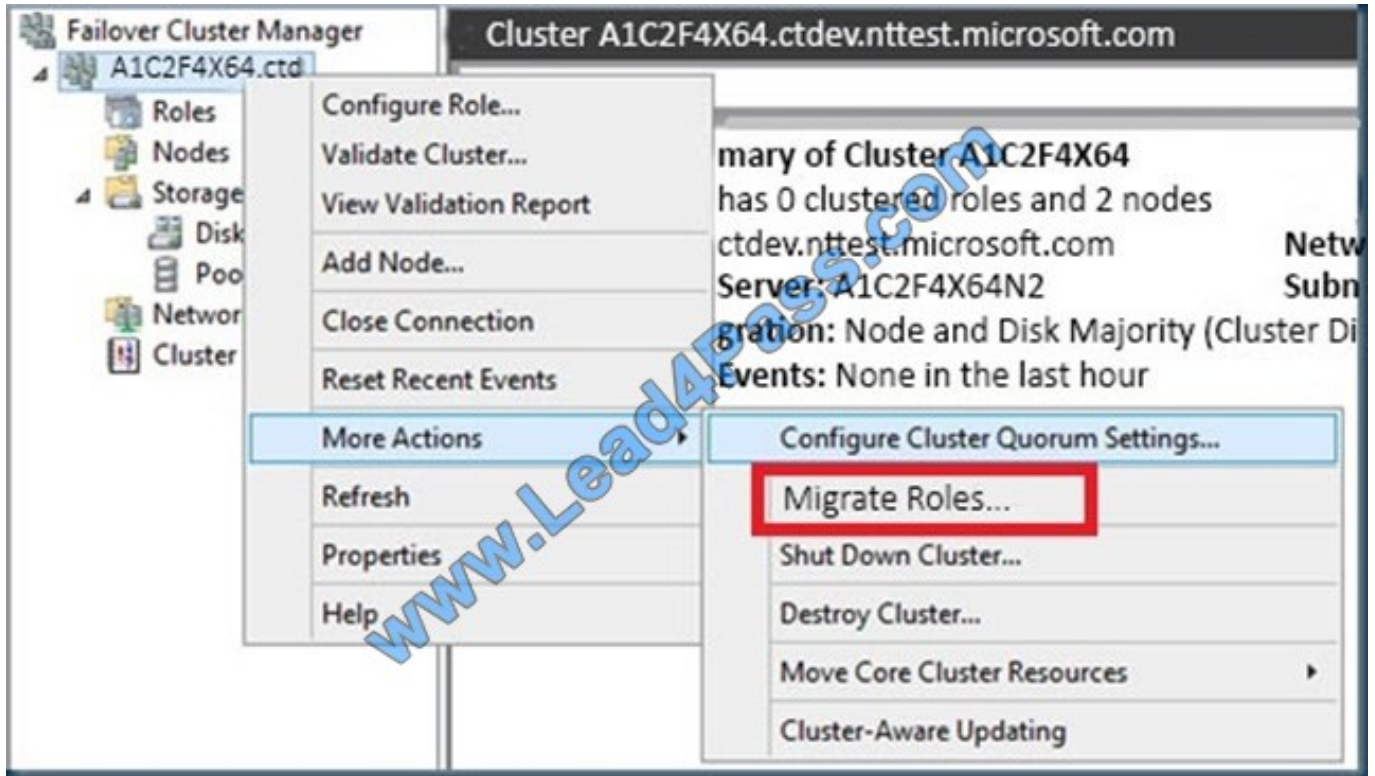
Correct Answer:

Actions	Answer Area
From Failover Cluster Manager in Cluster1, run the Migrate a Cluster Wizard.	From Failover Cluster Manager in Cluster2, run the Migrate a Cluster Wizard.
	Shut down all of the virtual machines in Cluster1.
	Mask the shared storage to prevent the storage from being accessed by Cluster1.
Shut down all of the virtual machines in Cluster2.	Unmask the shared storage to present the storage to Cluster 2.
	Start the virtual machines in Cluster2.
Start the virtual machines in Cluster1.	



1. Move Highly Available (Clustered) VMs to Windows Server 2012 with the Cluster Migration Wizard

On the Windows Server 2012 cluster – the target cluster - from the Failover Cluster Manager, select a cluster and then use the More Actions | Migrate Roles... menu to launch the Cluster Migration Wizard:



2. Shutdown all VMs on the source Windows Server 2008 R2 cluster that have been migrated.

3. Unmask the common shared storage (LUNs) so that they are not presented to the Windows Server 2008 R2 source cluster

4. Mask the common

shared storage (LUNs) to the Windows Server 2012 target cluster.

5. Start all VMs on the target Windows Server 2012 cluster.

Reference: Best practices for migration of cluster windows 2008 R2 / 2012

<http://blogs.technet.com/b/hugofe/archive/2012/12/06/best-practices-for-migration-of-cluster-windows-2008-r2-2012-as-melhores-praticas-para-migrar-um-cluster-de-windows-2008-para-windows-2012.aspx>

QUESTION 3

You have a server named Server1 that runs Windows Server 2012 R2.

You are configuring a storage space on Server1.



You need to ensure that the storage space supports tiered storage.

Which settings should you configure?

To answer, select the appropriate options in the answer area.

Hot Area:

Answer Area

Disk allocation:

Automatic	<input type="checkbox"/>
Hot Spare	<input type="checkbox"/>
Manual	<input type="checkbox"/>

Volume provisioning type:

Fixed	<input type="checkbox"/>
Thin	<input type="checkbox"/>

Correct Answer:

Answer Area

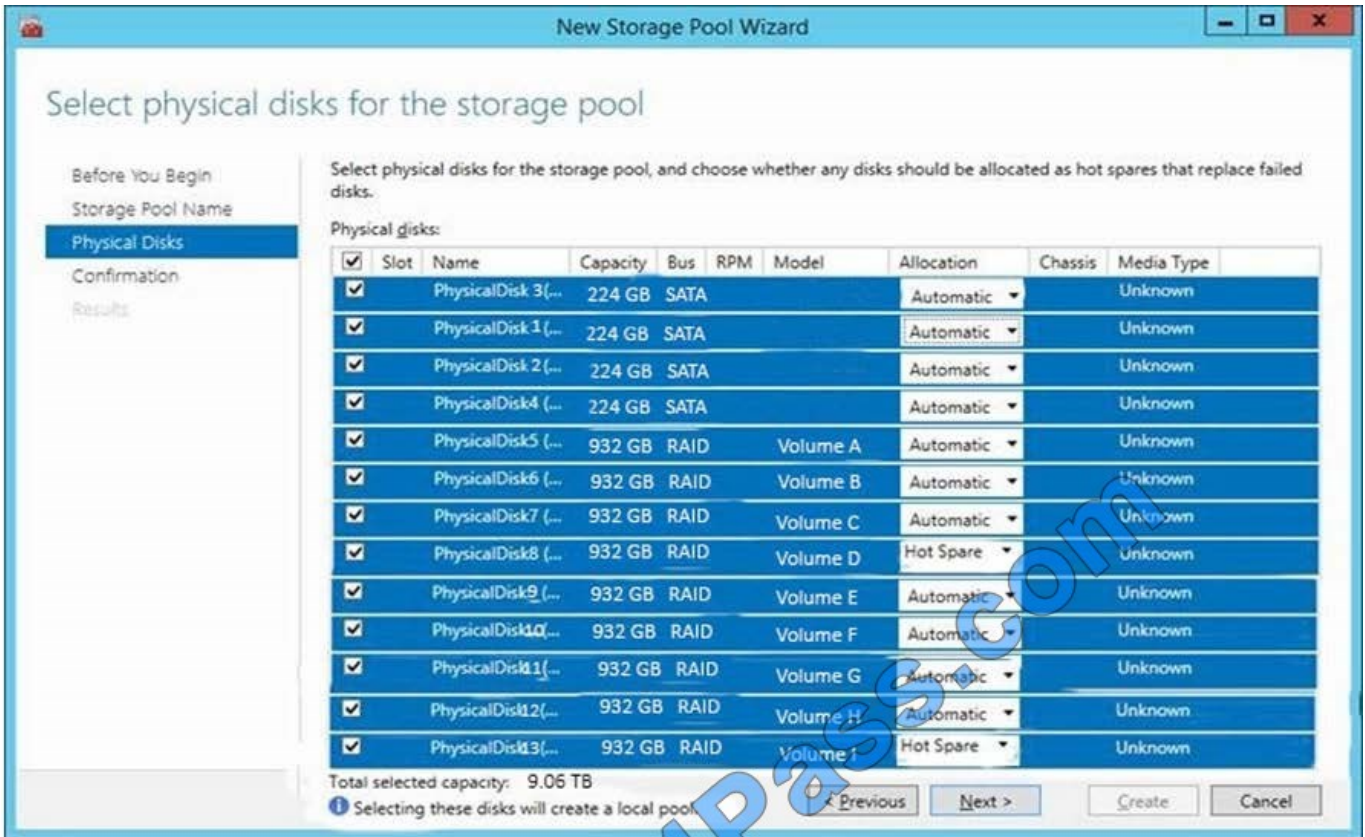
Disk allocation:

Automatic	<input checked="" type="checkbox"/>
Hot Spare	<input type="checkbox"/>
Manual	<input type="checkbox"/>

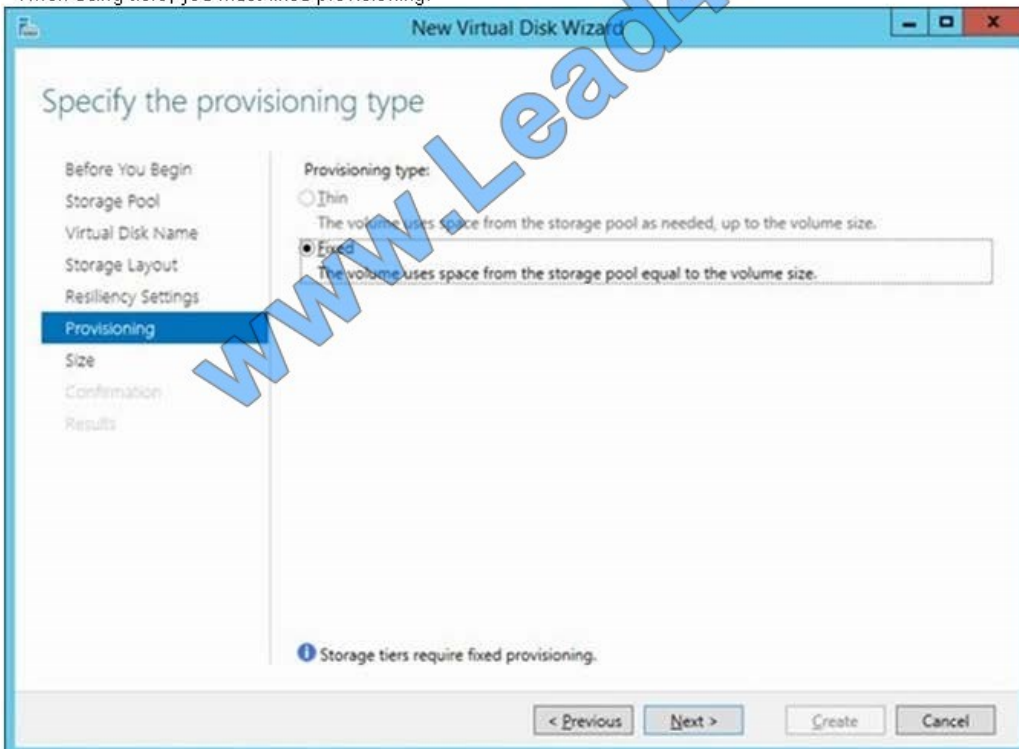
Volume provisioning type:

Fixed	<input checked="" type="checkbox"/>
Thin	<input type="checkbox"/>

Disk Allocation: Automatic



* When using tiers, you must fixed provisioning.



Reference: Storage Spaces: How to configure Storage Tiers with Windows Server 2012 R2

QUESTION 24
HOTSPOT

* When using tiers, you must fixed provisioning.



Reference: Storage Spaces: How to configure Storage Tiers with Windows Server 2012 R2

QUESTION 4

Your network contains an Active Directory forest named contoso.com. The forest contains two domains named contoso.com and child.contoso.com. The domains contain three domain controllers. The domain controllers are configured as shown in the following table.

Domain controller name	Operating system	Configuration
dc1.contoso.com	Windows Server 2008 R2 Service pack 1 (SP1)	Schema master Domain naming master
dc10.child1.contoso.com	Windows Server 2012 R2	PDC emulation
dc11.child1.contoso.com	Windows Server 2008 R2 Service Pack 1 (SP1)	RID master

You need to ensure that KDC support for claims, compound authentication, and Kerberos armoring setting is enforced in both domains. Which two actions should you perform? Each correct answer presents part of the solution. (Choose two.)

- A. Raise the domain functional level of child1.contoso.com.
- B. Raise the forest functional level of contoso.com.
- C. Upgrade DC11 to Windows Server 2012 R2.
- D. Upgrade DC1 to Windows Server 2012 R2.
- E. Raise the domain functional level of contoso.com.

Correct Answer: DE

References: [https://docs.microsoft.com/en-us/previous-versions/windows/it-pro/windows-server-2012-R2-and-2012/hh831747\(v=ws.11\)#BKMK_Sup4ClaimsCAarmoring](https://docs.microsoft.com/en-us/previous-versions/windows/it-pro/windows-server-2012-R2-and-2012/hh831747(v=ws.11)#BKMK_Sup4ClaimsCAarmoring)

QUESTION 5

Your network contains an Active Directory forest. The forest contains two domains named contoso.com and fabrikam.com. The functional level of the forest is Windows Server 2003.

You have an Active Directory domain outside the forest named adatum.com.

You need to configure an access solution to meet the following requirements:

Users in fabrikam.com must be able to access resources in adatum.com.

Users in contoso.com must be prevented from accessing resources in adatum.com.

Users in adatum.com must be prevented from accessing resources in both fabrikam.com and contoso.com



What should you create?

- A. a one-way external trust from fabrikam.com to adatum.com
- B. a one-way realm trust from adatum.com to fabrikam.com
- C. a one-way realm trust from fabrikam.com to adatum.com
- D. a one-way external trust from adatum.com to fabrikam.com

Correct Answer: D

References: <https://www.microsoftpressstore.com/articles/article.aspx?p=2217267andseqNum=3>

[Latest 70-412 Dumps](#)

[70-412 Exam Questions](#)

[70-412 Braindumps](#)



To Read the [Whole Q&As](#), please purchase the [Complete Version](#) from [Our website](#).

Try our product !

100% Guaranteed Success

100% Money Back Guarantee

365 Days Free Update

Instant Download After Purchase

24x7 Customer Support

Average 99.9% Success Rate

More than 800,000 Satisfied Customers Worldwide

Multi-Platform capabilities - [Windows](#), [Mac](#), [Android](#), [iPhone](#), [iPod](#), [iPad](#), [Kindle](#)

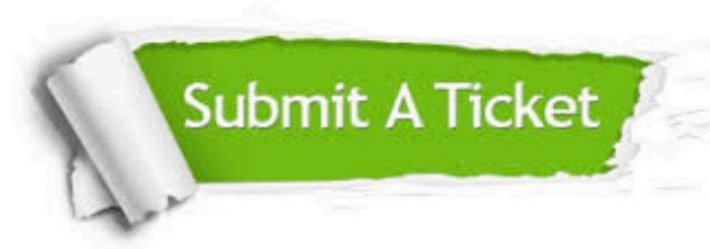
We provide exam PDF and VCE of Cisco, Microsoft, IBM, CompTIA, Oracle and other IT Certifications. You can view Vendor list of All Certification Exams offered:

<https://www.lead4pass.com/allproducts>

Need Help

Please provide as much detail as possible so we can best assist you.

To update a previously submitted ticket:



 <p>One Year Free Update Free update is available within One Year after your purchase. After One Year, you will get 50% discounts for updating. And we are proud to boast a 24/7 efficient Customer Support system via Email.</p>	 <p>Money Back Guarantee To ensure that you are spending on quality products, we provide 100% money back guarantee for 30 days from the date of purchase.</p>	 <p>Security & Privacy We respect customer privacy. We use McAfee's security service to provide you with utmost security for your personal information & peace of mind.</p>
---	---	--

Any charges made through this site will appear as Global Simulators Limited.

All trademarks are the property of their respective owners.

Copyright © lead4pass, All Rights Reserved.