



# 70-412<sup>Q&As</sup>

Configuring Advanced Windows Server 2012 Services

## Pass Microsoft 70-412 Exam with 100% Guarantee

Free Download Real Questions & Answers **PDF** and **VCE** file from:

<https://www.lead4pass.com/70-412.html>

100% Passing Guarantee  
100% Money Back Assurance

Following Questions and Answers are all new published by Microsoft  
Official Exam Center

-  **Instant Download** After Purchase
-  **100% Money Back** Guarantee
-  **365 Days** Free Update
-  **800,000+** Satisfied Customers



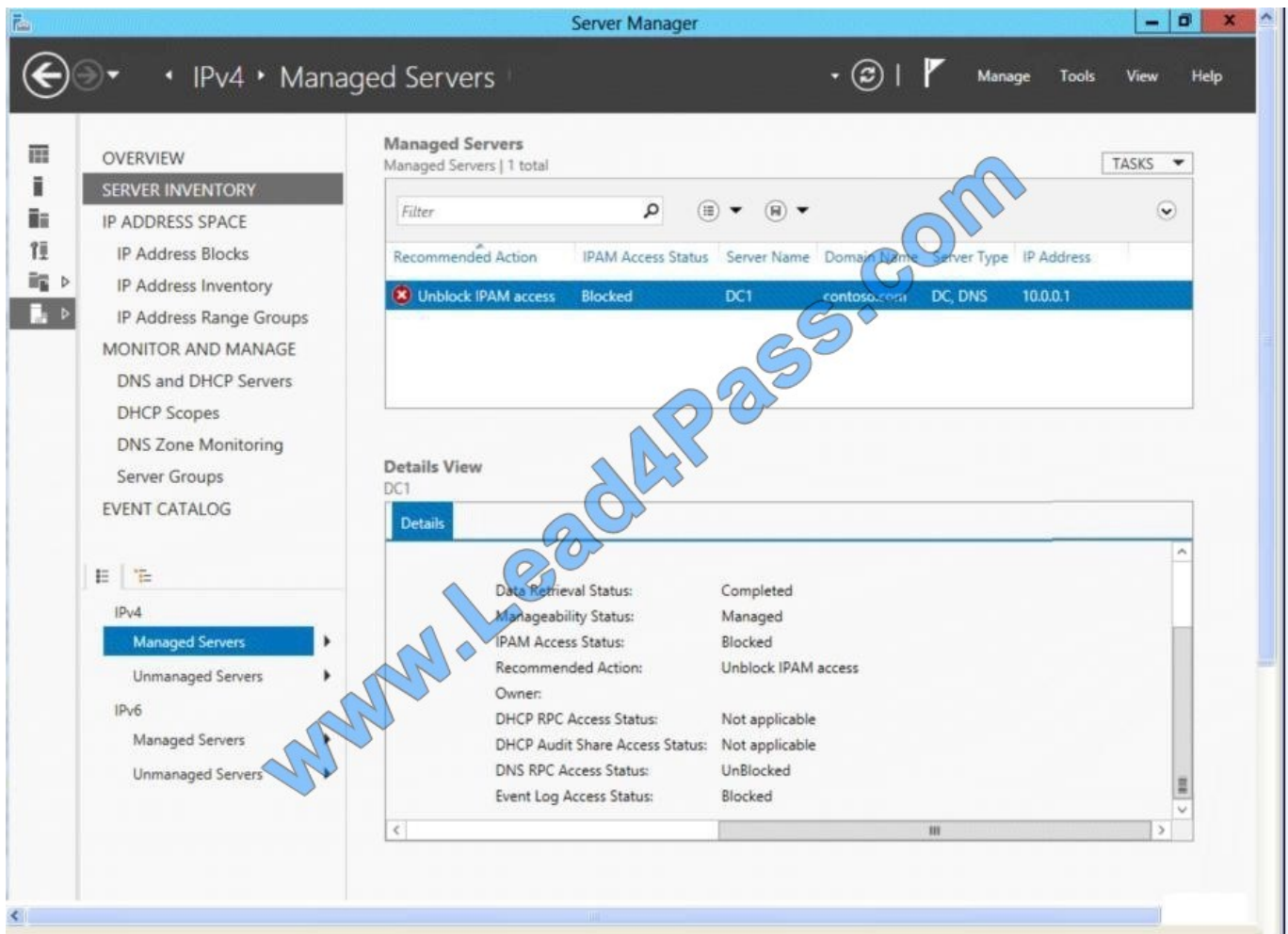


### QUESTION 1

Your network contains an Active Directory domain named contoso.com. The domain contains a domain controller named DC1 and a member server named Server1. Server1 has the IP Address Management (IPAM) Server feature installed.

On Dc1, you configure Windows Firewall to allow all of the necessary inbound ports for IPAM.

On Server1, you open Server Manager as shown in the exhibit. (Click the Exhibit button.)



You need to ensure that you can use IPAM on Server1 to manage DNS on DC1. What should you do?

- A. Modify the outbound firewall rules on Server1.
- B. Modify the inbound firewall rules on Server1.
- C. Add Server1 to the Remote Management Users group.
- D. Add Server1 to the Event Log Readers group.

Correct Answer: D

To access configuration data and server event logs, the IPAM server must be a member of the domain IPAM Users



Group (IPAMUG). The IPAM server must also be a member of the Event Log Readers security group.

Note: The computer account of the IPAM server must be a member of the Event Log Readers security group.

Reference: Manually Configure DC and NPS Access Settings. <http://technet.microsoft.com/en-us/library/jj878317.aspx>  
<http://technet.microsoft.com/en-us/library/jj878313.aspx>

## QUESTION 2

Your network contains an Active Directory forest named adatum.com. The forest contains one domain. The forest contains three sites named Site1, Site2, Site3, and Site4. The site links are shown in the following output.

```
Cost : 10
DistinguishedName : CN=S1-S2,CN=IP,CN=Inter-Site Transports,CN=Sites,CN=Configuration,DC=Adatum,DC=com
Name : S1-S2
ObjectClass : siteLink
ObjectGUID : dcl1a7b85-9260-4b58-a252-c42745c166652
ReplicationFrequencyInMinutes : 15
SitesIncluded : {CN=Site2,CN=Sites,CN=Configuration,DC=Adatum,DC=com,
                CN=Site1,CN=Sites,CN=Configuration,DC=Adatum,DC=com}

Cost : 80
DistinguishedName : CN=S1-S4,CN=IP,CN=Inter-Site Transports,CN=Sites,CN=Configuration,DC=Adatum,DC=com
Name : S1-S4
ObjectClass : siteLink
ObjectGUID : 1950750f-2c-90-40ed-8aec-923370dc9c45
ReplicationFrequencyInMinutes : 15
SitesIncluded : {CN=Site4,CN=Sites,CN=Configuration,DC=Adatum,DC=com,
                CN=Site1,CN=Sites,CN=Configuration,DC=Adatum,DC=com}

Cost : 20
DistinguishedName : CN=S2-S3,CN=IP,CN=Inter-Site transports,CN=Sites,CN=Configuration,DC=Adatum,DC=com
Name : S2-S3
ObjectClass : siteLink
ObjectGUID : bf6e7df6-e2e5-4dfd-9eab-2b8f76acb96c
ReplicationFrequencyInMinutes : 30
SitesIncluded : {CN=Site3,CN=Sites,CN=Configuration,DC=Adatum,DC=com,
                CN=Site2,CN=Sites,CN=Configuration,DC=Adatum,DC=com}

Cost : 30
DistinguishedName : CN=S3-S4,CN=IP,CN=Inter-Site Transports,CN=Sites,CN=Configuration,DC=Adatum,DC=com
Name : S3-S4
ObjectClass : siteLink
ObjectGUID : e06d59d9-6057-46bd-8c05-dbfa273bb938
ReplicationFrequencyInMinutes : 45
SitesIncluded : {CN=Site4,CN=Sites,CN=Configuration,DC=Adatum,DC=com,
```

In Site1, you create a user named User1.

What is the minimum number of minutes required for User1 to replicate to a domain controller in Site4?

- A. 90
- B. 45
- C. 105



D. 15

Correct Answer: B

---

### QUESTION 3

Your network contains an Active Directory domain named contoso.com.

A previous administrator implemented a Proof of Concept installation of Active Directory Rights Management Services (AD RMS) on a server named Server1.

After the proof of concept was complete, the Active Directory Rights Management Services server role was removed.

You attempt to deploy AD RMS.

During the configuration of AD RMS, you receive an error message indicating that an existing AD RMS Service Connection Point (SCP) was found.

You need to ensure that clients will only attempt to establish connections to the new AD RMS deployment.

Which should you do?

- A. From DNS, remove the records for Server1.
- B. From DNS, increase the priority of the DNS records for the new deployment of AD RMS.
- C. From Active Directory, remove the computer object for Server1.
- D. From Active Directory, remove the SCP.

Correct Answer: D

The Active Directory Rights Management Services (AD RMS) Service Connection Point (SCP) is an object in Active Directory that holds the web address of the AD RMS certification cluster. AD RMS-enabled applications use the SCP to discover the AD RMS service; it is the first connection point for users to discover the AD RMS web services.

Only one SCP can exist in your Active Directory forest. If you try to install AD RMS and an SCP already exists in your forest from a previous AD RMS installation that was not properly deprovisioned, the new SCP will not install properly. It must be removed before you can establish the new SCP. Reference: The AD RMS Service Connection Point <http://social.technet.microsoft.com/wiki/contents/articles/710.the-ad-rms-service-connection-point.aspx>

---

### QUESTION 4

Your company has offices in Montreal, New York, and Amsterdam.

The network contains an Active Directory forest named contoso.com. An Active Directory site exists for each office. All of the sites connect to each other by using the DEFAULTIPSITELINK site link.

You need to ensure that only between 20:00 and 08:00, the domain controllers in the Montreal office replicate the Active Directory changes to the domain controllers in the Amsterdam office.

The solution must ensure that the domain controllers in the Montreal and the New York offices can replicate the Active Directory changes any time of day.



What should you do?

- A. Create a new site link that contains Montreal and Amsterdam. Remove Amsterdam from DEFAULTIPSITE1INK. Modify the schedule of DEFAULTIPSITELINK.
- B. Create a new site link that contains Montreal and Amsterdam. Create a new site link bridge. Modify the schedule of DEFAULTIPSITELINK.
- C. Create a new site link that contains Montreal and Amsterdam. Remove Amsterdam from DEFAULTIPSITELINK. Modify the schedule of the new site link.
- D. Create a new site link that contains Montreal and Amsterdam. Create a new site link bridge. Modify the schedule of the new site link.

Correct Answer: C

We create a new site link between Montreal and Amsterdam and schedule it only between 20:00 and

08:00. To ensure that traffic between Montreal and Amsterdam only occurs at this time we also remove Amsterdam from the DEFAULTIPSITELINK. Reference: How Active Directory Replication Topology Works [http://technet.microsoft.com/en-us/library/cc755994\(v=ws.10\).aspx](http://technet.microsoft.com/en-us/library/cc755994(v=ws.10).aspx)

#### QUESTION 5

Your network contains one Active Directory forest named contoso.com and one Active Directory forest named adatum.com. Each forest contains a single domain. You have the domain controllers configured as shown in the following table.

Name	Domain	Site	Global catalog
DC1	Contoso.com	Site1	Yes
DC2	Contoso.com	Site2	No
DC3	Adatum.com	Site2	Yes
DC4	Adatum.com	Site1	No

You perform the following three actions:

Create a user named User1 on DC3.

Create a file named File1.txt in the SYSVOL folder on DC1.

Create a Group Policy object (GPO) named GPO1 on DC1 and link GPO1 to Site2.

You need to identify on which domain controller or controllers each object is stored. What should you identify? To answer, select the appropriate options in the answer area.

Hot Area:



Answer Area

Domain controller	File1.txt	User1	GPO1
DC1	<input type="checkbox"/>	<input type="checkbox"/>	<input type="checkbox"/>
DC2	<input type="checkbox"/>	<input type="checkbox"/>	<input type="checkbox"/>
DC3	<input type="checkbox"/>	<input type="checkbox"/>	<input type="checkbox"/>
DC4	<input type="checkbox"/>	<input type="checkbox"/>	<input type="checkbox"/>

Correct Answer:

Answer Area

Domain controller	File1.txt	User1	GPO1
DC1	<input checked="" type="checkbox"/>	<input checked="" type="checkbox"/>	<input checked="" type="checkbox"/>
DC2	<input checked="" type="checkbox"/>	<input type="checkbox"/>	<input type="checkbox"/>
DC3	<input type="checkbox"/>	<input checked="" type="checkbox"/>	<input checked="" type="checkbox"/>
DC4	<input type="checkbox"/>	<input checked="" type="checkbox"/>	<input type="checkbox"/>

\* SYSVOL is simply a folder which resides on each and every domain controller within the domain. It contains the domains public files that need to be accessed by clients and kept synchronised between domain controllers. Here File1.txt will be stored on both domain controllers in contoso.com (DC1 and DC2).

\* User1 will be stored on both domain controllers in adatum.com (DC3 and DC4), and on the global catalog server in contoso.com (DC1).

\* The global catalog is the set of all objects in an Active Directory Domain Services (AD DS) forest. A global catalog server is a domain controller that stores a full copy of all objects in the directory for its host domain and a partial, read-only copy of all objects for all other domains in the forest. Global catalog servers respond to global catalog queries. GPO1 will be stored on the global catalog servers in the forest (Dc1 and DC3) Reference: Understanding the Global Catalog <https://technet.microsoft.com/en-us/library/cc730749.aspx>





To Read the [Whole Q&As](#), please purchase the [Complete Version](#) from [Our website](#).

## Try our product !

100% Guaranteed Success

100% Money Back Guarantee

365 Days Free Update

Instant Download After Purchase

24x7 Customer Support

Average 99.9% Success Rate

More than 800,000 Satisfied Customers Worldwide

Multi-Platform capabilities - [Windows](#), [Mac](#), [Android](#), [iPhone](#), [iPod](#), [iPad](#), [Kindle](#)

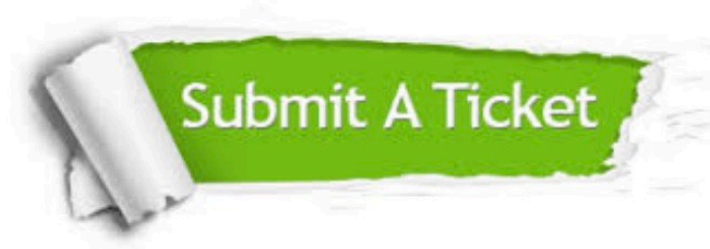
We provide exam PDF and VCE of Cisco, Microsoft, IBM, CompTIA, Oracle and other IT Certifications. You can view Vendor list of All Certification Exams offered:

<https://www.lead4pass.com/allproducts>

## Need Help

Please provide as much detail as possible so we can best assist you.

To update a previously submitted ticket:



 <p><b>One Year Free Update</b> Free update is available within One Year after your purchase. After One Year, you will get 50% discounts for updating. And we are proud to boast a 24/7 efficient Customer Support system via Email.</p>	 <p><b>Money Back Guarantee</b> To ensure that you are spending on quality products, we provide 100% money back guarantee for 30 days from the date of purchase.</p>	 <p><b>Security &amp; Privacy</b> We respect customer privacy. We use McAfee's security service to provide you with utmost security for your personal information &amp; peace of mind.</p>
---	---	--

Any charges made through this site will appear as Global Simulators Limited.

All trademarks are the property of their respective owners.

Copyright © lead4pass, All Rights Reserved.