



70-417^{Q&As}

Upgrading Your Skills to MCSA Windows Server 2012

Pass Microsoft 70-417 Exam with 100% Guarantee

Free Download Real Questions & Answers **PDF** and **VCE** file from:

<https://www.lead4pass.com/70-417.html>

100% Passing Guarantee
100% Money Back Assurance

Following Questions and Answers are all new published by Microsoft
Official Exam Center

-  **Instant Download** After Purchase
-  **100% Money Back** Guarantee
-  **365 Days** Free Update
-  **800,000+** Satisfied Customers





QUESTION 1

HOTSPOT

Your network contains an Active Directory domain named adatum.com. The domain contains a server named Server1.

Your company implements DirectAccess.

A user named User1 works at a customer's office. The customer's office contains a server named Server1.

When User1 attempts to connect to Server1, User1 connects to Server1 in adatum.com.

You need to provide User1 with the ability to connect to Server1 in the customer's office.

Which Group Policy option should you configure?

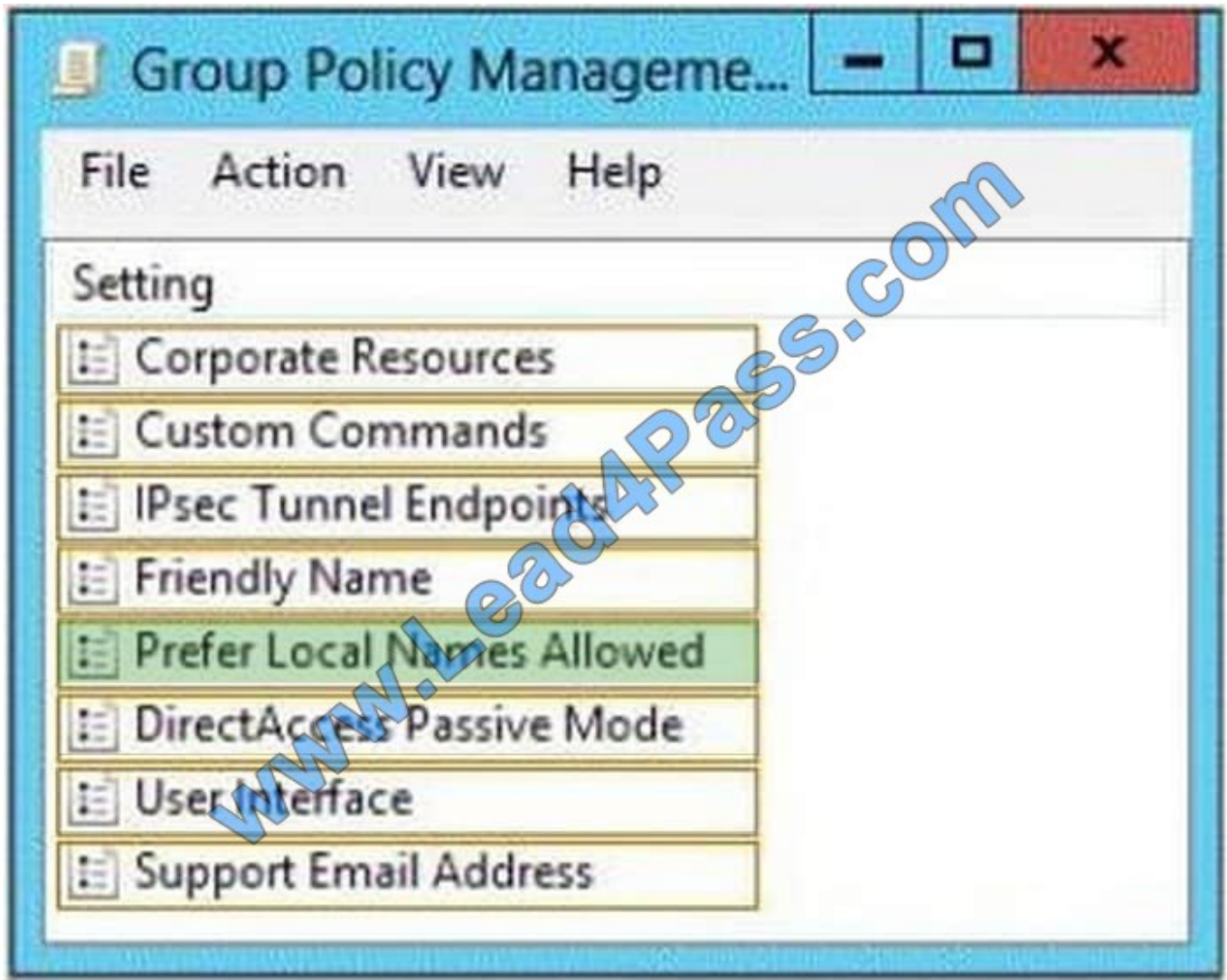
To answer, select the appropriate option in the answer area.

Hot Area:





Correct Answer:



Explanation:

By selecting the Prefer local DNS names option, you disable name resolution through corporate network DNS servers and use whatever normal name resolution is available to your client computers. This enables you to access computers like your Windows Home Server by name, but it prevents you from accessing any corporate resources by name.

Note: When you are on a remote network that is using DirectAccess, all of the name queries from your computer that resolve friendly DNS names that match your organization's DNS name are sent to your corporate DNS name server. Short names are combined with your organization's DNS name. This enables short names for intranet resources such as `http://hrweb` or `\\public` to be accessible to you in your remote location. However, this has the effect of making resources on your locally connected network with the same name no longer available by their short name.

QUESTION 2

You have a Hyper-V host named Server1 that runs Windows Server 2012 R2. Server1 host 50 virtual machines that run Windows Server 2012 R2.



You enable and configure enhanced session mode on Server1. You need to identify a new functionality available for the virtual machines hosted on Server1.

What should you identify?

- A. Smart card authentication using virtual machine connections
- B. Redirection of RemoteFX USB drivers by using remote desktop connections
- C. Redirection of RemoteFX USB drivers using virtual machine connections
- D. Smart card authentication using the remote desktop client

Correct Answer: A

References: [https://docs.microsoft.com/en-us/previous-versions/windows/it-pro/windows-server-2012-R2-and-2012/dn282274\(v=ws.11\)](https://docs.microsoft.com/en-us/previous-versions/windows/it-pro/windows-server-2012-R2-and-2012/dn282274(v=ws.11))

QUESTION 3

You have a server named Server1 that runs Windows Server 2012 R2. Server1 is located in the perimeter network and has the DNS Server server role installed.

Server1 has a zone named contoso.com.

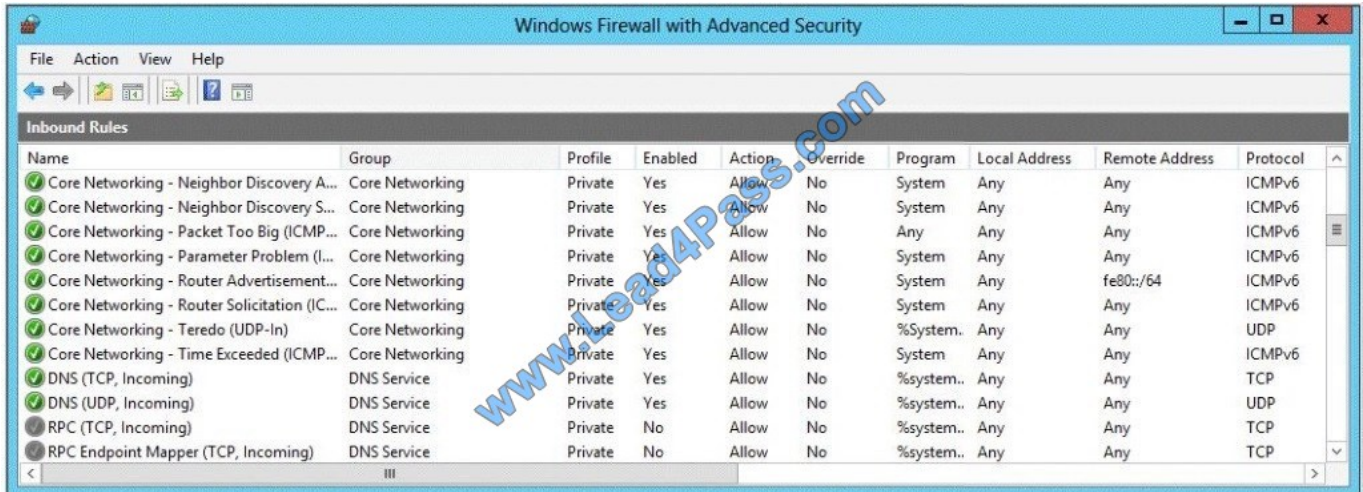
You apply a security template to Server1.

After you apply the template, users report that they can no longer resolve names from contoso.com.

On Server1, you open DNS Manager as shown in the DNS exhibit. (Click the Exhibit button.)



On Server1, you open Windows Firewall with Advanced Security as shown in the Firewall exhibit. (Click the Exhibit button.)



You need to ensure that users can resolve contoso.com names.

What should you do?

- A. From Windows Firewall with Advanced Security, disable the DNS (TCP, Incoming) rule and the DNS (UDP, Incoming) rule.
- B. From DNS Manager, modify the Zone Transfers settings of the contoso.com zone.
- C. From DNS Manager, unsign the contoso.com zone.
- D. From DNS Manager, modify the Start of Authority (SOA) of the contoso.com zone.
- E. From Windows Firewall with Advanced Security, modify the profiles of the DNS (TCP, Incoming) rule and the DNS (UDP, Incoming) rule.

Correct Answer: E

To configure Windows Firewall on a managed DNS server On the Server Manager menu, click Tools and then click Windows Firewall with Advanced Security.

Right-click Inbound Rules, and then click New Rule. The New Inbound Rule Wizard will launch.

In Rule Type, select Predefined, choose DNS Service from the list, and then click Next.

In Predefined Rules, under Rules, select the checkboxes next to the following rules: Click Next, choose Allow the connection, and then click Finish. Right- click Inbound Rules, and then click New Rule. The New Inbound Rule Wizard will

launch.etc.

QUESTION 4

Your network contains an Active Directory domain named adatum.com. The domain contains a member server named Host1. Host1 runs Windows Server 2012 R2 and has the Hyper-V server role installed.

Host1 hosts two virtual machines named VM5 and VM6. Both virtual machines connect to a virtual switch named Virtual1.



On VM5, you install a network monitoring application named Monitor1.

You need to capture all of the inbound and outbound traffic to VM6 by using Monitor1.

Which two commands should you run from Windows PowerShell? (Each correct answer presents part of the solution. Choose two.)

- A. Get-VM "VM6" | Set-VMNetworkAdapter-lovWeight 1
- B. Get-VM "VM5" | Set-VMNetworkAdapter -lovWeight 0
- C. Get-VM "VM6" | Set-VMNetworkAdapter -PortMirroring Source
- D. Get-VM "VM6" | Set-VMNetworkAdapter -AllowTeaming On
- E. Get-VM "VM5" | Set-VMNetworkAdapter -PortMirroring Destination
- F. Get-VM "VM5" | Set-VMNetworkAdapter -AllowTeaming On

Correct Answer: CE

PortMirroring specifies the port mirroring mode for the network adapter. This can be set to None, Source, and Destination.

If set to Source, a copy of every network packet it sends or receives is forwarded to a virtual network adapter configured to receive the packets.

If set to Destination, it receives copied packets from the source virtual network adapter.

In this scenario, VM5 is the destination which must receive a copy of the network packets from VM6, which is the source.

References:

<http://technet.microsoft.com/en-us/library/hh848457.aspx>

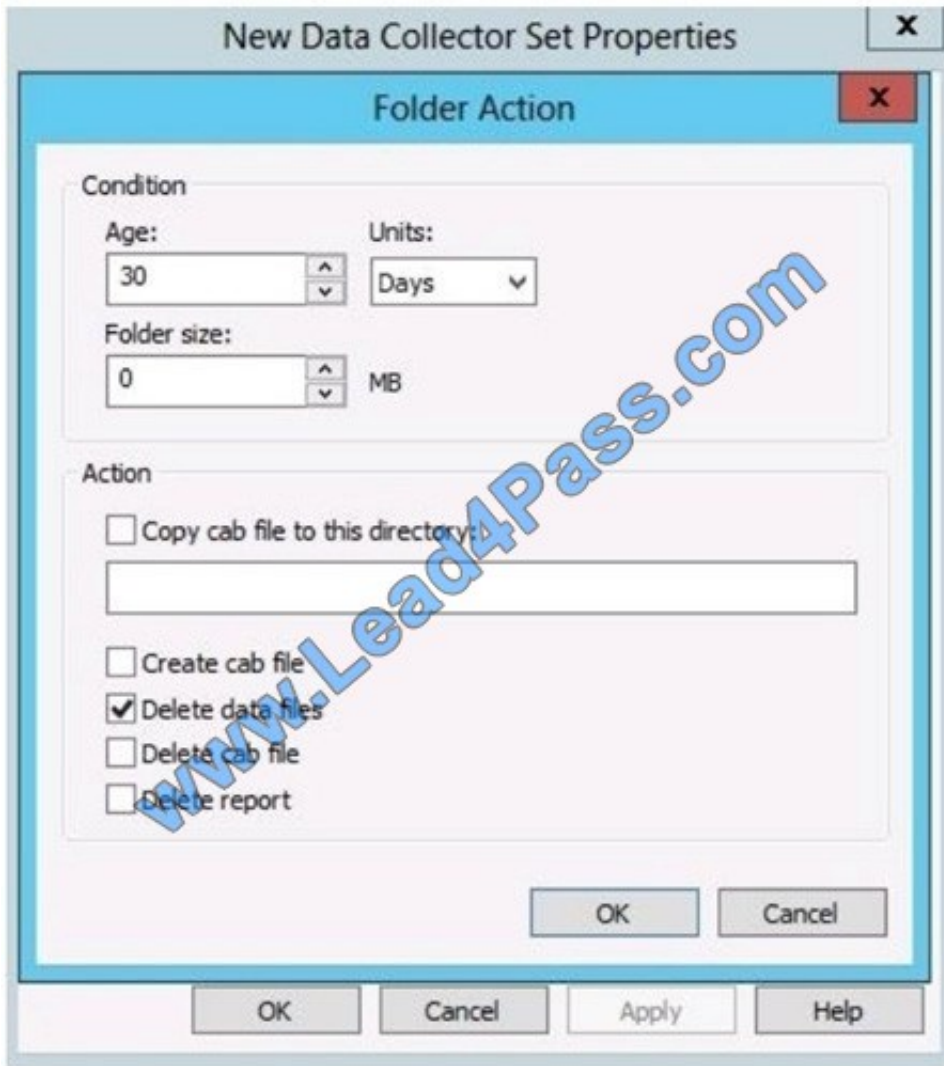
QUESTION 5

You have a server named Server1 that runs Windows Server 2012 R2. On Server1, you configure a custom Data Collector Set (DCS) named DCS1. You need to ensure that all performance log data that is older than 30 days is deleted automatically.

What should you configure?

- A. A File Server Resource Manager (FSRM) file screen on the %Systemdrive%\PerfLogs folder
- B. The Data Manager settings of DCS1
- C. A schedule for DCS1
- D. A File Server Resource Manager (FSRM) quota on the %Systemdrive%\PerfLogs folder

Correct Answer: B



[Latest 70-417 Dumps](#)

[70-417 PDF Dumps](#)

[70-417 Study Guide](#)



To Read the [Whole Q&As](#), please purchase the [Complete Version](#) from [Our website](#).

Try our product !

100% Guaranteed Success

100% Money Back Guarantee

365 Days Free Update

Instant Download After Purchase

24x7 Customer Support

Average 99.9% Success Rate

More than 800,000 Satisfied Customers Worldwide

Multi-Platform capabilities - [Windows](#), [Mac](#), [Android](#), [iPhone](#), [iPod](#), [iPad](#), [Kindle](#)

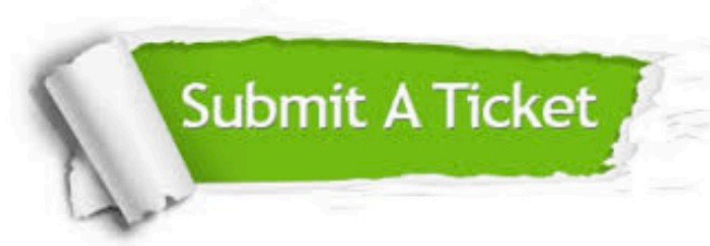
We provide exam PDF and VCE of Cisco, Microsoft, IBM, CompTIA, Oracle and other IT Certifications. You can view Vendor list of All Certification Exams offered:

<https://www.lead4pass.com/allproducts>

Need Help

Please provide as much detail as possible so we can best assist you.

To update a previously submitted ticket:



 <p>One Year Free Update Free update is available within One Year after your purchase. After One Year, you will get 50% discounts for updating. And we are proud to boast a 24/7 efficient Customer Support system via Email.</p>	 <p>Money Back Guarantee To ensure that you are spending on quality products, we provide 100% money back guarantee for 30 days from the date of purchase.</p>	 <p>Security & Privacy We respect customer privacy. We use McAfee's security service to provide you with utmost security for your personal information & peace of mind.</p>
---	---	--

Any charges made through this site will appear as Global Simulators Limited.

All trademarks are the property of their respective owners.

Copyright © lead4pass, All Rights Reserved.