

HP0-Y50^{Q&As}

Architecting HP FlexNetwork Solutions

Pass HP HP0-Y50 Exam with 100% Guarantee

Free Download Real Questions & Answers **PDF** and **VCE** file from:

<https://www.leads4pass.com/hp0-y50.html>

100% Passing Guarantee
100% Money Back Assurance

Following Questions and Answers are all new published by HP Official Exam Center

-  **Instant Download** After Purchase
-  **100% Money Back** Guarantee
-  **365 Days** Free Update
-  **800,000+** Satisfied Customers



QUESTION 1

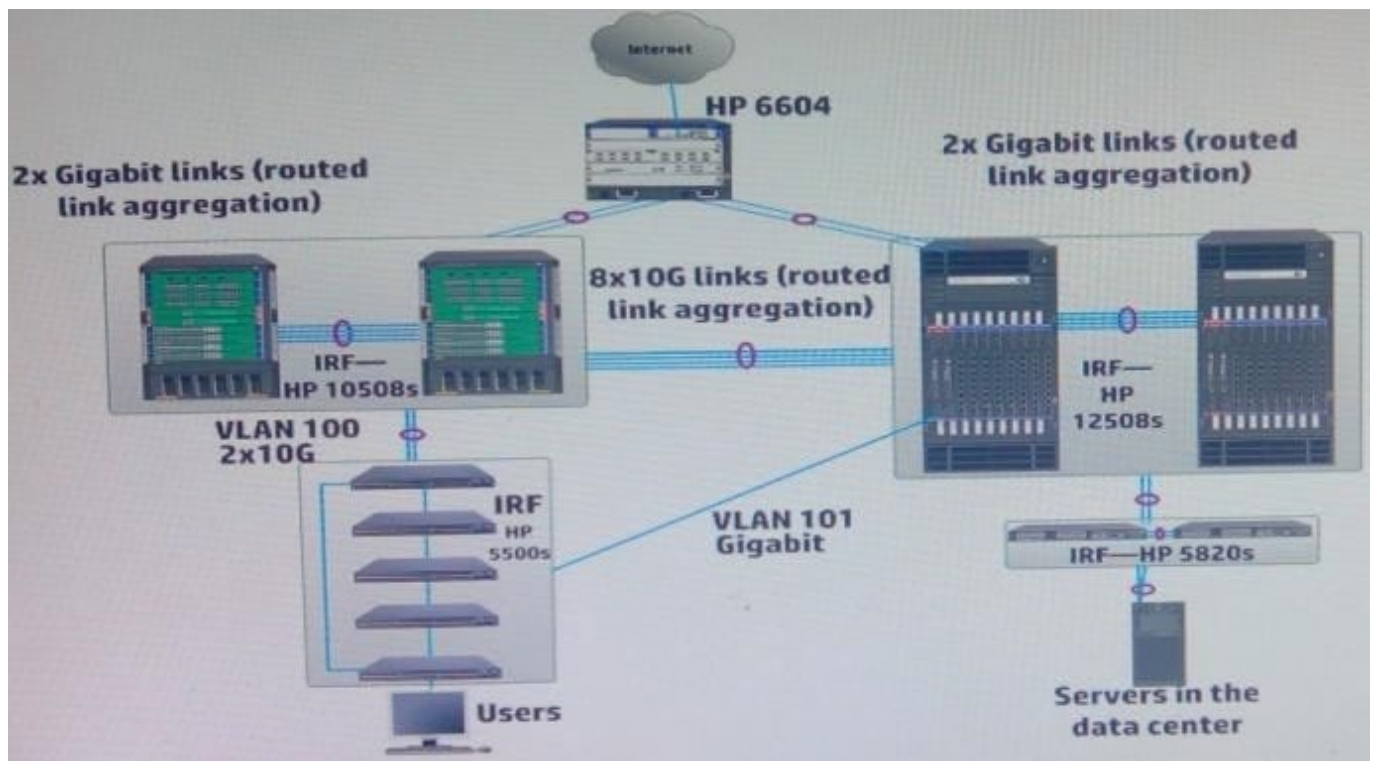
Organizations can deploy off-the-shelf, virtualized application on some HP infrastructure devices. Which devices support this capability? (Select two)

- A. HP MSR3000 Routers
- B. HP HSR6800 Routers
- C. HP 7500 Switches
- D. HP 11900 Switches
- E. HP 5400 zl Switches

Correct Answer: AE

QUESTION 2

Refer to the exhibit.



The exhibit shows the topology for an enterprise LAN with an on-site data center. The intelligent Resilient Framework (IRF) group of HP 5500 Series switches supports a group of computers that require very high availability to the data center. Therefore, the customer has requested a backup gigabit fiber link implement Open Shortest Path First (OSPF) in a single area.

Which tasks should the network architect complete to ensure that the HP 5500 IRF group selects the correct path to the data center during normal operation?

- A. Change the reference bandwidth on the VLAN 100 interfaces to 20000
- B. Set the cost on the VLAN 100 interfaces to 2 Set the cost for the VLAN 101 interfaces to
- C. Change the reference bandwidth on the VLAN 101 interfaces to 1000
- D. Change the VLAN 101 interfaces as silent interfaces
- E. Change the reference bandwidth to 80000 on all routing devices

Correct Answer: B

QUESTION 3

Which data center characteristics should specifically make the architect consider switches that support Shortest Path Bridging (SPB) or Transparent Interconnection of Lots of Links (TRILL)?

- A. The customer requires redundancy and resiliency for the two data center routing switches
- B. The customer requires high-speed routing between front-end servers and database servers in different subnets
- C. The virtualized data center supports several thousand virtual machines (VMs) with a two-tier networking infrastructure topology
- D. The data center requires many redundant links and must scale the tens of thousands of virtual (VMs)

Correct Answer: A

QUESTION 4

If a network architect is planning a secure device management policy, why would administrators need to generate SSH keys on network infrastructure devices?

- A. To authenticate managers with a more secure method than passwords
- B. To encrypt management traffic and also authenticate managers with asymmetric
- C. To authenticate managers and assign them privileges according to their identity
- D. To encrypt management traffic related to the CLI

Correct Answer: D

QUESTION 5

Network architect is recommending that a customer move from a three-tier campus LAN topology to a two-tier topology that routes traffic distribution layer provides firewall services and STP root guard. As a best practice, where should firewall services and STP root guard be important topology?

- A. These security features should be implemented at both the network access layer and the core.

- B. These security features should be implemented at the core.
- C. These security features should be implemented at the network access layer.
- D. Firewall services features should be implemented at the core, and STP root guard be implemented at the access layer

Correct Answer: C

[HP0-Y50 VCE Dumps](#)

[HP0-Y50 Practice Test](#)

[HP0-Y50 Braindumps](#)