

HP2-Z30^{Q&As}

Fast Track - Applying HP FlexNetwork Fundamentals

Pass HP HP2-Z30 Exam with 100% Guarantee

Free Download Real Questions & Answers **PDF** and **VCE** file from:

<https://www.leads4pass.com/hp2-z30.html>

100% Passing Guarantee
100% Money Back Assurance

Following Questions and Answers are all new published by HP Official Exam Center

-  **Instant Download** After Purchase
-  **100% Money Back** Guarantee
-  **365 Days** Free Update
-  **800,000+** Satisfied Customers

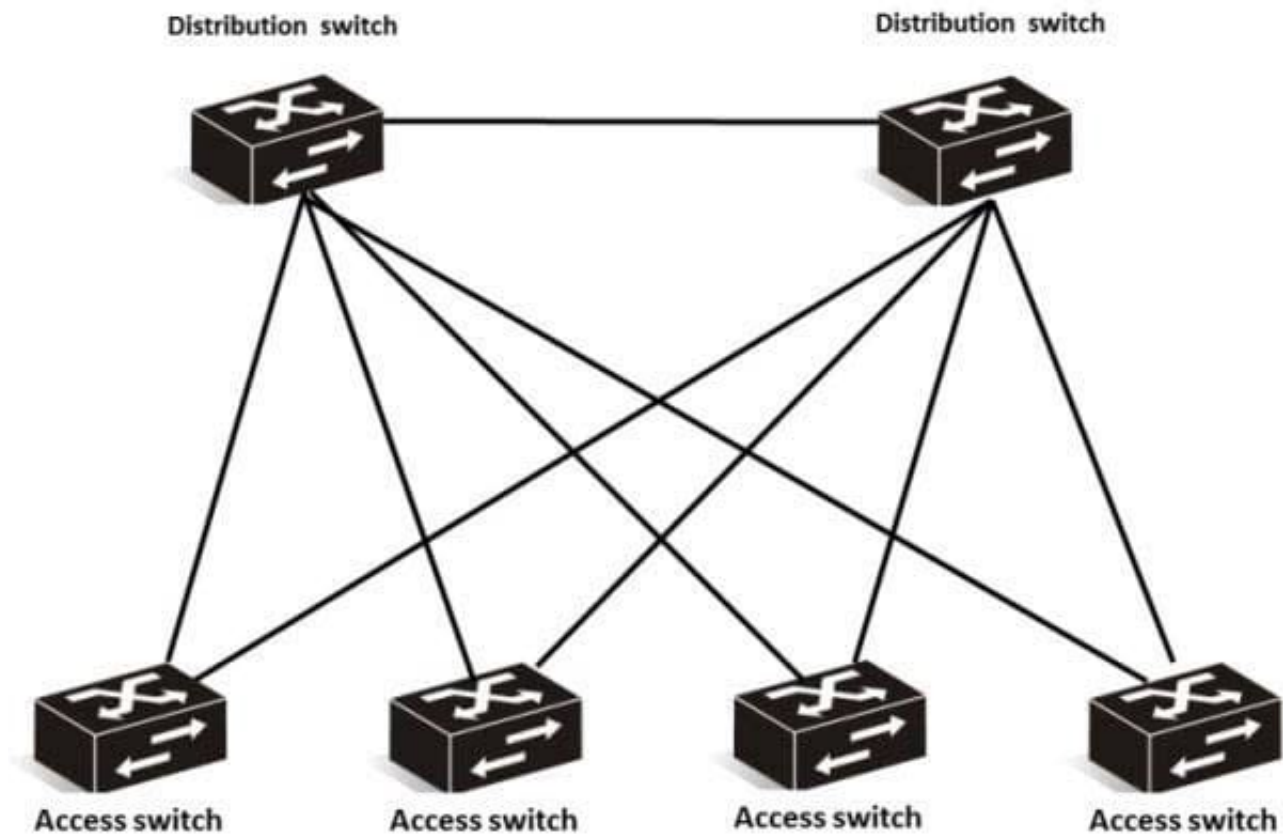


QUESTION 1

Which protocol only requires MAC addressing?

- A. LLDP
- B. DHCP
- C. NTP
- D. Syslog

Correct Answer: A

QUESTION 2

A network administrator has two distribution layer switches and four access layer switches. The network administrator is constantly resolving Spanning Tree problems and is looking for an alternative solution that provides redundancy and no Spanning Tree.

- A. ProVision switches with routing
- B. ProVision switches with aggregation

- C. Comware switches with auto-links
- D. Comware switches with distributed trunking

Correct Answer: B

QUESTION 3

Which statement is true about the management of HP ProVision and Comware switches?

- A. Telnet SSH are enabled by default on Comware switches.
- B. Telnet is enabled but SSH is disabled on ProVision switches.
- C. Comware switches, by default, store usernames and passwords in a separate configuration file.
- D. ProVision switches, by default, store usernames and passwords in a separate configuration file.

Correct Answer: D

QUESTION 4

A customer must connect networks in two buildings. The buildings are 15 meters apart. The customer does not want the additional cost of installing fiber between the two buildings and thus is exploring wireless options.

If the customer selects an 802.11n wireless solution, which wireless mode should they use?

- A. inline
- B. infrastructure
- C. in-cell relay
- D. multipoint

Correct Answer: C

QUESTION 5

Which technology allows 802.11n scale up speeds of 600 Mbps?

- A. Spatial Multiplexing (SM)
- B. Multiple-Input Multiple-Output (MIMO)
- C. Worldwide Interoperability for Microwave Access (WIMAX)
- D. Channel Bonding (CB)

Correct Answer: B

[HP2-Z30 PDF Dumps](#)

[HP2-Z30 VCE Dumps](#)

[HP2-Z30 Exam Questions](#)