

## HPE6-A45<sup>Q&As</sup>

Implementing Aruba Campus Switching solutions

**Pass HP HPE6-A45 Exam with 100% Guarantee**

Free Download Real Questions & Answers **PDF** and **VCE** file from:

<https://www.leads4pass.com/hpe6-a45.html>

100% Passing Guarantee  
100% Money Back Assurance

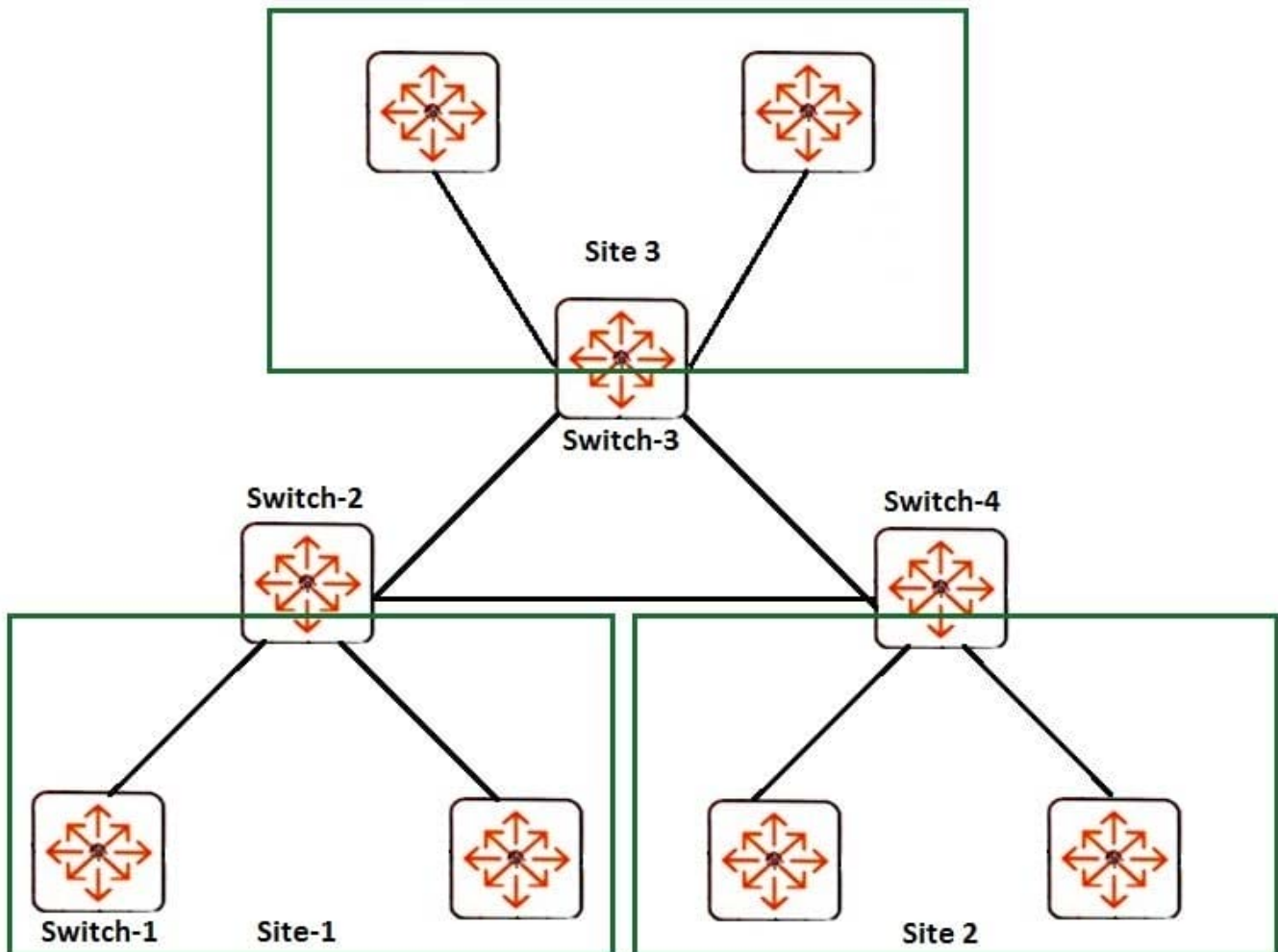
Following Questions and Answers are all new published by HP Official Exam Center

- ⚙️ **Instant Download** After Purchase
- ⚙️ **100% Money Back** Guarantee
- ⚙️ **365 Days** Free Update
- ⚙️ **800,000+** Satisfied Customers



**QUESTION 1**

Refer to the exhibit.



The routing switches shown in the exhibit use OSPF, and all of their interfaces are in Area 1. A faulty link on Switch-1 went up and down many times over the course of several hours. This caused link state updates (LSUs) to flood all of the routing devices in the OSPF AS and reduce performance. The network administrator fixed the faulty link on Switch-1, but the administrator also wants to mitigate the effects if a similar issue occurs in the future.

Which design improvement would help?

- A. Configure Area 1 as a stub area on all routers except Switch-2, Switch-3, and Switch-4
- B. Divide the AS into different areas, and aggregate routes between them
- C. Divide the AS into different areas, and configure the backbone area as an NSSA
- D. Decrease the LSA generation timer, and make sure to set the same value on all routers

Correct Answer: B

**QUESTION 2**

A network administrator configures DHCP snooping on VLAN 2. How does the switch handle DHCP traffic that arrives in this VLAN on an untrusted interface?

- A. It accepts packets from a DHCP server, but drops client packets.
- B. It drops all DHCP traffic and logs a security event.
- C. It accepts both client and server packets as long as they match the DHCP binding table.
- D. It accepts client packets, but drops packets from a DHCP server.

Correct Answer: A

---

**QUESTION 3**

A network administrator configures connection rate filtering on interface 1 with the throttle action. Device 1 crosses the threshold and triggers the action.

What does the switch do?

- A. It temporarily drops all IP traffic from Device 1 only.
- B. It temporarily drops all IP traffic on interface 1.
- C. It drops all IP traffic from Device 1 until the host is manually unblocked.
- D. It drops all IP traffic on interface 1 until the interface is manually unblocked.

Correct Answer: A

---

**QUESTION 4**

An AOS-Switch needs to implement tunneled node in role-based mode. Aruba ClearPass is configured to assign users for which the traffic should be tunneled to a role named tunnel. The Aruba Mobility Controller should apply policies associated with the employees group to these users.

What is the correct user role configuration on the AOS-Switch for this scenario?

- A. two user roles, one named tunnel that uses the tunneled-node-redirect command, and one named employees
- B. two user roles, one named employees that uses the tunneled-node-redirect command, and one named tunnel
- C. one user role named tunnel with employees set as the secondary role in the tunneled-node-redirect command
- D. one user role named employees with tunnel set as the secondary role in the tunneled-node-redirect command

Correct Answer: D

---

## QUESTION 5

What must an OSPF router do when it receives a link state update?

- A. It must participate in a new election for the Designated Router and Backup DR.
- B. It must initiate a graceful restart timer.
- C. It must re-establish adjacency with its Designated Router and Backup DR.
- D. It must run the shortest path first algorithm.

Correct Answer: D

[HPE6-A45 PDF Dumps](#)

[HPE6-A45 Study Guide](#)

[HPE6-A45 Braindumps](#)