



MS-100^{Q&As}

Microsoft 365 Identity and Services

Pass Microsoft MS-100 Exam with 100% Guarantee

Free Download Real Questions & Answers **PDF** and **VCE** file from:

<https://www.lead4pass.com/ms-100.html>

100% Passing Guarantee
100% Money Back Assurance

Following Questions and Answers are all new published by Microsoft
Official Exam Center

-  **Instant Download** After Purchase
-  **100% Money Back** Guarantee
-  **365 Days** Free Update
-  **800,000+** Satisfied Customers





QUESTION 1

SIMULATION

Please wait while the virtual machine loads. Once loaded, you may proceed to the lab section. This may take a few minutes, and the wait time will not be deducted from your overall test time.

When the Next button is available, click it to access the lab section. In this section, you will perform a set of tasks in a live environment. While most functionality will be available to you as it would be in a live environment, some functionality

(e.g., copy and paste, ability to navigate to external websites) will not be possible by design.

Scoring is based on the outcome of performing the tasks stated in the lab. In other words, it doesn't matter how you accomplish the task, if you successfully perform it, you will earn credit for that task.

Labs are not timed separately, and this exam may have more than one lab that you must complete. You can use as much time as you would like to complete each lab. But, you should manage your time appropriately to ensure that you are

able to complete the lab(s) and all other sections of the exam in the time provided.

Please note that once you submit your work by clicking the Next button within a lab, you will NOT be able to return to the lab.

You may now click next to proceed to the lab.

Lab information

Use the following login credentials as needed:

To enter your username, place your cursor in the Sign in box and click on the username below.

To enter your password, place your cursor in the Enter password box and click on the password below.

Microsoft 365 Username:

admin@M365x981607.onmicrosoft.com

Microsoft 365 Password: *yfLo7lr2andy-

If the Microsoft 365 portal does not load successfully in the browser, press CTRL-K to reload the portal in a new browser tab.

The following information is for technical support purposes only:

Lab Instance: 10811525

Your organization recently implemented a new data retention policy. The policy requires that all files stored in an employee's Microsoft OneDrive folders be retained for 60 days after the employee is terminated from the organization.

The human resources (HR) department of the organization deletes the user accounts of all terminated employees.

You need to ensure that the organization meets the requirements of the data retention policy.



A. See below.

Correct Answer: A

You need to configure the OneDrive retention period for deleted users.

1.

Go to the OneDrive admin center.

2.

Select Storage.

3.

Set the “Days to retain files in OneDrive after a user account is marked for deletion” option to 60.

4.

Click Save to save the changes.

References: <https://docs.microsoft.com/bs-latn-ba/onedrive/set-retention>

QUESTION 2

You have a Microsoft 365 subscription that uses a default domain named contoso.com. The domain contains the users shown in the following table.

Name	Member of
User1	Compliant
User2	Group1, Group2

The domain contains the devices shown in the following table.

Name	Compliance status
Device1	Compliant
Device2	Noncompliant

The domain contains conditional access policies that control access to a cloud app named App1. The policies are configured as shown in the following table.

Name	Includes	Excludes	Device state includes	Device state excludes	Grant
Policy1	Group1	None	All device states	Devices marked as compliant	Block access
Policy2	Group1	Group2	None	None	Block Access
Policy3	Group1	None	All device states	None	Grant access



For each of the following statements, select Yes if the statement is true. Otherwise, select No. NOTE: Each correct selection is worth one point.

Hot Area:

Answer Area

Statements	Yes	No
User1 can access App1 from Device1.	<input type="radio"/>	<input type="radio"/>
User2 can access App1 from Device1.	<input type="radio"/>	<input type="radio"/>
User2 can access App1 from Device2.	<input type="radio"/>	<input type="radio"/>

Correct Answer:

Answer Area

Statements	Yes	No
User1 can access App1 from Device1.	<input checked="" type="radio"/>	<input type="radio"/>
User2 can access App1 from Device1.	<input checked="" type="radio"/>	<input type="radio"/>
User2 can access App1 from Device2.	<input type="radio"/>	<input checked="" type="radio"/>

Box 1: Yes.

User1 is in a group named Compliant. All the conditional access policies apply to Group1 so they don't apply to User1.

As there is no conditional access policy blocking access for the group named Compliant, User1 is able to access App1 using any device.

Box 2: Yes.

User2 is in Group1 so Policy1 applies first. Policy1 excludes compliant devices and Device1 is compliant. Therefore, Policy1 does not apply so we move on to Policy2.



User2 is also in Group2. Policy2 excludes Group2. Therefore, Policy2 does not apply so we move on to Policy3.

Policy3 applies to Group1 so Policy3 applies to User2. Policy3 applies to 'All device states' so Policy3 applies to Device1. Policy3 grants access. Therefore, User2 can access App1 using Device1.

Box 3: No.

User2 is in Group1 so Policy1 applies. Policy1 excludes compliant devices but Devices is non-compliant. Therefore, User2 cannot access App1 from Device2.

References:

<https://docs.microsoft.com/en-us/azure/active-directory/conditional-access/plan-conditional-access>

QUESTION 3

HOTSPOT

Your network contains an Active Directory domain named fabrikam.com. The domain contains the objects shown in the following table.

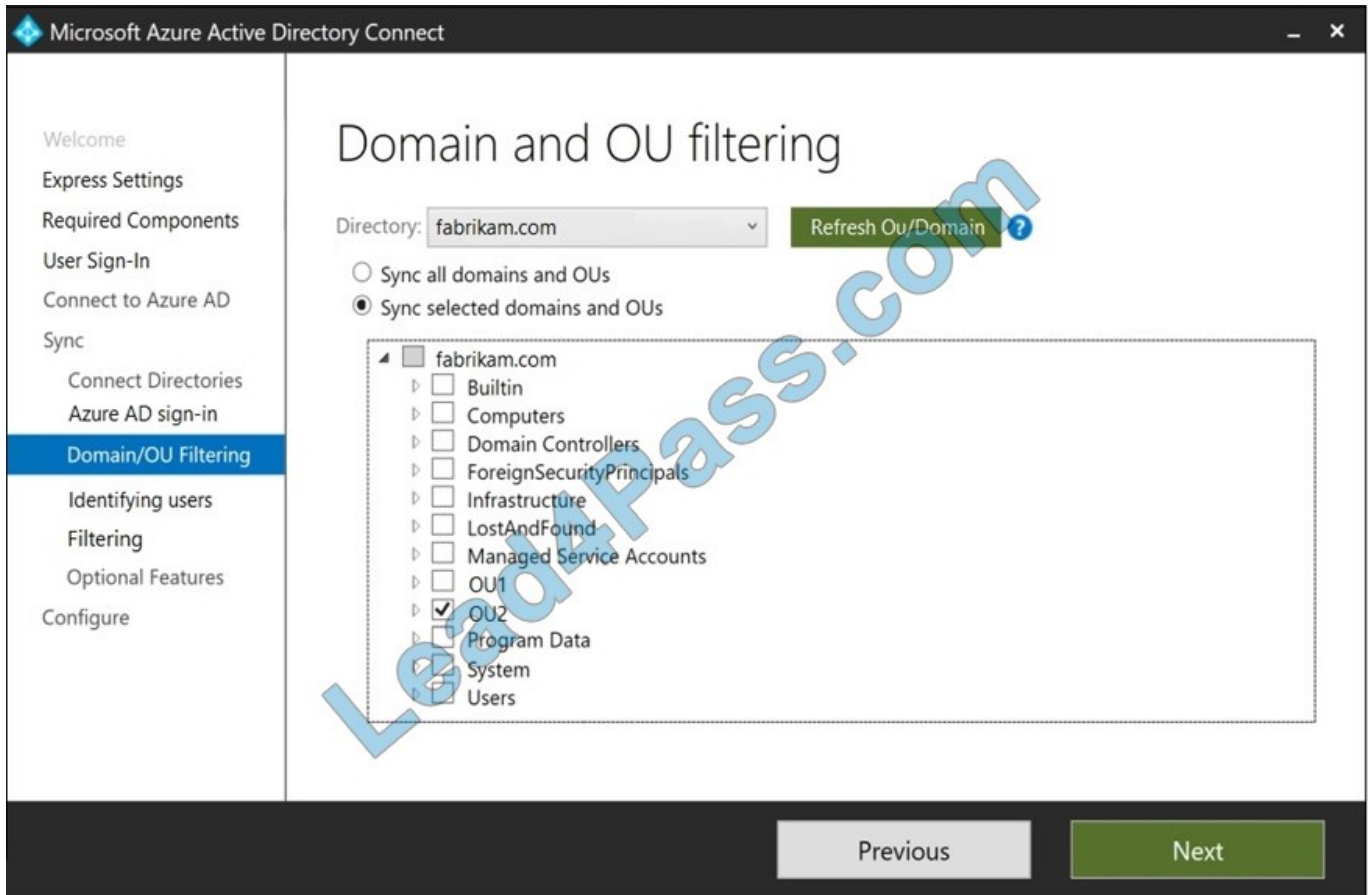
Name	Type	In organizational unit (OU)
User1	User	OU1
User2	User	OU1
Group1	Security Group – Global	OU1
User3	User	OU2
Group2	Security Group – Global	OU2

The groups have the members shown in the following table.

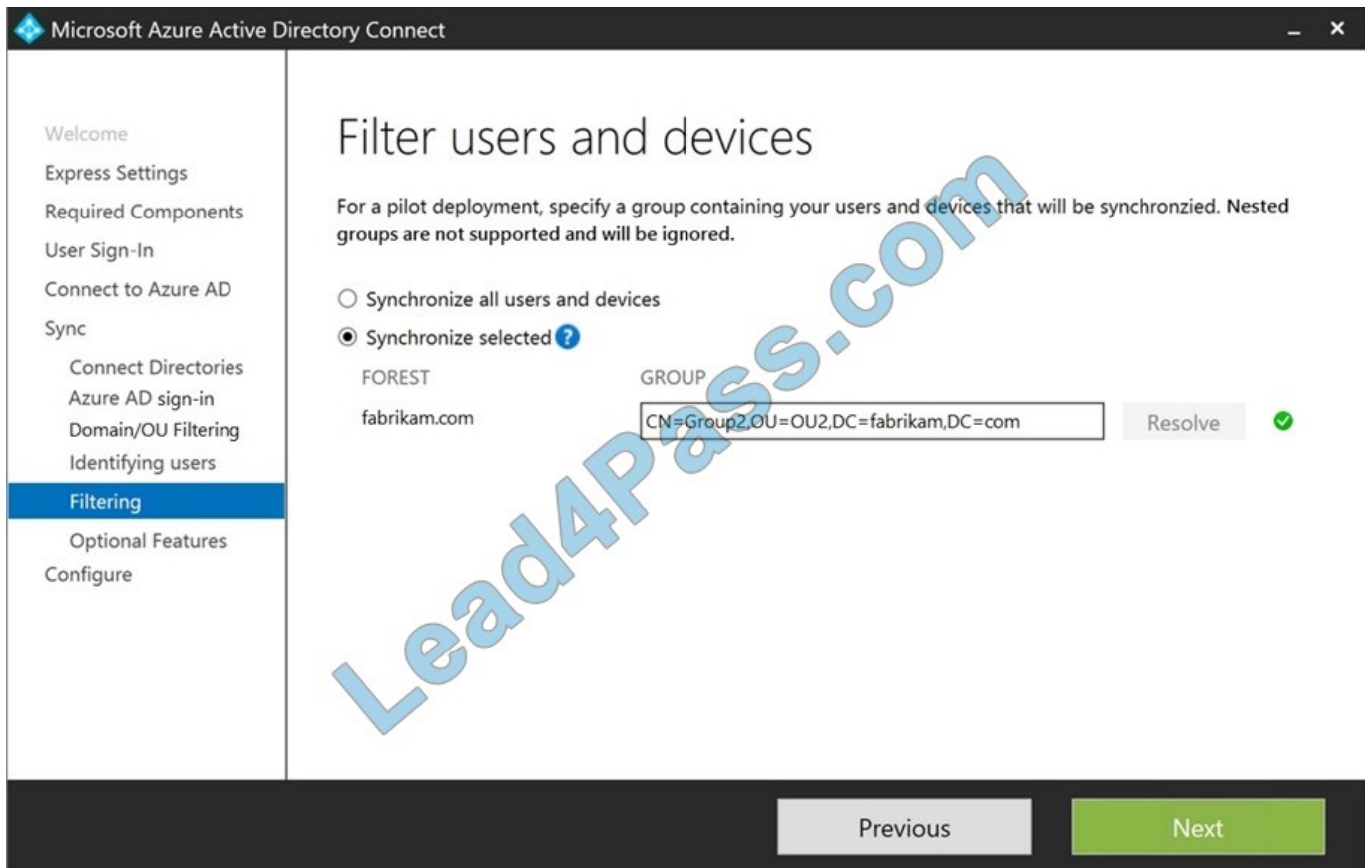
Group	Members
Group1	User1
Group2	User2, User3, Group1

You are configuring synchronization between fabrikam.com and a Microsoft Azure Active Directory (Azure AD) tenant.

You configure the Domain/OU Filtering settings in Azure AD Connect as shown in the Domain/OU Filtering exhibit. (Click the Domain/OU Filtering tab.)



You configure the Filtering settings in Azure AD Connect as shown in the Filtering exhibit. (Click the Filtering tab.)



For each of the following statements, select Yes if the statement is true. Otherwise, select No.

NOTE: Each correct selection is worth one point.

Hot Area:

Statements	Yes	No
User2 will synchronize to Azure AD.	<input type="radio"/>	<input type="radio"/>
Group2 will synchronize to Azure AD.	<input type="radio"/>	<input type="radio"/>
User3 will synchronize to Azure Ad.	<input type="radio"/>	<input type="radio"/>

Correct Answer:



Statements	Yes	No
User2 will synchronize to Azure AD.	<input type="radio"/>	<input checked="" type="radio"/>
Group2 will synchronize to Azure AD.	<input checked="" type="radio"/>	<input type="radio"/>
User3 will synchronize to Azure Ad.	<input checked="" type="radio"/>	<input type="radio"/>

Box 1: No

The filtering is configured to synchronize Group2 and OU2 only. The effect of this is that only members of Group2 who are in OU2 will be synchronized.

User2 is in Group2. However, the User2 account object is in OU1 so User2 will not synchronize to Azure AD.

Box 2: Yes

Group2 is in OU2 so Group2 will synchronize to Azure AD. However, only members of the group who are in OU2 will synchronize. Members of Group2 who are in OU1 will not synchronize.

Box 3: Yes

User3 is in Group2 and in OU2. Therefore, User3 will synchronize to Azure AD.

References:

<https://docs.microsoft.com/en-us/azure/active-directory/hybrid/how-to-connect-sync-configure-filtering#group-based-filtering>

QUESTION 4

You need to assign User2 the required roles to meet the security requirements and the technical requirements. To which two roles should you assign User2? Each correct answer presents part of the solution. NOTE: Each correct selection is worth one point.

- A. the Exchange View-only Organization Management role
- B. the Microsoft 365 Records Management role
- C. the Exchange Online Help Desk role
- D. the Microsoft 365 Security Reader role
- E. the Exchange Online Compliance Management role

Correct Answer: DE

User2 must be able to view reports and schedule the email delivery of security and compliance reports.



The Security Reader role can view reports but not schedule the email delivery of security and compliance reports.

The Exchange Online Compliance Management role can schedule the email delivery of security and compliance reports.

Reference:

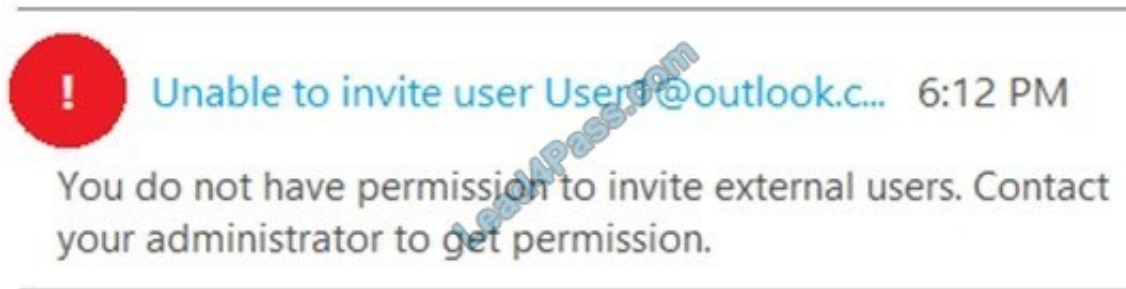
<https://docs.microsoft.com/en-us/exchange/permissions-exo/permissions-exo>

QUESTION 5

You have a Microsoft Azure Active Directory (Azure AD) tenant named contoso.onmicrosoft.com.

An external user has a Microsoft account that uses an email address of user1@outlook.com.

An administrator named Admin1 attempts to create a user account for the external user and receives the error message shown in the following exhibit.



You need to ensure that Admin1 can add the user.

What should you do from the Azure Active Directory admin center?

- A. Add a custom domain name named outlook.com.
- B. Modify the Authentication methods.
- C. Modify the External collaboration settings.
- D. Assign Admin1 the Security administrator role.

Correct Answer: C

In the External Collaboration settings, you can set the following invitation policies:

1. Turn off invitations
2. Only admins and users in the Guest Inviter role can invite
3. Admins, the Guest Inviter role, and members can invite
4. All users, including guests, can invite



In this question, an Admin user is unable to invite the guest user. This suggests that invitations are turned off altogether.

Reference:

<https://docs.microsoft.com/en-us/azure/active-directory/b2b/delegate-invitations>

[MS-100 Practice Test](#)

[MS-100 Exam Questions](#)

[MS-100 Braindumps](#)



To Read the [Whole Q&As](#), please purchase the [Complete Version](#) from [Our website](#).

Try our product !

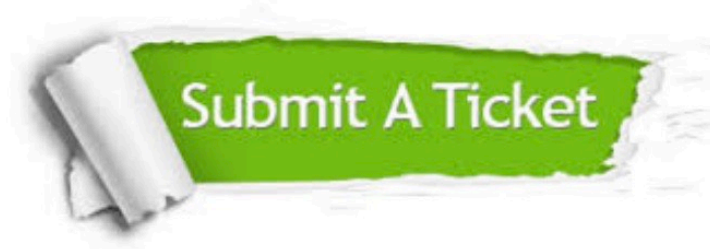
100% Guaranteed Success
100% Money Back Guarantee
365 Days Free Update
Instant Download After Purchase
24x7 Customer Support
Average 99.9% Success Rate
More than 800,000 Satisfied Customers Worldwide
Multi-Platform capabilities - [Windows](#), [Mac](#), [Android](#), [iPhone](#), [iPod](#), [iPad](#), [Kindle](#)

We provide exam PDF and VCE of Cisco, Microsoft, IBM, CompTIA, Oracle and other IT Certifications. You can view Vendor list of All Certification Exams offered:

<https://www.lead4pass.com/allproducts>

Need Help

Please provide as much detail as possible so we can best assist you.
To update a previously submitted ticket:



 <p>One Year Free Update Free update is available within One Year after your purchase. After One Year, you will get 50% discounts for updating. And we are proud to boast a 24/7 efficient Customer Support system via Email.</p>	 <p>Money Back Guarantee To ensure that you are spending on quality products, we provide 100% money back guarantee for 30 days from the date of purchase.</p>	 <p>Security & Privacy We respect customer privacy. We use McAfee's security service to provide you with utmost security for your personal information & peace of mind.</p>
---------------------------------------------------------------------------------------------------------------------------------------------------------------------------------------------------------------------------------------------------------------------------------------------------------------------------------	-------------------------------------------------------------------------------------------------------------------------------------------------------------------------------------------------------------------------------------------------------------	------------------------------------------------------------------------------------------------------------------------------------------------------------------------------------------------------------------------------------------------------------------------------------

Any charges made through this site will appear as Global Simulators Limited.
All trademarks are the property of their respective owners.
Copyright © lead4pass, All Rights Reserved.