

NSE5_FM-G-7.0^{Q&As}

Fortinet NSE 5 - FortiManager 7.0

Pass Fortinet NSE5_FM-G-7.0 Exam with 100% Guarantee

Free Download Real Questions & Answers **PDF** and **VCE** file from:

https://www.leads4pass.com/nse5_fm-g-7-0.html

100% Passing Guarantee
100% Money Back Assurance

Following Questions and Answers are all new published by Fortinet Official Exam Center

- ⚙️ **Instant Download** After Purchase
- ⚙️ **100% Money Back** Guarantee
- ⚙️ **365 Days** Free Update
- ⚙️ **800,000+** Satisfied Customers



QUESTION 1

An administrator, Trainer, who is assigned the Super_User profile, is trying to approve a workflow session that was submitted by another administrator, Student. However, Trainer is unable to approve the workflow session. What can prevent an admin account that has Super_User rights over the device from approving a workflow session?

Session List

View Diff						
<input type="checkbox"/>	ID	Name	User	Date Submitt...	Approved/To...	Comments
<input checked="" type="checkbox"/>	1	Firewall p..	Student	2017-06-01...	0/1	firewall policies

+ Add Comment

[Student] - 2017-06-01
13:31:35
firewall policies
[Student] - 2017-06-01
16:29:27

- A. Trainer is not a part of workflow approval group
- B. Trainer does not have full rights over this ADOM
- C. Trainer must close Student's workflow session before approving the request
- D. Student, who submitted the workflow session, must first self-approve the request

Correct Answer: A

Reference: https://help.fortinet.com/fmgr/50hlp/56/5-6-1/FMG-FAZ/0800_ADOMs/1800_Workflow/0600_Workflow%20sessions.htm

QUESTION 2

Refer to the exhibits. Exhibit one.

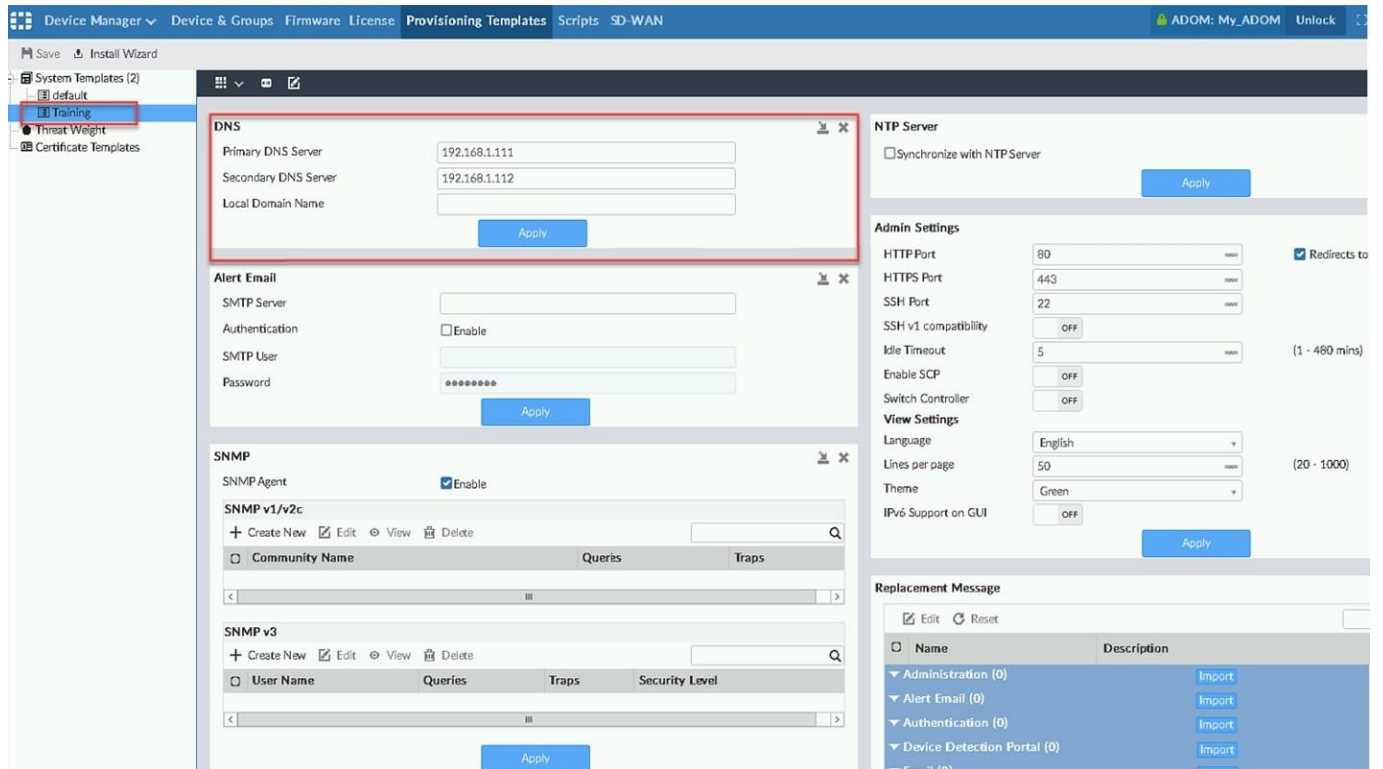


Exhibit two.

```
Install Preview

Virtual Domain: global, root

ccnfig system ntp
unset ntpsync
end
ccnfig system email-server
unset server
unset security
end
ccnfig log fortianalyzer setting
unset status
unset server
unset upload-option
unset reliable
unset serial
end
ccnfig system central-management
ccnfig server-list
purge
end
end
ccnfig system global
unset admintimeout
unset admin-https-redirect
end
ccnfig system dns
set primary 192.168.1.111
set secondary 192.168.1.112
end
ccnfig system snmp sysinfo
```

Download Close

An administrator created a new system template named Training with two new DNS addresses on FortiManager. During the installation preview stage, the administrator notices that many unset commands need to be pushed. What can be the main reason for these unset commands?

- A. The DNS addresses in the default system settings are the same as the Training system template
- B. The Training system template has other default settings
- C. The ADOM is locked by another administrator
- D. The Training system template does not have assigned devices

Correct Answer: B

QUESTION 3

An administrator would like to create an SD-WAN using central management.

What steps does the administrator need to perform to create an SD-WAN using central management?

- A. First create an SD-WAN firewall policy, add member interfaces to the SD-WAN template and create a static route
- B. You must specify a gateway address when you create a default static route
- C. Remove all the interface references such as routes or policies
- D. Enable SD-WAN central management in the ADOM, add member interfaces, create a static route and SDWAN firewall policies.

Correct Answer: D

QUESTION 4

In addition to the default ADOMs, an administrator has created a new ADOM named Training for FortiGate devices. The administrator authorized the FortiGate device on FortiManager using the Fortinet Security Fabric. Given the administrator's actions, which statement correctly describes the expected result?

- A. The FortiManager administrator must add the authorized device to the Training ADOM using the Add Device wizard only.
- B. The authorized FortiGate will be automatically added to the Training ADOM.
- C. The authorized FortiGate will appear in the root ADOM.
- D. The authorized FortiGate can be added to the Training ADOM using FortiGate Fabric Connectors.

Correct Answer: C

QUESTION 5

An administrator has assigned a global policy package to custom ADOM1. Then the administrator creates a new policy package, Fortinet, in the custom ADOM1. Which statement about the global policy package assignment to the newly-created policy package Fortinet is true?

- A. When a new policy package is created, it automatically assigns the global policies to the new package.
- B. When a new policy package is created, you need to assign the global policy package from the global ADOM.
- C. When a new policy package is created, you need to reapply the global policy package to the ADOM.
- D. When a new policy package is created, you can select the option to assign the global policies to the new package.

Correct Answer: A

Global Policy Package is applied at the ADOM level and you have the option to choose which ADOM policy packages you want to exclude (there is no option to choose Policy Packages to include).

[Latest NSE5_FMG-7.0 Dumps](#)

[NSE5_FMG-7.0 PDF Dumps](#)

[NSE5_FMG-7.0 VCE Dumps](#)