

Vendor: Citrix

Exam Code: 1Y0-A21

Exam Name: Basic Administration for Citrix NetScaler 9.2

Version: Demo

QUESTION 1

Scenario: An administrator is working with a Citrix consultant to architect and implement a NetScaler solution. They plan to use GSLB and DNS views in the environment.

In which two manners can the administrator configure the NetScaler system to be able to configure DNS views that support GSLB records? (Choose two.)

- A. Configure as an ADNS.
- B. Configure as a DNS proxy.
- C. Configure CNAME records.
- D. Configure as an End resolver.

Correct Answer: AB

QUESTION 2

In which manner can an administrator configure a NetScaler device so that it can load balance external DNS servers?

- A. Configure as an ADNS.
- B. Configure CNAME records.
- C. Configure as a DNS proxy.
- D. Configure as an End resolver.

Correct Answer: C

QUESTION 3

Scenario: A financial company needs to maintain end-to-end security in network traffic. The company also requires that an administrator reduce the CPU levels for back-end servers in their environment because it requires end-to-end security.

Which setting on the SSL virtual server reduces CPU utilization on the back-end?

- A. SSLv3
- B. SSL Redirect
- C. SSL Session Reuse
- D. SSL Client Certificates

Correct Answer: C

QUESTION 4

A network administrator wants to ensure that connection multiplexing is enabled for all client connections that hit a virtual server. Which service type should the administrator select to enable connection multiplexing?

- A. SSL
- B. FTP
- C. TCP
- D. HTTP

Correct Answer: D

QUESTION 5

Scenario: A company has contracts with multiple ISPs and would like to use all of them for Internet connections although some ISP routers are faster than others. The company also plans to use a NetScaler system for load balancing and failover.

What can an administrator configure to ensure that all ISP connections are being used while avoiding

retransmission or out-of-order packets in this environment?

- A. Multiple VLANs with Ingress rules
- B. Link load balancing with destination IP-based persistence
- C. Round robin load balancing with reverse RNAT configured
- D. A load balancing policy with the appropriate preferred IP and preferred port parameters configured

Correct Answer: B

QUESTION 6

Scenario: A company has contracts with multiple ISPs and would like to use all of them for Internet connections. The company also plans to use a NetScaler system for load balancing and failover.

What can an administrator configure to ensure that all ISP connections are being used and return traffic maintains the same path as the inbound traffic in this environment?

- A. Round robin load balancing with INAT configured
- B. Link load balancing with RNAT and USNIP enabled
- C. Multiple VLANs with Ingress rules and USIP enabled
- D. A load balancing policy with the appropriate preferred IP and preferred port parameters configured

Correct Answer: B

QUESTION 7

Scenario: A customer has two datacenters in geographically dispersed locations, both serving content for a web-based application. Content for both datacenters should always be available.

Which method should an administrator use to make content from both datacenters available at all times?

- A. HA
- B. GSLB
- C. Content switching
- D. Backup load balancing virtual servers

Correct Answer: B

QUESTION 8

Scenario: An administrator is managing a network environment that contains five datacenters, all of which are in different areas of the same country. The administrator plans to configure the NetScaler system to load balance the datacenters so that they can be used for disaster recovery.

How should the administrator configure the NetScaler system for disaster recovery and to optimize the user experience?

- A. Enable HA and use cache load balancing.
- B. Enable HA and use server load balancing.
- C. Enable GSLB and use the proximity method.
- D. Enable GSLB and use the round robin method.

Correct Answer: C

QUESTION 9

Scenario: An administrator needs to configure a NetScaler device so that a set of back-end servers in a LAN can initiate connections to the Internet. ACLs are configured in this environment. What must the administrator configure to meet the needs of this scenario?

- A. INAT on the servers in the LAN
- B. RNAT for the destination IP addresses

- C. NAT on the router to the NetScaler device
- D. RNAT for the subnet that includes the LAN IP addresses
- E. RNAT on the virtual servers bound to the servers in the LAN

Correct Answer: D

QUESTION 10

Which IP address type must be unique to each NetScaler in an HA pair?

- A. MIP
- B. NSIP
- C. SNIP
- D. Load balancing VIP

Correct Answer: B

QUESTION 11

In which two ways could an administrator configure a NetScaler system to allow a Web server log to record the original client IP addresses for incoming traffic? (Choose two.)

- A. USIP
- B. INAT
- C. USNIP
- D. Edge mode
- E. Client IP insertion

Correct Answer: AE

QUESTION 12

Scenario: A network administrator needs to configure VLANs on a NetScaler to support multiple networks. The NetScaler is connected through interface 1/1 to a switch port where VLAN10 is configured. This NetScaler is also connected through interface 1/2 to a switch port that is configured for VLAN20.

Given this scenario, which two steps does the administrator need to take to configure the NetScaler for VLAN10? (Choose two.)

- A. add vlan 10
- B. set vlan 10 -ifnum 1/1
- C. bind vlan 10 -ifnum 1/2
- D. bind vlan 10 -ifnum 1/1
- E. bind vlan 10 -ifnum 1/1 -tagged

Correct Answer: AD

QUESTION 13

Scenario: A customer has an HA pair configured and is making interface configuration changes on the primary node. However, the administrator notices that the changes are NOT being propagated to the secondary node.

What is the reason for this behavior?

- A. Propagation is not enabled.
- B. HA pair licensing is missing.
- C. Propagation is enabled, but synchronization is disabled.
- D. Interface configuration changes must be performed on each node.

Correct Answer: D

QUESTION 14

Scenario: A network administrator needs to configure routing on a NetScaler appliance. The NetScaler is in a DMZ whose gateway is 10.54.80.1/24. There are no configured routes on the NetScaler.

Given this topology, which is the appropriate routing configuration for the NetScaler?

- A. set default route 10.54.80.1
- B. add route 0.0.0.0 0.0.0.0 10.54.80.1
- C. set default route 0.0.0.0 0.0.0.0 10.54.80.1
- D. add route 0.0.0.0 255.255.255.255 10.54.80.1

Correct Answer: B

QUESTION 15

An administrator needs to configure a NetScaler system to dynamically advertise virtual IP addresses, directly connected routes and static routes to the upstream routers.

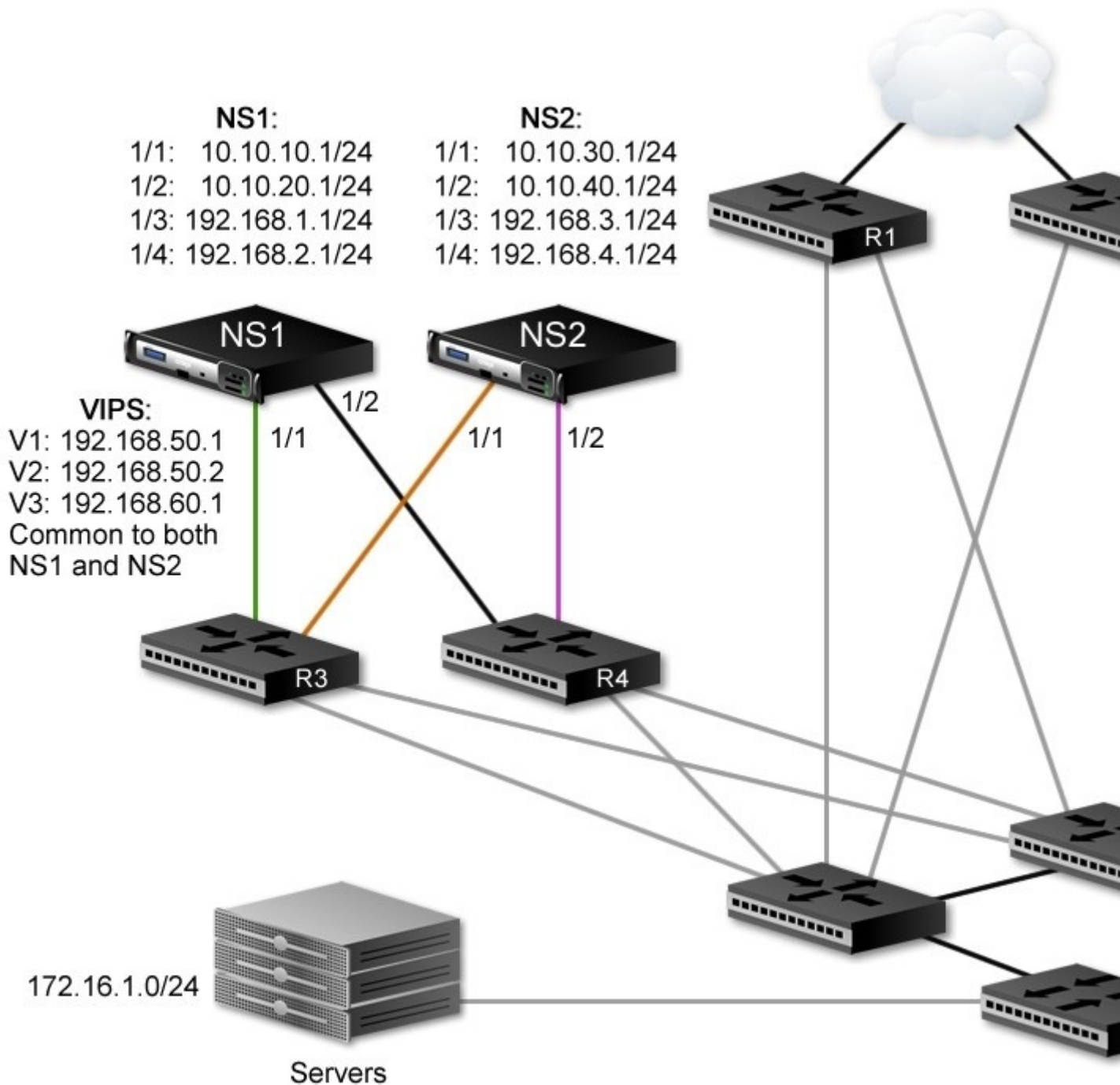
What must the administrator ensure is configured on the NetScaler system for this environment?

- A. RNAT
- B. L3 mode
- C. Static Routes
- D. Health Check monitor
- E. Route Health Injection (RHI)

Correct Answer: E

QUESTION 16

Scenario: An administrator is working within a network environment as depicted in the attached exhibit. The NetScaler systems in this HA pair need to exchange heartbeat packets over L3 through routers R3 and R4.



How can the administrator achieve this HA functionality?

- A. Enable the dynamic routing feature.
- B. Configure Route Health Injection (RHI).
- C. Bind a route monitor to each NetScaler device.
- D. Enable Independent Network Configuration (INC).

Correct Answer: D

QUESTION 17

Scenario: An ISP provides SaaS to enterprise customers as part of a cloud offering. A NetScaler is configured to support multi-tenant deployments. Traffic isolation for each enterprise (tenant) is achieved using VLAN segmentation for each enterprise customer. As an example, incoming client requests from

enterprise customers are assigned to separate VLANs. Which feature can an administrator configure to specify that the VIP for customer1 will only listen to requests coming from VLAN1 and the VIP from customer2 will only listen for requests from VLAN2?

- A. Static Routes
- B. Policy-based routing
- C. MAC-based Forwarding
- D. Network-aware policies

Correct Answer: D

QUESTION 18

An organization has a NetScaler HA pair that needs to be upgraded to the most recent build available for NetScaler version 9.2.

According to best practices, which three steps should the NetScaler administrator take to minimize downtime while accomplishing this task? (Choose three.)

- A. Disable propagation for the HA pair.
- B. Disable synchronization for the HA pair.
- C. Migrate the configuration to version 9.2.
- D. Disable heartbeat communication (HAMON).
- E. Enable Independent Network Configuration (INC).
- F. Upgrade the Secondary NetScaler unit in the HA pair first.

Correct Answer: ABF

QUESTION 19

Scenario: An administrator must plan the deployment of a NetScaler system for an environment that requires:

- All traffic to pass through the NetScaler appliance(s)
- Outbound connections to the Internet from a non-routable subnet
- Two Web server farms to be load balanced by the fewest connections
- All consumer web site traffic to be secured with SSL
- All traffic to pass through a network firewall prior to passing through the NetScaler appliance(s)
- Fault tolerance
- Disabled traffic bridging on the NetScaler

Which three steps must the administrator take to deploy the NetScaler system correctly for this environment according to best practices? (Choose three.)

- A. Configure proxy mode.
- B. Configure Layer 2 mode.
- C. Configure RNAT functionality.
- D. Deploy the NetScaler system with HA.
- E. Enable Independent Network Configuration (INC).
- F. Deploy the NetScaler system in an inline configuration.

Correct Answer: CDF

QUESTION 20

An administrator is upgrading the NetScaler HA pair to the latest 9.2 version of NetScaler using the CLI. Which step should the administrator take to update the documentation library prior to the upgrade?

- A. The documentation library is included as part of the build file.
- B. Decompress the documentation bundle and run the included installer.
- C. Place a copy of the documentation bundle in the same directory that contains the new build file.

- D. Place the documentation bundle in the nsconfig directory where it will be executed automatically at boot.

Correct Answer: C

QUESTION 21

Scenario: An administrator is planning a software upgrade of a NetScaler HA pair from NetScaler version 8.1 Standard Edition to version 9.2 Enterprise Edition in order to take advantage of the new features. In the current environment, the NSIP for the pair is an IPv4 address.

Which two steps must the administrator take to complete the NetScaler migration in this scenario? (Choose two.)

- A. Obtain a new NetScaler license.
- B. Enable the IPv6 protocol translation.
- C. Add the NSIP address after the HA pair has been upgraded.
- D. Ensure propagation and synchronization are disabled during migration.

Correct Answer: AD

QUESTION 22

An administrator needs to configure a NetScaler system in a manner that will increase the capacity and availability of a single communication channel between the NetScaler and another connected device. What should the administrator configure on the NetScaler system to achieve this requirement?

- A. NIC teaming
- B. Link Bonding
- C. Link Aggregation
- D. Interface Trunk mode

Correct Answer: C

QUESTION 23

Scenario: An administrator is managing a network environment with a stand-alone NetScaler system. The speed of the interfaces currently being used is inadequate for the amount of traffic that the NetScaler system is managing. The administrator needs to increase the available bandwidth on the system. The administrator also wants to add redundancy to the interfaces for failover.

What can the administrator do to meet the needs of this scenario with minimal change to the current network environment?

- A. Configure multiplexing.
- B. Configure link aggregation.
- C. Create a load balancing policy for the interfaces.
- D. Add a second NetScaler device and configure HA.

Correct Answer: B

QUESTION 24

What must an administrator configure when adding a new SNMP manager to a NetScaler configuration using the Configuration Utility?

- A. Source port
- B. SNMP community string
- C. Source Interface Number
- D. SNMP manager IP address
- E. SNMP Trap Type (Basic or Advanced)

Correct Answer: D