

5V0-41.20^{Q&As}

VMware SD-WAN Troubleshoot

Pass VMware 5V0-41.20 Exam with 100% Guarantee

Free Download Real Questions & Answers **PDF** and **VCE** file from:

<https://www.leads4pass.com/5v0-41-20.html>

100% Passing Guarantee
100% Money Back Assurance

Following Questions and Answers are all new published by VMware
Official Exam Center

- ⚙️ **Instant Download** After Purchase
- ⚙️ **100% Money Back** Guarantee
- ⚙️ **365 Days** Free Update
- ⚙️ **800,000+** Satisfied Customers

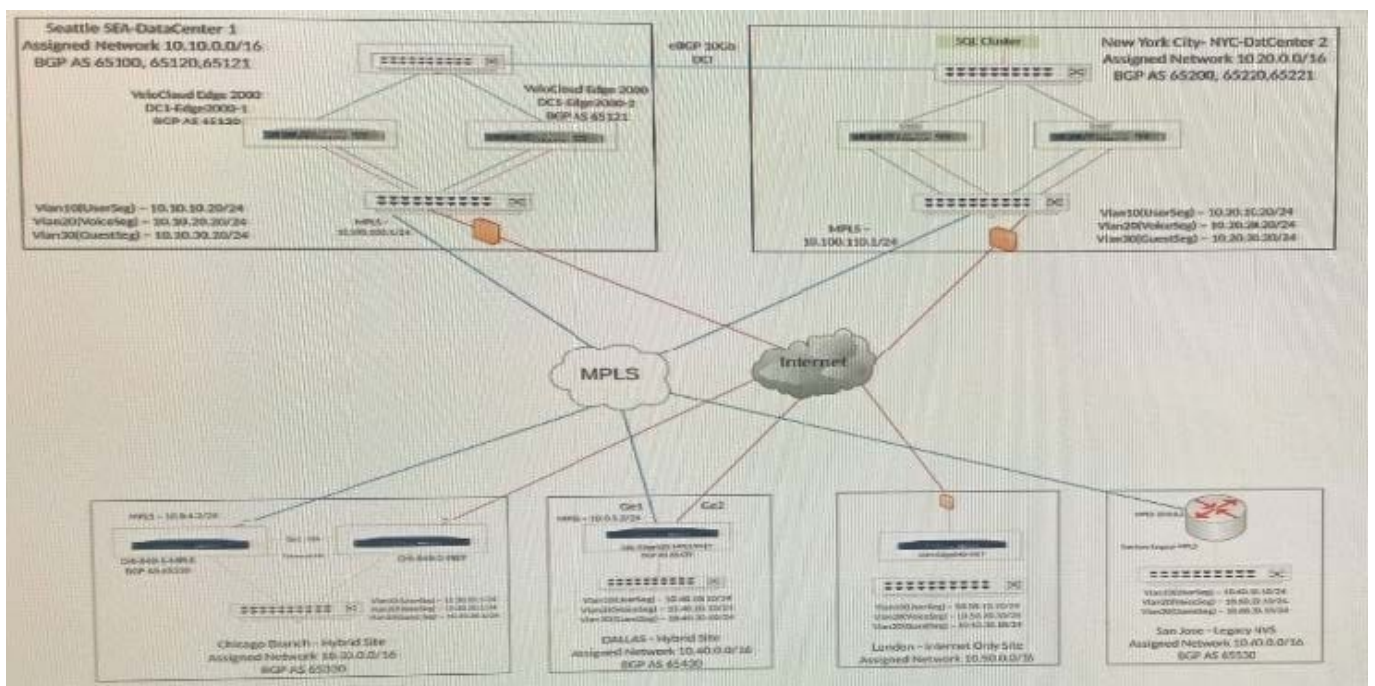


QUESTION 1

Scenario 2:

After completing the branch activation activities for all required branches, the network administrator attempts to test connectivity between the various branches and between the hubs and branches. The administrator notices a lack of connectivity despite being certain that configurations have been complete. The administrator also observed that several users are reporting intermittent connectivity to some of the applications they are accessing. Other users are reporting no access to these applications. Other users at some of the branches claim they cannot get to certain public resources. The administrator wants to ensure that all sites can talk to each other and all resources are accessible.

Exhibit.



A network administrator decides to deploy a local Checkpoint VNF appliance on the Edge in London to cut back on unnecessary traffic towards the NY Hub location. While attempting to deploy the VNF, the process keeps failing.

Where can the administrator check to see more detail?

- A. VCO > Monitor > Logging
- B. VCO > Monitor > Events
- C. VCO > Test and Troubleshoot > Remote Diagnostics > Events
- D. VCO > Test and Troubleshoot > Remote Actions > Alerts

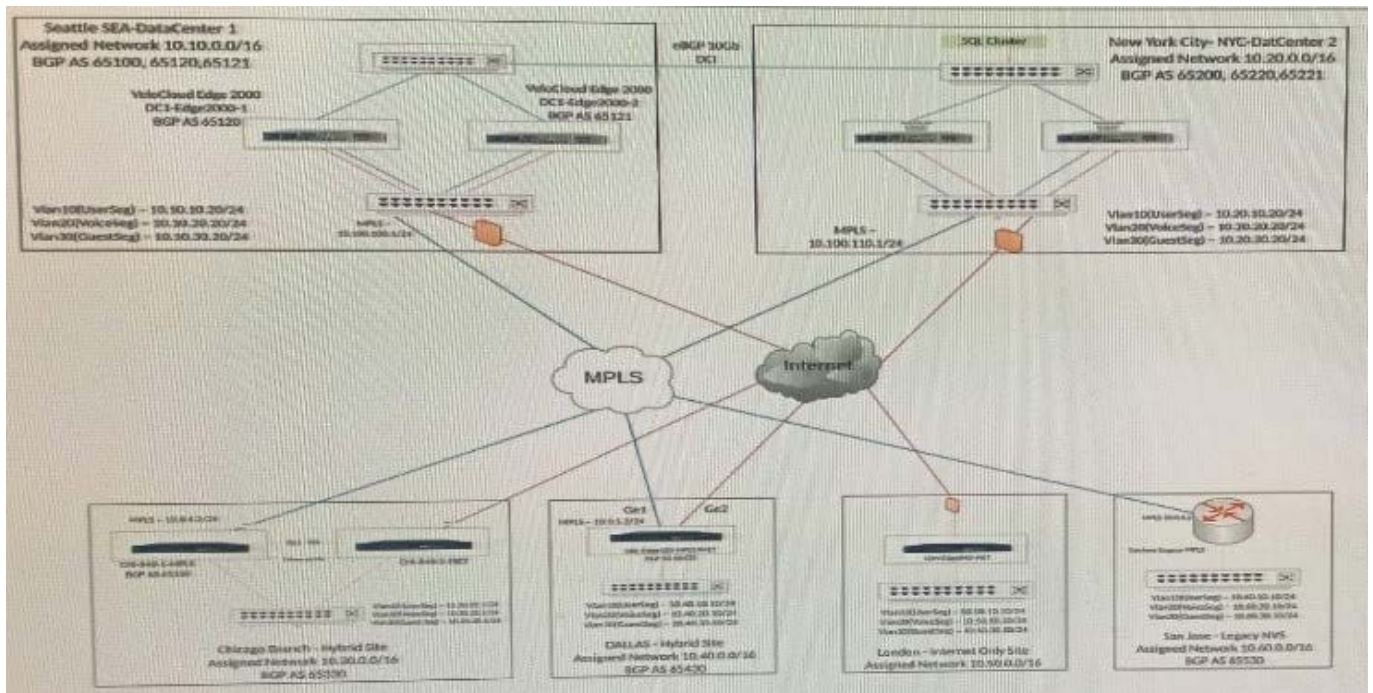
Correct Answer: B

QUESTION 2

Scenario 3:

After resolving numerous connectivity issues throughout the various branch sites, connectivity between applications and users is finally present. The network administrator is informed that during certain tests, applications are not performing as they are expected to. Users report that call quality has not fully improved and that some of their calls either drop or have poor voice quality where the conversation is breaking up. Other users are noticing that file transfers are slower than expect. A group of users from a few sites have reported slowness in accessing internal and external applications.

Exhibit.



A network administrator decides to deploy a local Checkpoint VNF appliance on the Edge in London to cut back on unnecessary traffic towards the NY hub location.

The Checkpoint VNF and associated security services were successfully deployed at the London Branch. Users are now complaining that Webpages are extremely slow to load, just like before.

What should the administrator do?

- A. Reboot the Edge, as this is a requirement in the deployment of a Security VNF.
- B. Disable and redeploy the VNF with lower memory requirements.
- C. Verify to see if a firewall rule in the Edge is set to allow traffic to the Checkpoint VNF.
- D. Check the flow records in Remote Diagnostics.

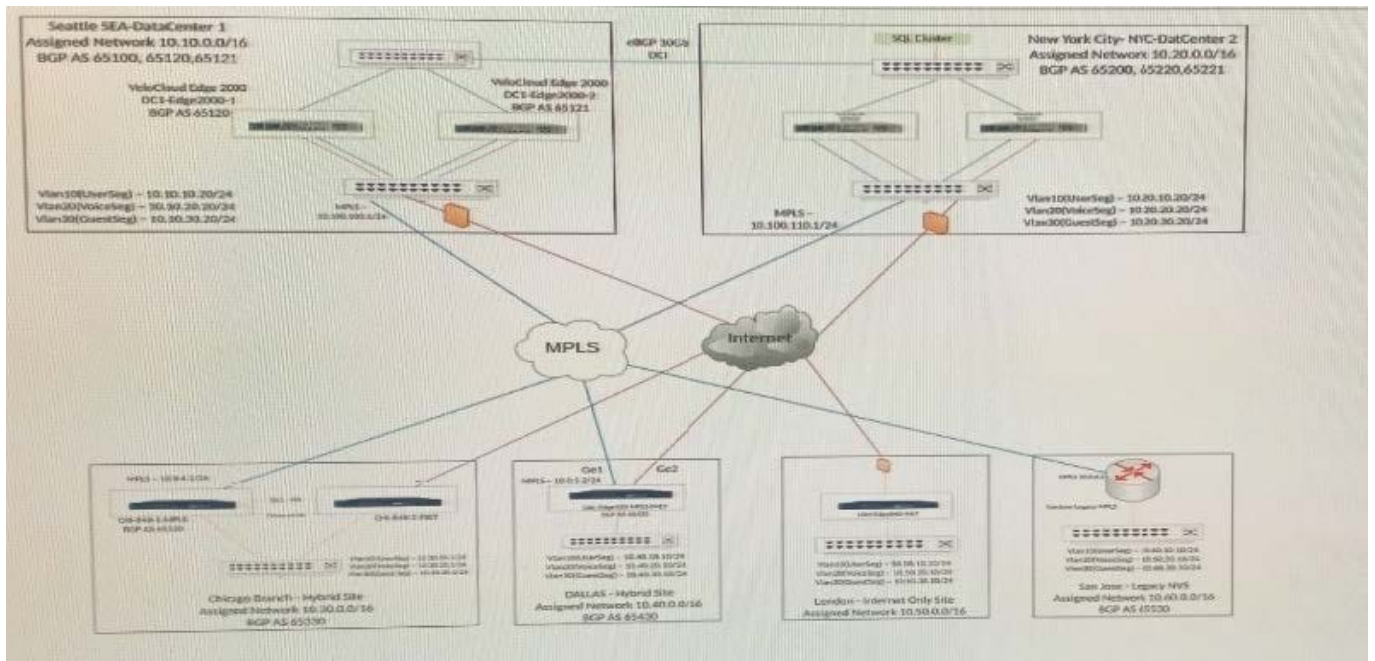
Correct Answer: B

QUESTION 3

Scenario 2:

After completing the branch activation activities for all required branches, the network administrator attempts to test connectivity between the various branches and between the hubs and branches. The administrator notices a lack of connectivity despite being certain that configurations have been complete. The administrator also observed that several users are reporting intermittent connectivity to some of the applications they are accessing. Other users are reporting no access to these applications. Other users at some of the branches claim they cannot get to certain public resources. The administrator wants to ensure that all sites can talk to each other and all resources are accessible.

Exhibit.



A network administrator is trying to create multiple overlays on a single physical interface on an Edge. The administrator is able to bring up only a single overlay so far, but is having trouble with bringing up additional overlays.

What could be the possible reason?

- A. The administrator does not have the right permission to create multiple overlays. The administrator needs to have an Operator-level privilege for this task.
- B. On the WAN overlay configuration, verify the IP address, next-hop, and the VLAN ID configuration.
- C. The licensing does not support multiple overlays on a single physical interface.
- D. Multiple overlays cannot be created on a single physical interface. Multiple physical interfaces are needed.

Correct Answer: A

QUESTION 4

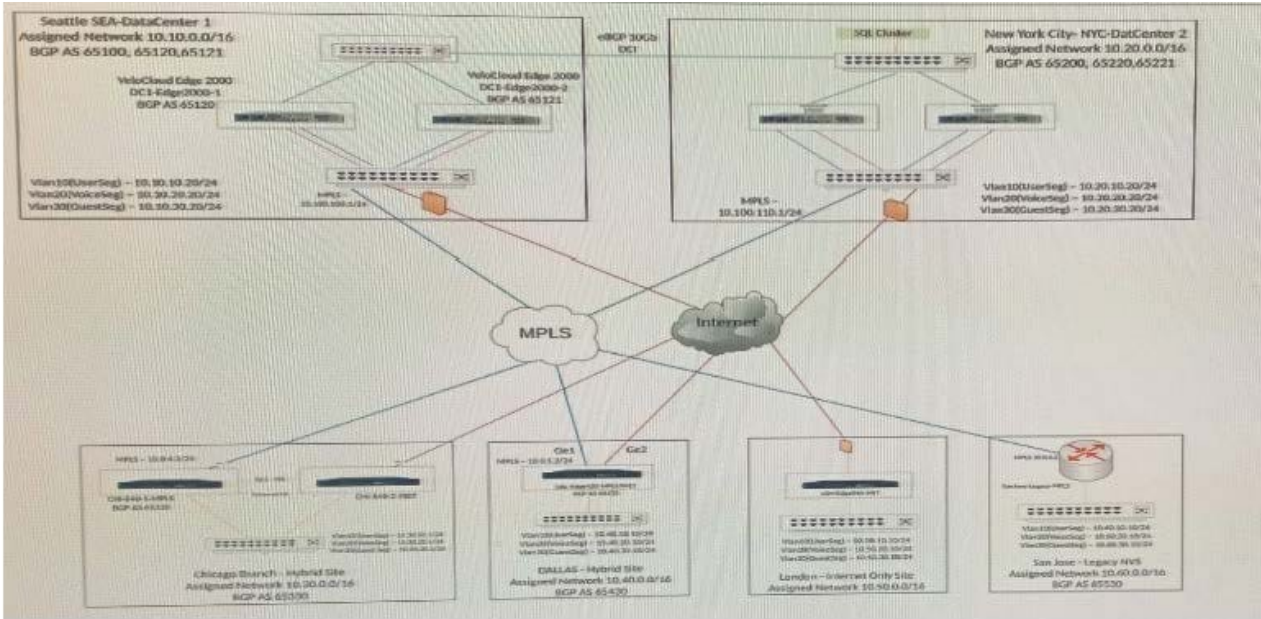
Scenario 1:

The Dallas Branch location is having issues getting activated. The local network administrator is aware that the Edge device received a DHCP address and was able to connect to the internet. The Orchestrator is reporting the Edge as Down. No other changes were made post activation.

A network administrator is tasked with enabling SD-WAN at three branch locations. A topology has been provided for reference. For each site, the administrator is having issues bringing edges

online, as another administrator has gone ahead and created a configuration ahead of time. The organization has several branch sites. One is an Internet-only site and two are Hybrid locations with both internet and MPLS. The last location is MPLS only. There are hub data center locations in this environment as well. Please refer to the topology.

Refer to the Exhibit(s).



Interface Settings

Actions	Interface	Mode	VLANs	Addressing	WAN Overlay	Segment	IGMP	PIM	VNF Insertion
✎	LAN1	Access	1 - Corporate			Global Segment			
✎	LAN2	Access	1 - Corporate			Global Segment			
✎	LAN3	Access	1 - Corporate			Global Segment			
✎	LAN4	Access	1 - Corporate			Global Segment			
✎	LAN5	Trunk	1 - Corporate 10 - UserSeg 20 - VoiceSeg 30 - GuestSeg			Global Segment Global Segment Global Segment Global Segment			
✎	LAN6	Access	1 - Corporate			Global Segment			
✎	LAN7	Access	1 - Corporate			Global Segment			
✎	LAN8	Access	1 - Corporate			Global Segment			
✎	GE1	Access	1 - Corporate	Static IP: 10.0.0.200 Gateway: 192.0.5.1	↓ User Defined	all segments			✎
✎	GE2	Access	1 - Corporate	DHCP	↓ User Defined	all segments			✎
✎	SFP1	Access	1 - Corporate	DHCP	≡ Auto Detect	all segments			✎
✎	SFP2	Access	1 - Corporate	DHCP	≡ Auto Detect	all segments			✎
✎	WLAN1	WiFi	1 - Corporate			Global Segment			
✎	WLAN2	WiFi	Interface disabled						

View the recommended method to configure interfaces at the profile and edge level.

WAN Settings

Type	Name	Interfaces	Link Type	Public IP	Alerts
↓ User Defined	INET	GE1	Public Wired		✎
↓ User Defined	MPLS	GE2	Private Wired		✎

What is the cause of this issue?

- A. The activation link did not specify the updated image location requiring the Edge to be re-activated.
- B. The activation link did not contain any post-activation configuration to allow the Orchestrator to communicate with the Edge.
- C. The Edge will be offline for about 4 hours until it has completed the factory image installation.
- D. The activation link contained incorrect configurations for WAN overlays and WAN interfaces.

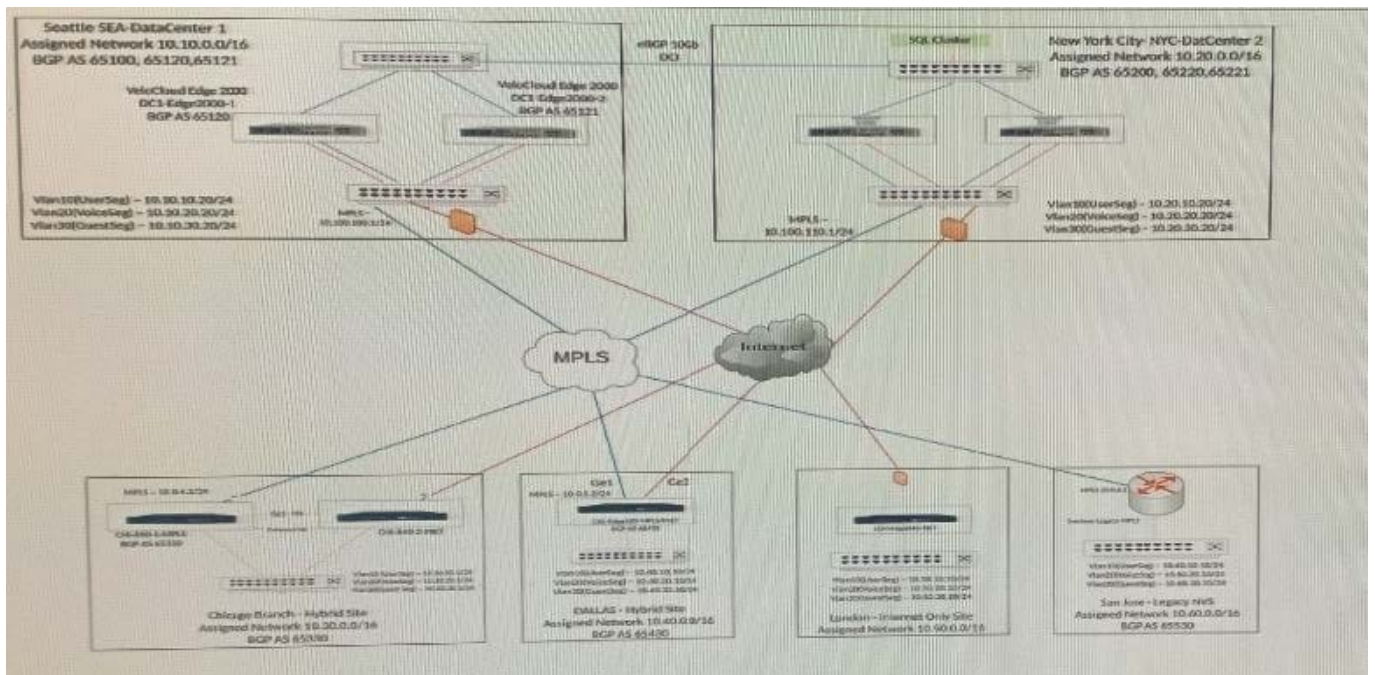
Correct Answer: A

QUESTION 5

Scenario 2:

After completing the branch activation activities for all required branches, the network administrator attempts to test connectivity between the various branches and between the hubs and branches. The administrator notices a lack of connectivity despite being certain that configurations have been complete. The administrator also observed that several users are reporting intermittent connectivity to some of the applications they are accessing. Other users are reporting no access to these applications. Other users at some of the branches claim they cannot get to certain public resources. The administrator wants to ensure that all sites can talk to each other and all resources are accessible.

Exhibit.



A business policy is created and saved.

How can the network administrator verify the business policy is working?

- A. Select a VCE > Test and Troubleshoot > Remote diagnostics and select List Active flows and check the flows to see what Business policy is applied under the Business policy column.
- B. Executing Route table dump under VCE > Test St Troubleshoot > Remote Diagnostics and select Route Table dump and look for business policy applied in the Route table Dump stats.
- C. Check under Monitor > Applications tab and check the listing of applications at the bottom of the screen and the category of the type of traffic there.
- D. Check under the Monitor > Business Priority tab for Business policy statistics.

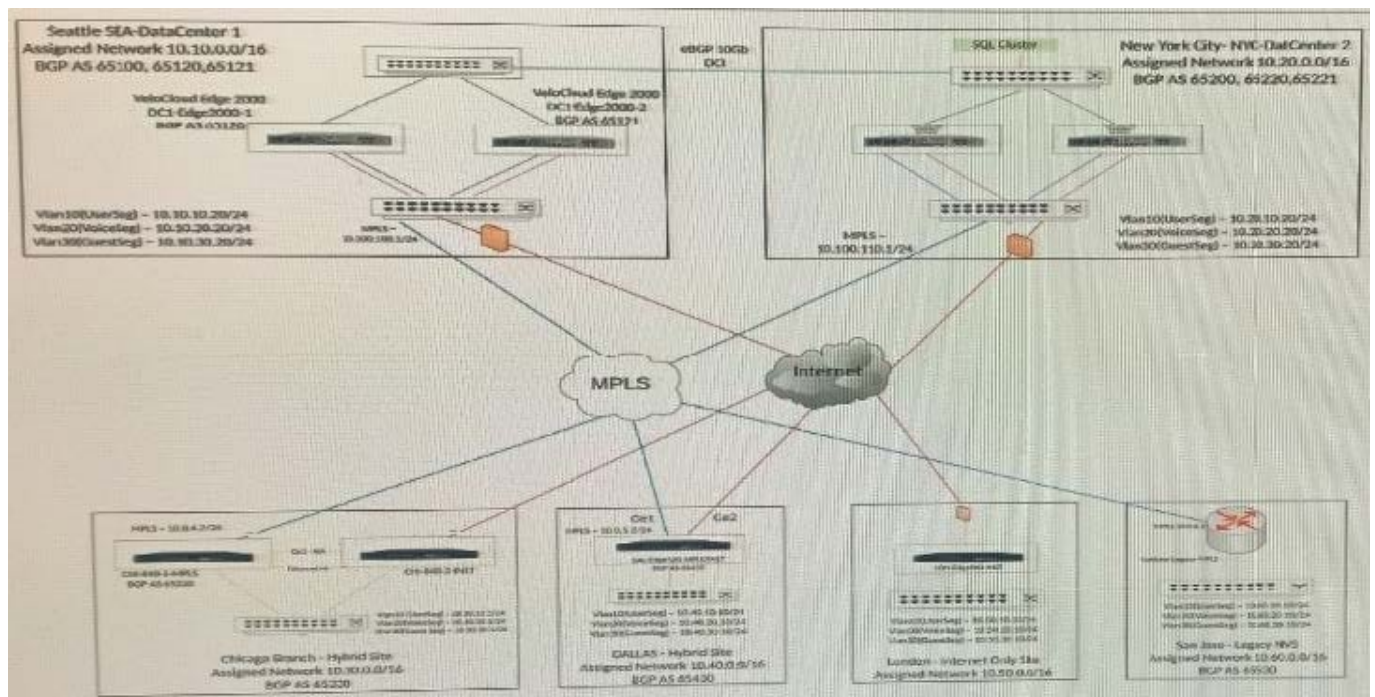
Correct Answer: B

QUESTION 6

Scenario 3:

After completing the branch activation activities for all required branches, the network administrator attempts to test connectivity between the various branches and between the hubs and branches. The administrator notices a lack of connectivity despite being certain that configurations have been complete. The administrator also observed that several users are reporting intermittent connectivity to some of the applications they are accessing. Other users are reporting no access to these applications. Other users at some of the branches claim they cannot get to certain public resources. The administrator wants to ensure that all sites can talk to each other and all resources are accessible.

Exhibit.



The network administrator determines that dynamic routes to SD-WAN sites are missing at the San Jose branch router. The network administrator decides to look into the configurations of hub Edges. All SD-WAN branch sites must use a hub to communicate with the San Jose site. Best practices have been implemented at these SD-WAN sites.

Where should the administrator check first to verify if the configuration is correct?

- A. Verify that the NVS feature is enabled in Cloud VPN.
- B. Verify that redistribution between the primary hub site and San Jose is enabled.
- C. Verify the static routes to San Jose from all Branches are configured.
- D. Verify that redistribution at the Dallas Hybrid Site is enabled for San Jose to use as a peering point.

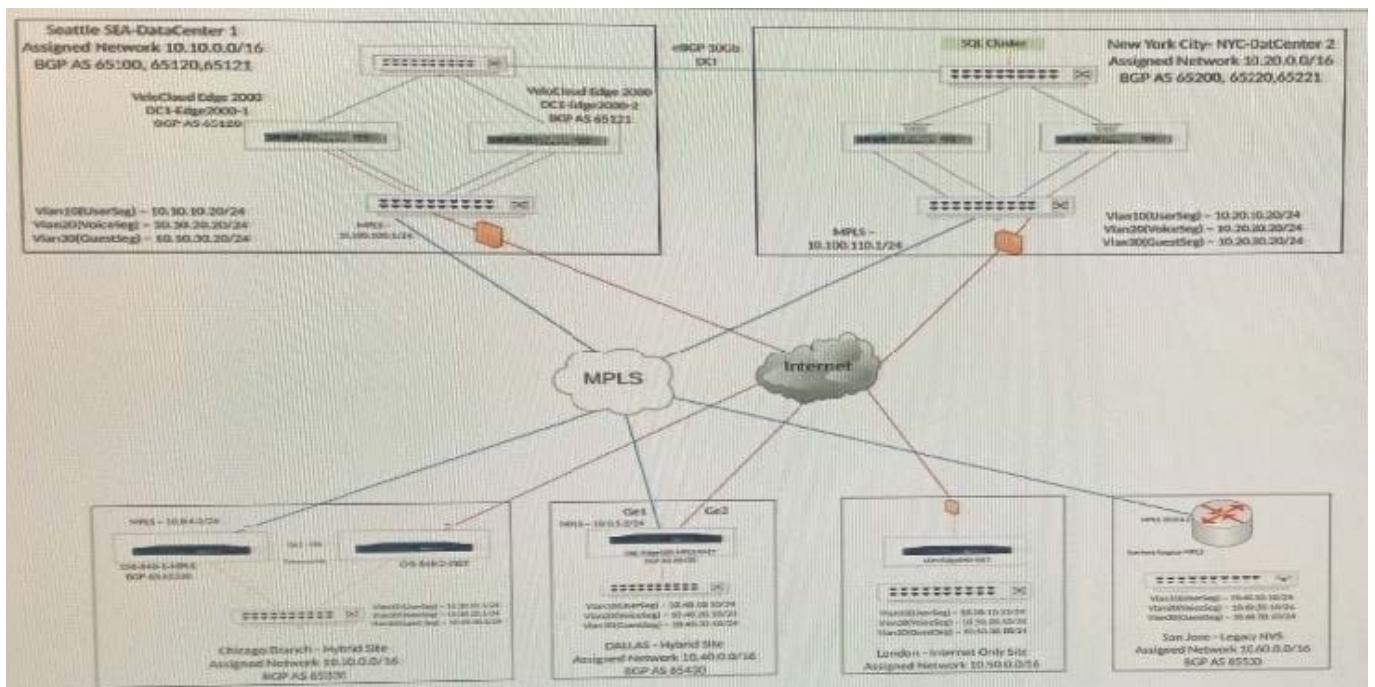
Correct Answer: C

QUESTION 7

Scenario 2:

After completing the branch activation activities for all required branches, the network administrator attempts to test connectivity between the various branches and between the hubs and branches. The administrator notices a lack of connectivity despite being certain that configurations have been complete. The administrator also observed that several users are reporting intermittent connectivity to some of the applications they are accessing. Other users are reporting no access to these applications. Other users at some of the branches claim they cannot get to certain public resources. The administrator wants to ensure that all sites can talk to each other and all resources are accessible.

Exhibit.



When checking connectivity from the San Jose branch, all users report that they can reach certain resources at the main data center. They are unable to reach locations elsewhere. The network administrator investigates and first looks at the Overlay Flow Control (OFC) Table.

What should the network administrator look for next to determine what the issue might be?

- A. Check with the local network administrator to see if the routes for the SD-WAN sites are present in San Jose's branch router.
- B. Check Test and Troubleshoot and review a route table dump of the NY hub site.
- C. Check the Global Segment Configuration to see if it has the Routing Flag enabled.
- D. Determine if OSPF has been configured on the MPLS Routers at the hub.

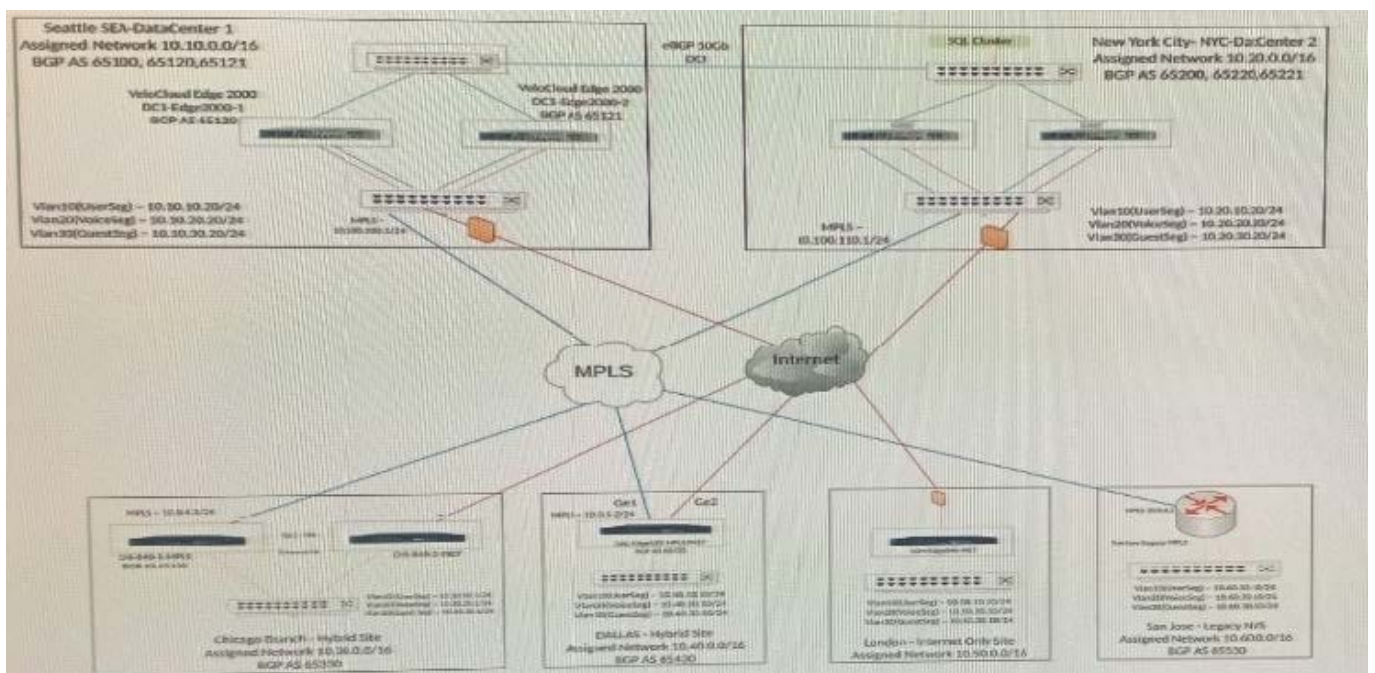
Correct Answer: C

QUESTION 8

Scenario 2:

After completing the branch activation activities for all required branches, the network administrator attempts to test connectivity between the various branches and between the hubs and branches. The administrator notices a lack of connectivity despite being certain that configurations have been complete. The administrator also observed that several users are reporting intermittent connectivity to some of the applications they are accessing. Other users are reporting no access to these applications. Other users at some of the branches claim they cannot get to certain public resources. The administrator wants to ensure that all sites can talk to each other and all resources are accessible.

Exhibit.



The tunnel from spoke to hub is not coming up. What are the two possible reasons? (Choose two.)

- A. Spoke Edge and hub Edge are two different Edge models.
- B. Spoke Edge and hub Edge have a mismatch certificate authentication mode.
- C. Hub WAN Interface might be behind the NAT Device or firewall.
- D. Dynamic Branch to Branch is not enabled.

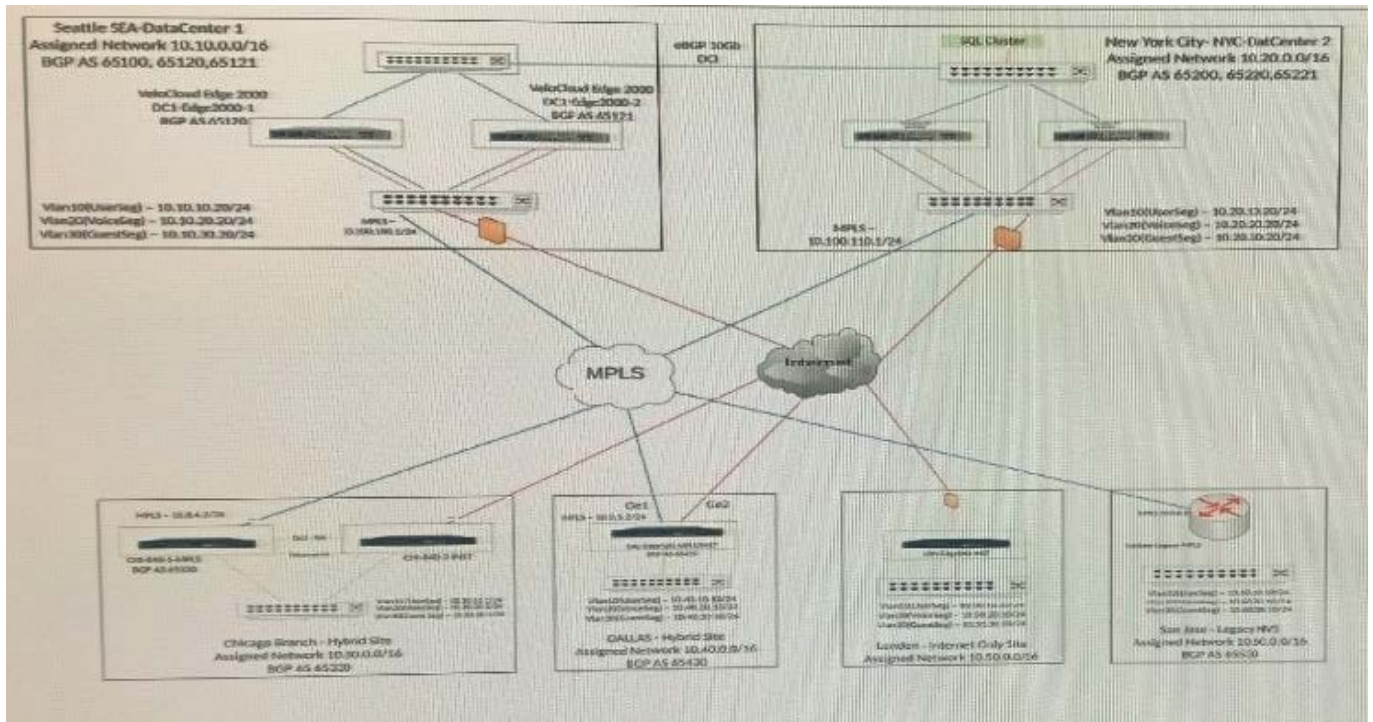
Correct Answer: BC

QUESTION 9

Scenario 2:

After completing the branch activation activities for all required branches, the network administrator attempts to test connectivity between the various branches and between the hubs and branches. The administrator notices a lack of connectivity despite being certain that configurations have been complete. The administrator also observed that several users are reporting intermittent connectivity to some of the applications they are accessing. Other users are reporting no access to these applications. Other users at some of the branches claim they cannot get to certain public resources. The administrator wants to ensure that all sites can talk to each other and all resources are accessible.

Exhibit.



Users at the London site are complaining of various intermittent issues around websites not loading, or applications being remotely accessed disconnecting sporadically and reconnecting after a few minutes. The network administrator does not see anything strange on the Edge overview page and decides to check if the CPU or memory have been hitting close to 100?

Where should the administrator verify this information?

- A. In the VCO > Test 8c Troubleshoot > Remote Diagnostics > System Status
- B. In the VCO > Monitor > Click London_Site01 > Click the System Tab
- C. In the VCO > Remote Troubleshooting > Remote Actions > System Status
- D. In the VCO > Monitor > Alerts

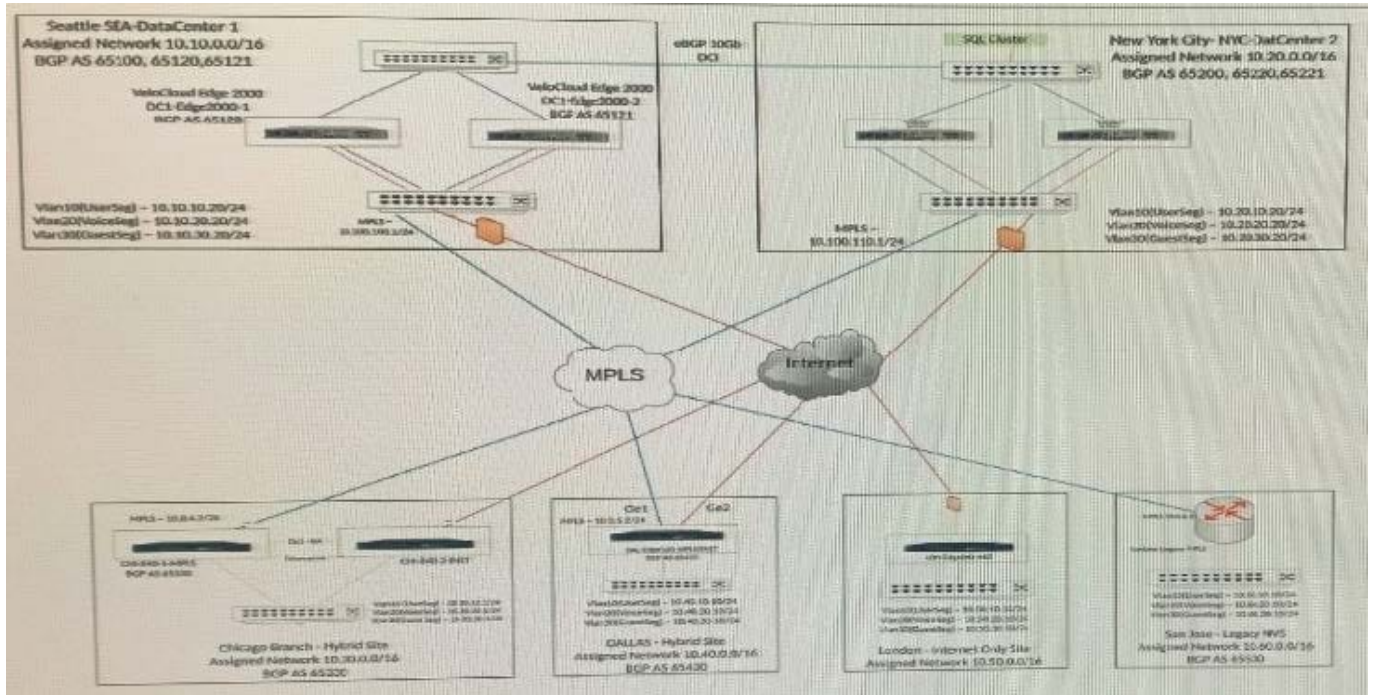
Correct Answer: B

QUESTION 10

Scenario 2:

After completing the branch activation activities for all required branches, the network administrator attempts to test connectivity between the various branches and between the hubs and branches. The administrator notices a lack of connectivity despite being cert configurations have been complete. The administrator also observed that several reporting intermittent connectivity to some of the applications they are accessing. Other users are reporting no access to these applications. Other users at some of the branches claim they cannot get to certain public resources. The administrator wants to ensure that all sites can talk to each other and all resources are accessible.

Exhibit.



A network administrator has been told that Dallas needs some high-availability in the event that the SDWANJ Edge goes offline for whatever reason. There is limited budget so the administrator must use the other available CE router as a fallback mechanism. The administrator will use VRRP to provide HA. When configuring VRRP, the SD-WAN Edge service restarted.

What caused this behavior?

- A. The administrator failed to specify the Edge Type as a VeloCloud Cluster.
- B. This is an expected behavior.
- C. The device is faulty and will need a replacement.
- D. The administrator failed to specify the Edge Type as a VeloCloud Active Standby Pair.

Correct Answer: B