



70-246^{Q&As}

Monitoring and Operating a Private Cloud with System Center 2012

Pass Microsoft 70-246 Exam with 100% Guarantee

Free Download Real Questions & Answers **PDF** and **VCE** file from:

<https://www.lead4pass.com/70-246.html>

100% Passing Guarantee
100% Money Back Assurance

Following Questions and Answers are all new published by Microsoft
Official Exam Center

-  **Instant Download** After Purchase
-  **100% Money Back** Guarantee
-  **365 Days** Free Update
-  **800,000+** Satisfied Customers





QUESTION 1

You need to create an object that meets the incident management requirement after all the planned System Center 2012 R2 servers are deployed. Which type of object should you use?

- A. A VMM service template
- B. An Orchestrator runbook
- C. A Windows PowerShell script
- D. A Service Manager workflow

Correct Answer: D

QUESTION 2

Your company has a private cloud that is managed by using a System Center 2012 infrastructure.


The network contains an Operations Manager infrastructure and a Virtual Machine Manager (VMM) infrastructure.

The private cloud contains a clustered VMM solution that has two virtualization hosts.

The VMM solution hosts seven virtual machines.

The virtual machines are configured as shown in the following table.

Virtual machine name	Virtualization host name	Host CPU utilization
VM1	Server1	20 percent
VM2	Server1	20 percent
VM3	Server1	30 percent
VM4	Server1	20 percent
VM5	Server2	20 percent
VM6	Server2	20 percent
VM7	Server2	20 percent



You configure Dynamic Optimization to use the following settings:

A CPU Dynamic Optimization threshold of 30 percent

A CPU host reserve threshold of 15 percent

Low aggressiveness



You monitor the VMM solution and discover that the virtual machines rarely migrate from Server1 to Server2 when CPU utilization exceeds the configured threshold.

You need to increase the likelihood of the virtual machines migrating from Server1 to Server2 when CPU utilization exceeds the configured threshold.

What should you do?

A.

set the Aggressiveness to High.

B.

Enable Power Optimization.

C.

Configure a host profile.

D.

Modify the CPU host reserve threshold.

Correct Answer: A

<http://blogs.technet.com/b/scvmm/archive/2011/05/04/dynamic-optimization-and-poweroptimization-in-scvmm-2012.aspx> Good post here:

What have you configured regarding the dynamic optimization? How aggressive is the threshold for optimizing your cluster? First of all, you must check the option "Automatically migrate virtual machines to balance load".

Second, specify how aggressive the optimization should be. The more aggressive, the more likely to live migrate VMs even for small gain. Last, you can also configure the resource threshold for when optimization should kick in.

Default it's set to 30% CPU and 512 MB RAM.

To test and verify, right click on your cluster, and click "optimize hosts". VMM will check if it's anything to gain, on demand, and eventually live migrate VMs to balance the load.

<http://social.technet.microsoft.com/Forums/enUS/virtualmachinmgrhyperv/thread/45dfd50da2a4-4a7a-9c88-53fd7cedda77>

QUESTION 3

Your company has a private cloud that is managed by using a System Center 2012 infrastructure.

You discover that several users create incidents for the same issue by using the Self-Service Portal.

Over 100 incidents are created.

You need to ensure that all of the incidents can be resolved as quickly as possible.

What should you do?



- A. create a service level objective (SLO).
- B. Create a queue.
- C. Select the Link to New Parent Incident task.
- D. Select the Escalate or Transfer the Incidents task.

Correct Answer: C

<http://wwwco1vip.microsoft.com/downloads/en/details.aspx?FamilyID=01f0792d-f246-4549-a200-53001865495b> How to Create a Parent Incident from an Incident Form In SystemCenter2012-ServiceManager, one way a help desk analyst can create a parent incident is when an existing incident is already opened.

You can create a parent incident using the following steps.

A parent incident serves as a container for several incidents. The following procedure is performed on an incident that is neither a parent incident nor a child incident.

Afterward, a new parent incident is created and the existing incident is converted to a child incident. To create a parent incident from an incident form

1.
In the Service Manager console, open the Work Items workspace, and in the Work Items pane, expand Incidents.
2.
Select any Incident Management view that contains active incidents, and then select an incident.
3.
In the Tasks pane, click Edit to open the incident.
4.
In the Tasks pane, click Link to New Parent Incident to open the Link to New Parent Incident dialog box.
5.
In the Link to New Parent Incident dialog box, select a template to create the new parent incident with, and then click OK.
For example, select Networking Issue Incident Template, and then click OK.
6.
In the Title box, type a new description or modify the description that is inserted by the template.
For example, type Network Outage in Bldg 773.
7.
In the Affected user box, select the user who reported this incident.
For example, select Joe Andreshak.



8.

In the Alternate Contact Method box, enter additional contact information for the affected user (optional).

9.

The Child Incidents tab appears in the form where you view the child incident that the new parent incident is grouped with and where you can add other child incidents.

10.

In the parent incident form, click OK to close it.

11.

In the original incident form, click OK to close it.

QUESTION 4

Your company has a private cloud that is managed by using a System Center 2012 infrastructure. The network contains an Operations Manager infrastructure and a Virtual Machine Manager (VMM) infrastructure.

You implement a Microsoft SharePoint Server 2010 farm that is hosted on 10 virtual machines.

The company defines a service level agreement (SLA) for the farm's availability of at least 99.9 percent uptime.

You need to ensure that the company's compliance officer can identify whether the SLA requirement is met.

What should you do?

- A. Create a group, and then add all of the farm servers to the group. Create a Service Level Tracking object. Add a service level objective (SLO), and then set the goal to 99.9 percent.
- B. Create a group, and then add all of the farm servers to the group. Create a performance collection rule for each front-end Web server in the farm. Configure an alert if network availability falls below 99.9 percent.
- C. Create a distributed application that contains the servers and the services used by the farm. Create a Service Level Tracking object for the distributed application. Add a service level objective (SLO), and then set the goal to 99.9 percent.
- D. Create a distributed application that contains the servers and the services used by the farm. Create a performance collection rule for each front-end Web server in the farm. Configure an alert if network availability falls below 99.9 percent.

Correct Answer: C

<http://technet.microsoft.com/en-us/library/hh230719> <http://technet.microsoft.com/en-us/library/hh457612.aspx>

QUESTION 5

You need to implement a solution to meet the monitoring requirements for App1. Which template should you use?

- A. TCP Port



- B. Web Application Transaction Monitoring
- C. Windows Service
- D. Process Monitoring

Correct Answer: B

QUESTION 6

You need to recommend a solution to implement the planned changes for the research department. What should you include in the recommendation?

- A. Two VMM library shares
- B. One host profile
- C. Two application profiles
- D. One virtual machine template

Correct Answer: D

QUESTION 7

Your company has a private cloud that is managed by using a System Center 2012 infrastructure.

A server named Server1 hosts the System Center 2012 Service Manager management server.

A server named Server2 hosts the System Center 2012 Orchestrator management server.

You plan to use a runbook named Runbook1 to update the status of Service Manager incidents.

You need to ensure that you can create Runbook1, and then reference the runbook in Service Manager.

What should you do? (Each correct answer presents part of the solution. Choose all that apply.)

- A. From the Service Manager Console, add an incident event workflow.
- B. From the Service Manager Shell, run the Update-SCSMWorkflow cmdlet.
- C. From the Service Manager Console, create an Orchestrator connector.
- D. From the Orchestrator Deployment Manager, register the Integration Pack for System Center Service Manager.
- E. From the Service Manager Console, update the Problem Status list.
- F. From the System Center 2012 Orchestrator Runbook designer, create a connection.

Correct Answer: BCD

Just a draft:



Install the integration pack for SCSM on Orchstrator and configure the connection settings (SCSM server name, User, Password) Create a new runbook First activity -> "Monitor Object" of SCSM integration pack -> Incident Class -> On

Update -> Filter "Support Group" not equal "Tier 1" Add 6 "Send Email" activities -> 6 different recipients -> add the text in each mail body Link all 6 "Send Email" activities with the first "Monitor Object" activity On each link delete the default

rule "On success" Add a new criteria -> Choose the "Support Group" from the data bus ->criteria of the first link "Support Group" equals "Tier 2"

Do the same with the other Links and Support Groups.

Check in and start the runbook

Reference:

<http://social.technet.microsoft.com/Forums/en/administration/thread/ea41a3a4-0b40-47ee-9ecc-a2ecab8794bf>

QUESTION 8

Your company has a private cloud that is managed by using a System Center 2012 infrastructure.

You have a web application named App1 that is hosted in another datacenter. The datacenter is not part of the private cloud. You need to ensure that Service Manager incidents are generated automatically when App1 is unavailable.

What should you create?

- A. A channel
- B. A Service Level Tracking object
- C. A synthetic transaction
- D. An event subscription

Correct Answer: C

To monitor the application that runs on these traditional platforms we leverage custom MP\'s, synthetic transactions to be able to test websites, and HTTP probes to test web services ensuring that the outside-in functionality of the application is available. <http://blogs.technet.com/b/server-cloud/archive/2012/03/29/using-system-center-2012-to-monitortheinfrastructure-amp-application-layers-for-private-public-and-traditional-environments.aspx>

QUESTION 9

You need to recommend a solution for the application servers. The solution must meet the technical requirements. What should you create?

- A. A protection group that contains all of the application servers
- B. A protection group that contains all of the Hyper-V hosts
- C. A separate protection group for each application owner
- D. A separate protection group for each application server



Correct Answer: D

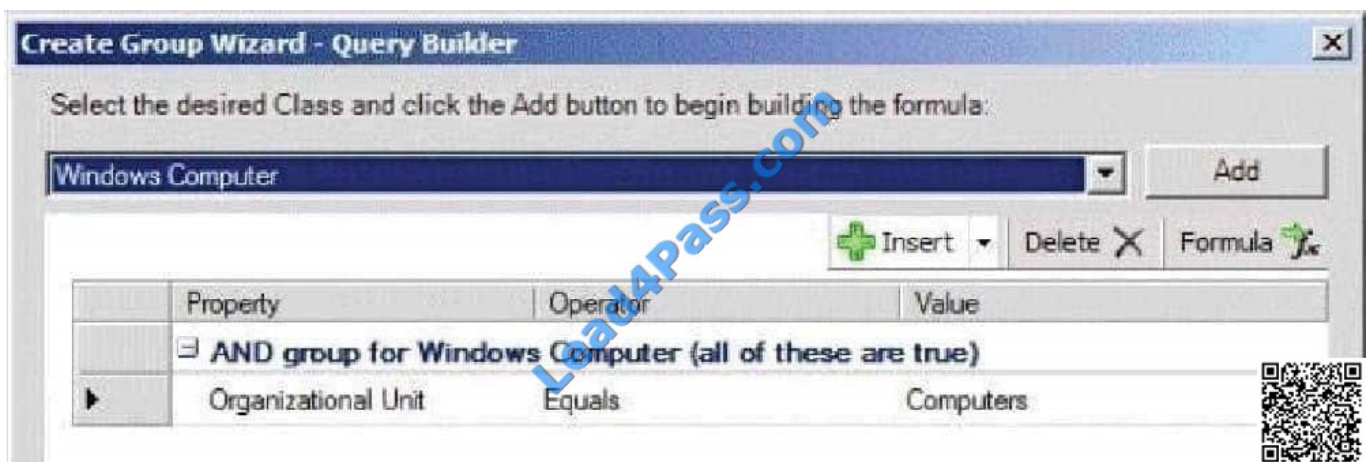
QUESTION 10

Your company has a private cloud that is managed by using a System Center 2012 Operations Manager infrastructure.

The network contains an Active Directory forest named adatum.com. Operations Manager monitors a server named Operations1.

Operations1 has a computer account in an organizational unit (OU) name ServerOU1.

You create a group named GP1 as shown in the exhibit. (Click the Exhibit button.)



You create a rule named OMRule1 that generates an alert when an error is added to the Application log.

You target OMRule1 to GP1.

You discover that alerts fail to be generated when errors are added to the Application log on Operations1.

You need to ensure that an alert is generated when an error is added to the Application log on Operations1.

What should you modify?

- A. the target of OMRule1
- B. the dynamic membership of GP1
- C. the category of OMRule1
- D. the explicit membership of GP1

Correct Answer: B

How does a rule get to an agent?

For any particular rule/monitor, OpsMgr will enumerate all instances of the target class and apply the rule to each. If there are no instances of the target class on a particular agent, then the rule will do nothing.

It's that simple.



If I can't target groups, why are they listed when I select a target for a rule? Groups are classes just like any other.

They're singleton classes where the class and the instance are one and the same, but they are classes nonetheless which is why they show up in the list with all other classes.

There are really very few circumstances where you will target a rule at a group though.

What if I do target a group?

You can apply a rule/monitor directly to a group, but it will execute against the group object itself.

OpsMgr will not enumerate members of the group and apply the rule to each. Any rules targeted at groups will actually operate on the Root Management Server since groups have no host and unhosted objects are managed by the RMS.

How do I target some group of objects then?

To the specific question of how to get a particular rule/monitor to a subset of components, you have two basic options. Let's say for example, you have a particular subset of web sites that you need a particular rule to apply.

You could target that rule at the IIS 2003 Web Site class for example, but that would apply the rule to all instances of that class. It would probably apply to sites that you didn't want. Option 1 would be to create a new class and target the rule

at the class. In the case of an IIS site, this would mean that you would need to go to the Authoring Console or raw XML and create a new class and discovery. That's a more advanced solution that most customers will do and probably overkill

anyway. Option 2 is the create a rule target at the whole class and disable it. Create a group with the sites you want and create an override for that group to enable your rule. This might sound like a workaround, but it's a completely valid solution.

How do I know if I'm selecting the right target?

The easiest method to validate you are using a target that actually has instances is to use the Discovered Inventory view in the Operations Console prior to creating your rule/monitor. In the Actions pane is an option called "Change target

type..." that will bring up the same Select a Target Type dialog box that you see when you select the target for a rule/monitor. This view will list all instances of the target class you select. You can validate which agents have an instance of that

class and how many instances each has. If there are no instances listed, then the rule isn't going to do anything. If there are instances, then you not only be confident that the rule/monitor will execute on the agent, but you can also view the

properties of the instance that will be accessible to any rules/monitors targeted at it.

<http://blogs.technet.com/b/brianwren/archive/2007/08/22/targeting-rules-and-monitors.aspx> NOTE: The text below was copied from a duplicate question [https:// social.technet.microsoft.com/wiki/contents/articles/7205.operations-managerdynamicgroup-examples.aspx](https://social.technet.microsoft.com/wiki/contents/articles/7205.operations-managerdynamicgroup-examples.aspx)

Operations Manager Dynamic Group Examples

In Operations Manager, groups are logical collections of objects, such as Windows-based computers, hard disks, or instances of Microsoft SQL Server. Groups are populated by explicitly adding objects to the group or dynamically according



to criteria you set. For more information on the use of groups, see *Creating and Managing Groups in the Operations Guide*.

This article provides example of group definitions.

The examples describe the items to select in the Query Builder and the resulting formula:

Create Group Wizard - Query Builder

Select the desired Class and click the Add button to begin building the formula:

Windows Computer [Add]

[+ Insert] [Delete X] [Formula]

Property	Operator	Value
AND group for Windows Computer [all of these are true]		
Organizational Unit	Equals	Domain Controllers

Dynamic Inclusion Rules (optional)

Use a formula to populate group membership.

[Create/Edit rules...]

Query formula:

(Object Is Windows Computer AND (Organizational Unit Equals Domain Controllers) AND True)

QUESTION 11

You need to recommend an automated solution to resolve the ticket generation issue.

What should you include in the recommendation?

- A. From Operations Manager, create diagnostic tasks. From Orchestrator, create runbooks that forward alerts to the help desk application.
- B. From Service Manager, create a connector. From Operations Manager, configure the connector.
- C. From Service Manager, create a connector. From Orchestrator, configure connectors.
- D. From Operations Manager, create diagnostic tasks. From Orchestrator, configure connectors.

Correct Answer: B



QUESTION 12

You need to ensure that the self-service users and the administrators can deploy virtual machines. The solution must meet the technical requirements.

What should you create?

- A. Two VMM library shares
- B. One host profile
- C. Two application profiles
- D. One virtual machine template

Correct Answer: D

QUESTION 13

Your company has a private cloud that is managed by using a System Center 2012 infrastructure.

You install the servers shown in the following table.

The company's compliance department identifies the following tasks that must be performed:

Back up individual files from VM1.

Back up the configuration settings of VM1.

Restore the configuration settings of VM1.

Restore individual files from VM1 to an alternate location.

The compliance department administrators recommend installing the DPM agent on Server1, and then performing a full backup.

You need to identify which task is NOT met by the recommended solution.

Which task should you identify?

- A.
Restore individual files from VM1 to an alternate location.
- B.
Restore the configuration settings of VM1.
- C.
Back up the configuration settings of VM1.
- D.
Back up individual files from VM1.



Correct Answer: B

In the event of disaster recovery, System Center Data Protection Manager (DPM) 2010 allows you to recover virtual machines as files to a network folder. You can then copy those files to an alternate Hyper-V host server. However, to start a virtual machine on an alternate Hyper-V host server, you have to manually create and configure the virtual machine using the recovered files. DPM 2010 supports alternate location recovery (ALR), which allows you to recover a Hyper-V virtual machine to an alternate stand-alone Hyper-V host or to a cluster. The recovered virtual machine is already registered and configured on an alternate Hyper-V host server.

<http://technet.microsoft.com/en-us/library/ff634209.aspx> In a virtualized environment the issue is whether to backup from inside the guest or from the host. The latter provides "bare metal restore" of an entire VM where something's gone catastrophically wrong with a VM (or the host) but in general it doesn't provide granular restore of files / folders. DPM 2010 added Item Level Restore (ILR), allowing you to restore individual files or folders within a VM even though it had only been backed up from the host. But this capability was only available when DPM 2010 ran on physical hardware, if the DPM server itself was in a VM this capability was not available. DPM 2012 fixes this glitch and can now do ILR even when the DPM server is a VM. <http://4sysops.com/archives/dpm-2012-part-3-other-improvements/>

QUESTION 14

You need to recommend a solution to meet the technical requirements for MP1.

What should you include in the recommendation? (More than one answer choice may achieve the goal. Select the BEST answer.)

- A. Aggregate rollup monitors
- B. Event collection rules
- C. Synthetic transactions
- D. Overrides

Correct Answer: D

QUESTION 15

Your company has a private cloud that contains a System Center 2012 infrastructure. The network contains a Service Manager infrastructure and an Orchestrator infrastructure.

You plan to configure the private cloud to meet the following requirements:

Integrate runbooks to Service Manager requests.

Automate administration tasks by using runbooks.

Provide end users with the ability to perform administrative tasks.

You need to configure the private cloud to meet the requirements.

What should you do from Service Manager?

- A. Register the Orchestrator Integration Packs.



- B. Select the sync folder for the Orchestrator connector.
- C. Create an Exception Management Workflow.
- D. Register a data source.

Correct Answer: A

QUESTION 16

Your company has a private cloud that is managed by using a System Center 2012 infrastructure.

The network contains 50 virtual machines that run Windows 7.

Each virtual machine has an application named Appl.exe installed.

A new version of Appl.exe is released.

You need to identify which virtual machines have the outdated version of App1.exe installed.

What should you do?

- A. From Operations Manager, create a monitor.
- B. From Configuration Manager, deploy a Desired Configuration Management baseline.
- C. From Service Manager, create a Virtual Machine Manager (VMM) connector.
- D. From Virtual Machine Manager (VMM), deploy a service template.

Correct Answer: B

Desired configuration management in Configuration Manager 2007 allows you to assess the compliance of computers with regard to a number of configurations, such as whether the correct Microsoft Windows operating system versions are installed and configured appropriately, whether all required applications are installed and configured correctly, whether optional applications are configured appropriately, and whether prohibited applications are installed. Additionally, you can check for compliance with software updates and security settings. <http://technet.microsoft.com/en-us/library/bb680553.aspx>

QUESTION 17

You need to recommend which object must be monitored from Operations Manager to identify how the memory of VM1 is assigned.

Which object should you include in the recommendation?

- A. Memory
- B. A Hyper-V Hypervisor Root Partition
- C. A Hyper-V Hypervisor Partition



D. A Hyper-V VM Vid Partition

Correct Answer: D

QUESTION 18

You need to recommend a management pack template to monitor the web applications that run on the Windows servers. Which management pack template should you recommend?

- A. Web Application Transaction Monitoring
- B. .NET Application Performance Monitoring
- C. TCP Port
- D. Process Monitoring

Correct Answer: A

QUESTION 19

Your role of Systems Administrator at ABC.com includes the management of the company's private cloud.

The private cloud is hosted on an internal System Center 2012 infrastructure.

Operations Manager (SCOM) is used to monitor the servers in the private System Center 2012 cloud.

An SCOM monitor targets all the servers in the private cloud.

You want to create an override for the monitor to target only the servers that have a specific application installed.

A registry value is used to identify the servers with the application installed.

Which two of the following should you create to use with the override? (Choose two).

- A. A Dynamic Group
- B. A Static Group.
- C. A Workflow.
- D. A Task.
- E. An Attribute.

Correct Answer: AE

AE additionally, here is a decent write-up of a similar scenario...

<http://blogs.technet.com/b/kevinholman/archive/2009/06/10/creating-custom-dynamic-computer-groups-based-on-registry-keys-on-agents.aspx>



QUESTION 20

You need to recommend a solution to implement the planned changes for the research department. What should you include in the recommendation?

- A. The existing VMM infrastructure
- B. The existing Service Manager infrastructure
- C. A solution that includes System Center 2012 App Controller
- D. The existing Orchestrator infrastructure

Correct Answer: A

QUESTION 21

Your network contains an Active Directory domain named contoso.com. The domain contains a domain controller named DC1 and member servers named Server1 and Server2. Server1 has System Center 2012 R2 Operations Manager

installed. Server2 has System Center 2012 R2 Orchestrator installed. Orchestrator has the System Center Integration Pack for System Center 2012 R2 Operations Manager installed.

In Operations Manager, you have a monitor named Monitor1 that triggers an alert named Alert1. You need to ensure that when Alert1 is triggered, a custom runbook starts.

Which two actions should you perform from Orchestrator? Each correct answer presents part of the solution.

- A. Configure a filter of PrincipalName equals Alert1.
- B. Configure a filter of MonitorObjectName equals Monitor1.
- C. Add the Get Alert activity.
- D. Add the Monitor Alert activity and configure triggers for the alert.
- E. Configure a filter of Name equals Alert1.

Correct Answer: BD

<http://technet.microsoft.com/en-us/library/hh830707.aspx>

QUESTION 22

You need to recommend a solution to implement the changes for the incident impact value.

What should you recommend doing from the Service Manager console?

- A. From the Library workspace, edit a template.
- B. From the Library workspace, edit a list.



- C. From the Work Items workspace, edit a view.
- D. From the Administration workspace, edit the Settings.

Correct Answer: B

QUESTION 23

Your company has a private cloud that is managed by using a System Center 2012 Operations Manager infrastructure.

You have a distributed application named App1. App1 has the following service level objectives (SLOs):

At least 99.9 percent uptime

No more than 85 percent average CPU utilization

You need to add the SLOs that monitor the required information to Service Level Tracking.

Which SLO or SLOs should you add? (Each correct answer presents part of the solution. Choose all that apply.)

- A. Monitor state SLO - Availability
- B. Monitor state SLO - Security
- C. Collection rule SLO
- D. Monitor state SLO - Performance
- E. Monitor state SLO - Configuration

Correct Answer: AC

<http://technet.microsoft.com/en-us/library/hh230719.aspx>

To define a service level objective for an application Open the Operations console with an account that is a member of the Operations Manager Administrators user role.

Click Authoring.

In the navigation pane, expand Management Pack Objects, and then click Service Level Tracking.

In the Tasks pane, click Create.

In the Service Level Tracking dialog box, type a name for the service level that you are defining. For example, type LOB Application 1. Optionally, you can provide a description. Click Next. On the Objects to Track page, under Targeted class,

click Select.

In the Select a Target Class dialog box, select a class for the service level, such as Distributed Application, from the list in the text box. You can search for a class by typing its name into the Look For text box. Click OK to close the Select a

Target dialog box. You can use the Scope option to specify the scope for the service level. The default selection is to



use all objects of the targeted class.

Select the management pack that this service level will be saved in. You can use an existing management pack or create a new one.

Click Next.

On the Service Level Objectives page, click Add, and then click Monitor state SLO to create a new monitor.

This monitor will track the availability of the application.

Define the state monitor as follows:

In the Service level objective name text box, type a name for the service level objective. For this scenario, type Availability.

From the Monitor drop-down list, choose the specific monitor that you want to use to measure the objective. For this scenario, choose Availability. Using the Service level objective goal (%) spin box, provide the numerical measure for your

objective. For example, select 99.990 to indicate that your goal is 99.99% availability. You can refine what the monitor tracks to determine availability by selecting or clearing any of the following state criteria:

Unplanned maintenance

Unmonitored

Monitoring unavailable

Monitor disabled

Planned maintenance

Warning

Click OK.

On the Service Level Objectives page, click Add, and then click Collection rule SLO to create a new collection rule. This rule will track the performance of the application Define the performance collection rule as follows:

In the Service level objective name: text box, type a name for the service level objective. For this scenario, type Performance. Under Targeted class, click Select to open the Select a Target Class dialog box. Specify the target class for the rule

from the list of targets in the text box. Note that this class must be contained in the distributed application.

For this scenario, select the specific class the rule is targeted to, such as Windows Server 2008 Operating System.

Under Performance collection rule, click Select to open the Select a Rule dialog box. Specify the performance collection rule to use. For this scenario, choose Collect Processor\ % Processor Time performance counter, and then click OK.

Using one of the Aggregation method options, choose one of the following:

Average

Min



Max

Use the Service level objective goal drop-down list to specify either Less than or More than, and enter a value in the adjacent text box. For this scenario, choose Less Than and 80. This indicates that the performance goal is to never exceed

80% processor time.

Click OK.

On the Service Level Objectives page, click Next.

On the Summary page, review the settings, and then click Finish.

When the Completion page appears, click Close.

QUESTION 24

Your company has a private cloud that is managed by using a System Center 2012 infrastructure. You deploy Data Protection Manager (DPM) to a server named DPM1.

A server named Server1 has the Hyper-V server role installed and hosts a virtual machine named VM1.

From DPM1, you perform a full backup of Server1.

You discover that you are unable to restore individual files from VM1.

You need to ensure that you can restore individual files from VM1 by using the DPM Administrator console.

What should you do first?

- A. On VM1, install Windows Server Backup.
- B. On DPM1, install the Hyper-V server role.
- C. On VM1, install the integration features.
- D. On DPM1, attach the VHD of VM1.

Correct Answer: B

Explanation: The integration features are also required but the "first" step according to the link below is to install the Hyper-V role on the DPM server. Ref: <http://technet.microsoft.com/en-us/library/hh758184.aspx>

QUESTION 25

Your company has a private cloud that is managed by using a System Center 2012 infrastructure. The network contains an Operations Manager infrastructure and a Service Manager infrastructure.

You need to configure Service Manager to create incidents automatically based on Operations Manager alerts.

Which object should you create from the Service Manager Console?



- A. A subscription
- B. A queue
- C. An incident event workflow
- D. A connector

Correct Answer: D

QUESTION 26

You need to recommend a solution to meet the monitoring requirements for App1.

What should you recommend?

- A. Install the Management Pack for Operations Manager APM Web IIS 7, download and install the Internet Information Services (IIS) 7 Management Pack, and then run the .NET Application Performance Monitoring wizard.
- B. Configure a synthetic transaction, and then run the Process Monitoring wizard.
- C. Install the Management Pack for Operations Manager APM Web IIS 7, and then run the Process Monitoring wizard.
- D. Configure a synthetic transaction, and then run the .NET Application Performance Monitoring wizard.

Correct Answer: A

QUESTION 27

Your company has a private cloud that is managed by using a System Center 2012 Operations Manager infrastructure.

The network contains several routers and switches.

You open the Network Devices view and discover that a switch is in a critical state.

You need to identify the availability of the switch during the past seven days. The solution must also ensure that you can review which servers are connected to the switch.

What should you use?

- A. The Network Node Dashboard
- B. A diagram view
- C. The Network Vicinity Dashboard
- D. A state view

Correct Answer: A

<http://www.techrepublic.com/blog/networking/using-the-network-dashboard-views-in-scom-2012/5226> Network Node Dashboard View A node is any device connected to a network. Switches and routers are among the most common kinds of nodes you will discover. The node dashboard provides details on the health of a particular device. The upper



portion of the node dashboard consists of the network vicinity view for

that node, as well as "speedometer" gauges for node availability today, yesterday, in the last week, and in the last month.

(Periods of time that were not monitored are counted as "available" in the availability statistics, so newly discovered devices will not appear to have had outages in the gauges.) The lower portion of the node dashboard includes a list of all interfaces on the node that are being monitored.

From this view, you can manually override the automatic selections of which interfaces are monitored by SCOM. Also, by right-clicking on specific interfaces, you can pivot to performance or reporting views that drill down into the near term or long term history of an interface. In Figure B, the Interface Packet Analysis report for "PORT 4 on "switch1 during the previous week appears in a second window.

The screenshot shows the SCOM interface. On the left, a table titled "Health of Interfaces on this Node" lists various interfaces with their states and traffic statistics. The "PORT-4" row is highlighted in blue. A context menu is open over "PORT-4", with "Report Tasks" selected. On the right, a report window titled "Interface Packet Analysis - Operations Manager - Report" is displayed, showing a line graph for "PORT-switch1" with a y-axis ranging from 0 to 250. A yellow arrow points from the "PORT-4" row in the table to the report window.

Interface State	Interface Name	Sent (Bits/sec)	Received (Bits/sec)
✓	PORT-18	21017.5	100144.2
✓	PORT-23	3907.8	278.8
✓	PORT-3	64109.2	117118.8
✓	PORT-14	3696.9	55.8
✓	PORT-16	117710.6	87715.1
✓	PORT-4	1380914.1	954528.8
✓	PORT-17	46863.7	579074.8
○	PORT-12	-	-
○	PORT-10	-	-
○	PORT-24	-	-
○	PORT-13	-	-
○	PORT-7	-	-
○	PORT-21	-	-
○	PORT-6	-	-
○	PORT-22	-	-
○	IF-99	-	-
○	PORT-11	-	-

QUESTION 28

You need to implement the incident management changes.

What should you do?

- A. From Windows PowerShell, run the Update-SCSMWorkflowcmdlet.
- B. From the Service Manager console, add a workflow.
- C. From Windows PowerShell, run the Update-SCSMDCMWorkflowcmdlet
- D. From the Service Manager console, edit an existing workflow.

Correct Answer: D



QUESTION 29

You need to recommend a solution to monitor the UNIX-based web application. What should you include in the recommendation?

- A. The Monitoring Pack for UNIX and Linux Operating Systems
- B. A TCP Port monitor
- C. A Web Application Transaction Monitor
- D. Global Service Monitor

Correct Answer: C

QUESTION 30

You need to recommend which configurations must be performed to meet the requirements for Service3. What should you include in the recommendation?

- A. Configure Global Service Monitor.
- B. Integrate Operations Manager and VMM.
- C. Create a Windows Events monitor.
- D. Create a Windows Performance Counters monitor.

Correct Answer: B

[70-246 Practice Test](#)

[70-246 Study Guide](#)

[70-246 Exam Questions](#)



To Read the [Whole Q&As](#), please purchase the [Complete Version](#) from [Our website](#).

Try our product !

100% Guaranteed Success

100% Money Back Guarantee

365 Days Free Update

Instant Download After Purchase

24x7 Customer Support

Average 99.9% Success Rate

More than 800,000 Satisfied Customers Worldwide

Multi-Platform capabilities - [Windows](#), [Mac](#), [Android](#), [iPhone](#), [iPod](#), [iPad](#), [Kindle](#)

We provide exam PDF and VCE of Cisco, Microsoft, IBM, CompTIA, Oracle and other IT Certifications. You can view Vendor list of All Certification Exams offered:

<https://www.lead4pass.com/allproducts>

Need Help

Please provide as much detail as possible so we can best assist you.

To update a previously submitted ticket:



 <p>One Year Free Update Free update is available within One Year after your purchase. After One Year, you will get 50% discounts for updating. And we are proud to boast a 24/7 efficient Customer Support system via Email.</p>	 <p>Money Back Guarantee To ensure that you are spending on quality products, we provide 100% money back guarantee for 30 days from the date of purchase.</p>	 <p>Security & Privacy We respect customer privacy. We use McAfee's security service to provide you with utmost security for your personal information & peace of mind.</p>
---	---	--

Any charges made through this site will appear as Global Simulators Limited.

All trademarks are the property of their respective owners.

Copyright © lead4pass, All Rights Reserved.