



70-417^{Q&As}

Upgrading Your Skills to MCSA Windows Server 2012

Pass Microsoft 70-417 Exam with 100% Guarantee

Free Download Real Questions & Answers **PDF** and **VCE** file from:

<https://www.lead4pass.com/70-417.html>

100% Passing Guarantee
100% Money Back Assurance

Following Questions and Answers are all new published by Microsoft
Official Exam Center

-  **Instant Download** After Purchase
-  **100% Money Back** Guarantee
-  **365 Days** Free Update
-  **800,000+** Satisfied Customers





QUESTION 1

Your network contains an Active Directory domain named contoso.com. The domain contains a server named Server 1. Server1 runs Windows Server 2012 R2.

You need to create a 3-TB virtual hard disk (VHDX) on Server1.

Which tool should you use?

- A. Computer Management
- B. Server Manager
- C. Share and Storage Management
- D. New-StorageSubsystemVirtualDisk

Correct Answer: A

QUESTION 2

You have a server named Server1 that runs a Server Core Installation of Windows Server 2012 R2. You attach a 4-TB disk to Server1.

The disk is configured as an MBR disk. You need to ensure that you can create a 4-TB volume on the disk.

Which Diskpart command should you use?

- A. Automount
- B. Convert
- C. Expand
- D. Attach

Correct Answer: B

You will need to convert the disk to a GPT since GPT disks allows for partitioning and not MBR disks.

References: Exam Ref 70-410: Installing and Configuring Windows Server 2012: Objective 3.2: Create and Configure virtual machine storage, Chapter 3: p. 159 Exam Ref 70-410: Installing and Configuring Server 2012: Objective 1.3: Installing and Configuring servers, Chapter 1: p. 42-43

QUESTION 3

Your network contains an Active Directory domain named contoso.com.

You install Windows Server 2012 R2 on a new server named Server1 and you join Server1 to the domain.

You need to ensure that you can view processor usage and memory usage information in Server Manager.



What should you do?

- A. From Server Manager, click Configure Performance Alerts.
- B. From Performance Monitor, create a Data Collector Set (DCS).
- C. From Performance Monitor, start the System Performance Data Collector Set (DCS).
- D. From Server Manager, click Start Performance Counters.

Correct Answer: D

You should navigate to the Server Manager snap-in and there click on All Servers, and then Performance Counters. The Performance Counters, when started can be set to collect and display data regarding processor usage, memory usage, amongst many other resources like disk-related and security related data, that can be monitored.

References:

<http://technet.microsoft.com/en-us/library/bb734903.aspx>

QUESTION 4

Your network contains an Active Directory domain named contoso.com. The domain contains a server named Server1.

Server1 runs Windows Server 2012 R2 and has the Hyper-V server role installed.

You have a virtual machine named VM1. VM1 has a checkpoint. You need to modify the Checkpoint File Location of VM1.

What should you do first?

- A. Copy the checkpoint file
- B. Delete the checkpoint
- C. Shut down VM1
- D. Pause VM1

Correct Answer: B

QUESTION 5

You have a server named File1 that runs Windows Server 2012 R2. File1 has the File Server role service installed. You plan to back up all shared folders by using Microsoft Online Backup.

You download and install the Microsoft Online Backup Service Agent on File1.

You need to ensure that you use Windows Server Backup to back up data to Microsoft Online Backup.

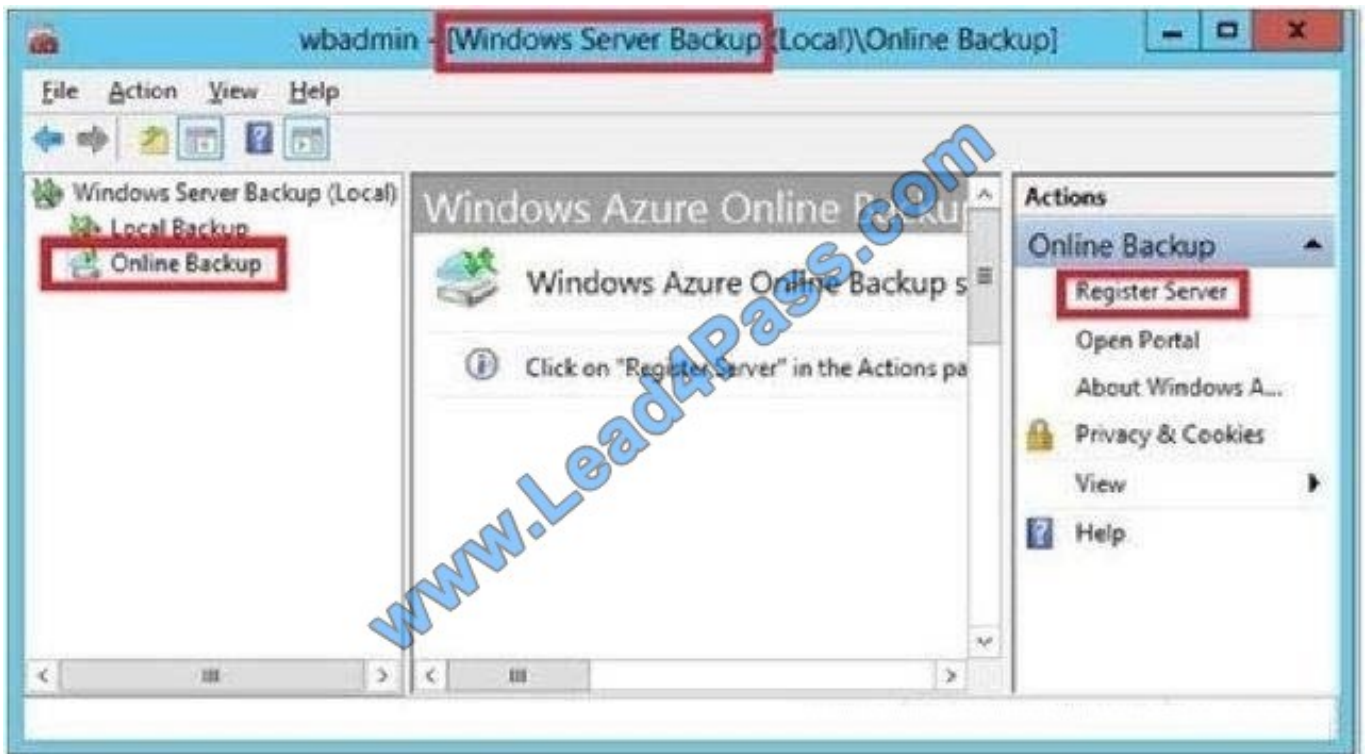
What should you do?



- A. From Computer Management, add the File1 computer account to the Backup Operators group.
- B. From the Services console, modify the Log On settings of the Microsoft Online Backup Service Agent.
- C. From Windows Server Backup, run the Register Server Wizard.
- D. From a command prompt, run wbadmin.exe enable backup.

Correct Answer: C

Download and install the Windows Azure Online Backup Agent After you create an account on the Windows Azure Online Backup website, you can download the Windows Azure Online Backup Agent and install it locally. An Online Backup node then appears in the navigation pane of the Windows Server Backup console, as shown in Figure 12



If you prefer, you can also configure online backups from the Windows Azure Online Backup console, which becomes available after you install the agent. The Windows Azure Online Backup console provides exactly the same set of options as the Online Backup node in the Windows Server Backup console.

Register server The next step is to register your server. Registering a server enables you to perform backups from that same server only. (Remember this point for the exam.) To register the server, from the Actions menu, select Register Server. The Register Server Wizard includes two configuration steps. First, you are given an opportunity to specify a proxy server if desired. Second, you are asked to provide a passphrase that will be used to encrypt your backup data and a location to save this passphrase in a file. You need to provide this passphrase when you perform a restore operation, so it's essential that you don't lose it. (Microsoft doesn't maintain a copy of your passphrase.) A Generate Passphrase option creates the passphrase for you automatically. After you register a server, new options for Online Backup appear in the Actions pane, including Schedule Backup, Recover Data, Change Properties, and Unregister Server.

QUESTION 6



HOTSPOT

You have a server named Server1 that runs Windows Server 2012 R2. The volumes on Server1 are configured as shown in the following table.

Volume name	File system	Disk type	BitLocker encrypted
Volume1	NTFS	Internal SATA	Yes
Volume2	NTFS	Internal SATA	No
Volume3	NTFS	USB flash drive	Yes
Volume4	NTFS	USB flash drive	No

A new corporate policy states that backups must use Windows Azure Backup whenever possible.

You need to identify which backup methods you must use to back up Server1. The solution must use Windows Azure Backup whenever possible.

Which backup type should you identify for each volume?

To answer, select the appropriate backup type for each volume in the answer area.

Hot Area:



Answer Area

Volume1
Windows Azure Backup
Windows Server Backup

Volume2
Windows Azure Backup
Windows Server Backup

Volume3
Windows Azure Backup
Windows Server Backup

Volume4
Windows Azure Backup
Windows Server Backup

Correct Answer:



Answer Area

Volume1
Windows Azure Backup
Windows Server Backup

Volume2
Windows Azure Backup
Windows Server Backup

Volume3
Windows Azure Backup
Windows Server Backup

Volume4
Windows Azure Backup
Windows Server Backup

<http://technet.microsoft.com/en-us/library/jj614621.aspx> <http://technet.microsoft.com/zh-cn/library/hh831419.aspx>

QUESTION 7

HOTSPOT

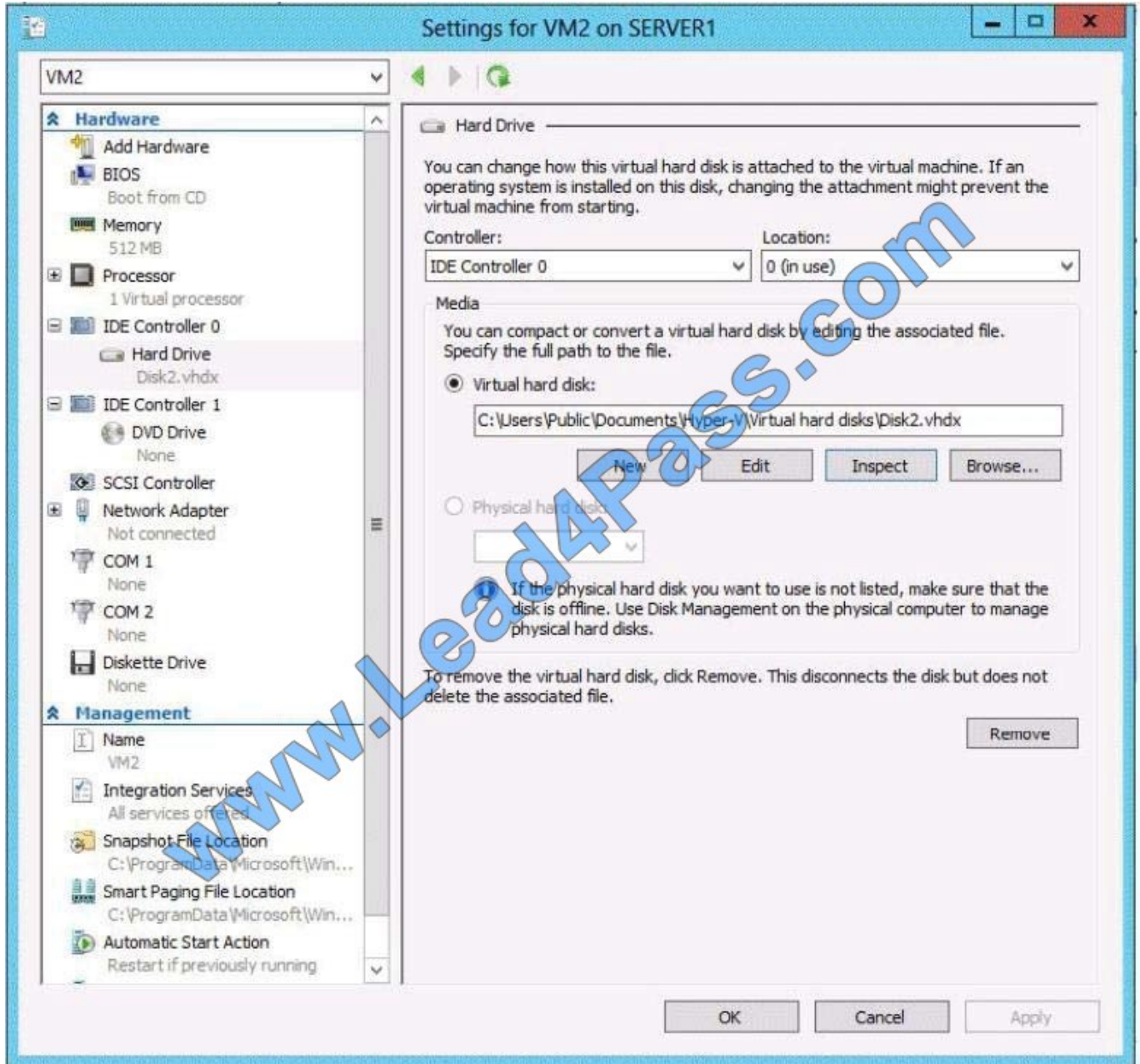
The settings for a virtual machine named VM2 are configured as shown in the VM2 exhibit.(Click the Exhibit button.)



The settings for Disk1.vhdx are configured as shown in the Disk1.vhdx exhibit. (Click the Exhibit button.)



The settings for Disk2.vhdx are configured as shown in the Disk2.vhdx exhibit.(Click the Exhibit button.)



Select Yes if the statement can be shown to be true based on the available information; otherwise select No. Each correct selection is worth one point.

Hot Area:



	Yes	No
You can compact Disk1.vhdx while VM2 is running.	<input type="checkbox"/>	<input type="checkbox"/>
You can compact Disk2.vhdx while VM2 is running.	<input type="checkbox"/>	<input type="checkbox"/>
You can convert Disk2.vhdx to a .vhd file while VM2 is running.	<input type="checkbox"/>	<input type="checkbox"/>

Correct Answer:

	Yes	No
You can compact Disk1.vhdx while VM2 is running.	<input type="checkbox"/>	<input checked="" type="checkbox"/>
You can compact Disk2.vhdx while VM2 is running.	<input type="checkbox"/>	<input checked="" type="checkbox"/>
You can convert Disk2.vhdx to a .vhd file while VM2 is running.	<input type="checkbox"/>	<input checked="" type="checkbox"/>

If you want to compact a differencing virtual hard disk or an undo disk, you must merge the changes to the parent disk and then compact the parent disk, if it is a dynamically expanding virtual hard disk. You can compact a dynamically expanding virtual hard disk. You cannot compact any other type of virtual hard disk. However, you can convert a fixed-size virtual hard disk to a dynamically expanding virtual hard disk and then compact the disk. If you want to compact a differencing virtual hard disk or an undo disk, you must merge the changes to the parent disk and then compact the parent disk, if it is a dynamically expanding virtual hard disk.

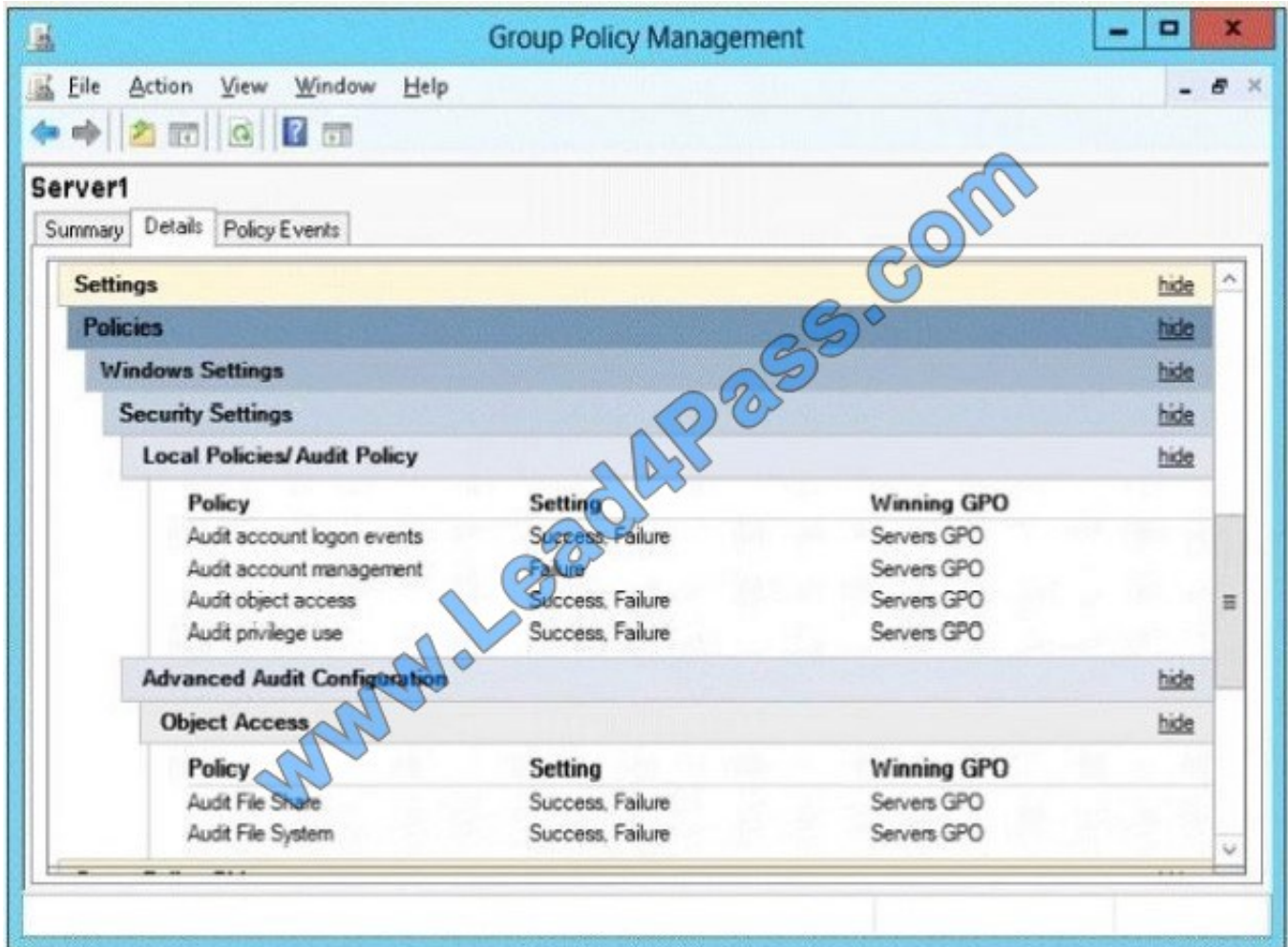
References: [http://technet.microsoft.com/en-us/library/cc708394\(v=ws.10\).aspx](http://technet.microsoft.com/en-us/library/cc708394(v=ws.10).aspx)



QUESTION 8

Your network contains an Active Directory domain named contoso.com. The domain contains a file server named Server1. On Server1 the operating system Windows Server 2012 R2 is installed. Check the RSoP of Server1. The effective settings are shown in the picture (click on the button drawing). You must ensure that an entry is recorded in the event log when it is on Server1 created or deleted a local user account.

How do you proceed?



You need to ensure that an entry is added to the event log whenever a local user account is created or deleted on Server1. What should you do?

- A. Change the settings of the audit policy in Group Policy Object (GPO) ServersGPO
- B. On Server1, attach a task to the security log.
- C. Add the System log on Server1 a task.
- D. Change the settings of the Advanced Audit Policy Configuration in Group Policy Object (GPO) ServersGPO

Correct Answer: A

From the figure it is evident that the policy Audit account management is enabled only for failed attempts. Must be monitored in order to monitor the creation and deletion of accounts also successful attempts of account management.



Audit

account management is determined whether all Account Management events are monitored on a computer with this security setting.

The account management events include:

A user account or user group is created, changed or deleted.

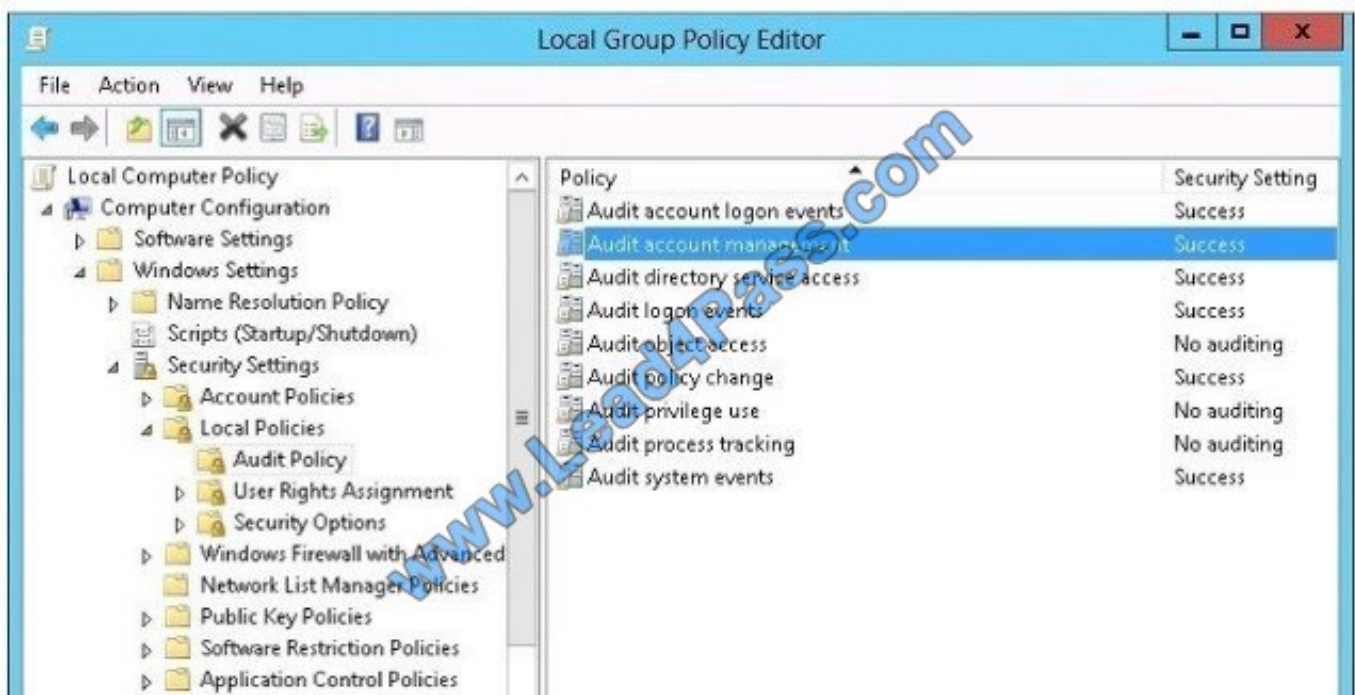
A user account is renamed, disabled or enabled.

A password is set or changed.

If you define this policy setting, you can specify whether success or failure can be monitored and specify that the event type is not monitored. Success audits generate an audit entry is generated when any account management event succeeds. Failure audits generate an audit entry is generated when any account management event fails. If you "No monitoring" want to set this value to, activate the dialog "Properties" for this policy setting check box "Define these policy settings" and uncheck the checkbox "success" and "failure". When you use Advanced Audit Policy Configuration settings, you need to confirm that these settings are not overwritten by basic audit policy settings. The following procedure shows how to prevent conflicts by blocking the application of any basic audit policy settings. Enabling Advanced Audit Policy ConfigurationBasic and advanced audit policy configurations should not be mixed. As such, it's best practice to enable Audit: Force audit policy subcategory settings (Windows Vista or later) to override audit policy category settings in Group Policy to make sure that basic auditing is disabled. The setting can be found under Computer Configuration\Policies\Security Settings\Local Policies\Security Options, and sets the SCENoApplyLegacyAuditPolicy registry key to prevent basic auditing being applied using Group Policy and the Local Security Policy MMC snap-in. In Windows 7 and Windows Server 2008 R2, the number of audit settings for which success and failure can be tracked has increased to 53. Previously, there were nine basic auditing settings under Computer Configuration\Policies\Windows Settings\Security Settings\Local Policies\Audit Policy. These 53 new settings allow you to select only the behaviors that you want to monitor and exclude audit results for behaviors that are of little or no concern to you, or behaviors that create an excessive number of log entries. In addition, because Windows 7 and Windows Server 2008 R2 security audit policy can be applied by using domain Group Policy, audit policy settings can be modified, tested, and deployed to selected users and groups with relative simplicity. Audit Policy settings -Any changes to user account and resource permissions. -Any failed attempts for user logon. -Any failed attempts for resource access. -Any modification to the system files. Advanced Audit Configuration Settings Audit compliance with important business-related and security-related rules by tracking precisely defined activities, such as: A group administrator has modified settings or data on servers that contain finance information. An employee within a defined group has accessed an important file. The correct system access control list (SACL) is applied to every file and folder or registry key on a computer or file share as a verifiable safeguard against undetected access. In Servers GPO, modify the Audit Policy settings -enabling audit account management setting will generate events about account creation, deletion and so on. Advanced Audit Configuration Settings Advanced Audit Configuration Settings >Audit Policy -> Account Management -> Audit User Account Management



In Servers GPO, modify the Audit Policy settings -enabling audit account management setting will generate events about account creation, deletion and so on



References: <http://blogs.technet.com/b/abizerh/archive/2010/05/27/tracing-down-user-and-computer-account-deletion-in->



active-directory.aspx <http://technet.microsoft.com/en-us/library/dd772623%28v=ws.10%29.aspx>
http://technet.microsoft.com/en-us/library/dd408940%28v=ws.10%29.aspx#BKMK_step2
[http://technet.microsoft.com/en-us/library/jj852202\(v=ws.10\).aspx](http://technet.microsoft.com/en-us/library/jj852202(v=ws.10).aspx) <http://www.petri.co.il/enable-advanced-audit-policy-configuration-windows-server.htm>

QUESTION 9

Your network contains one Active Directory domain named contoso.com. The domain contains three users named User1, User2, and User3. You need to ensure that the users can log on to the domain by using the user principal names (UPNs) shown in the following table.

User	UPN
User1	user1@adatum.com
User2	user2@litwareinc.com
User3	user3@tresearch.net

What should you use?

- A. the Set-ADDomain cmdlet
- B. the Add-DNSServerSecondaryZone cmdlet
- C. the Setspn command
- D. the Set-ADUser cmdlet

Correct Answer: D

References: <https://technet.microsoft.com/en-us/library/ee617215.aspx>

QUESTION 10

Note: This question is part of a series of questions that use the same or similar answer choices. An answer choice may be correct for more than one question in the series. Each question is independent of the other questions in this series.

Information and details provided in a question apply only to that question.

Your network contains one Active Directory domain named contoso.com. The forest functional level is Windows Server 2012. All servers run Windows Server 2012 R2. All client computers run Windows 8.1.

The domain contains 10 domain controllers and a read-only domain controller (RODC) named RODC01. All domain controllers and RODCs are hosted on a Hyper-V host that runs Windows Server 2012 R2.

You need to identify whether deleted objects can be recovered from the Active Directory Recycle Bin.

Which cmdlet should you use?

- A. Get-AdGroupMember



- B. Get-ADDomainControllerPasswordReplicationPolicy
- C. Get-ADDomainControllerPasswordReplicationPolicyUsage
- D. Get-ADDomain
- E. Get-ADOptionalFeature
- F. Get-ADAccountAuthorizationGroup
- G. Get-ADAuthenticationPolicySilo
- H. Get-ADAuthenticationPolicy

Correct Answer: E

The Get-ADOptionalFeature cmdlet gets an optional feature or performs a search to retrieve multiple optional features from an Active Directory. Example: Get-ADOptionalFeature '\\Recycle Bin Feature\\' Get the optional feature with the name '\\Recycle Bin Feature\\'.

References: <https://technet.microsoft.com/en-us/library/ee617218.aspx>

QUESTION 11

Your network contains a Hyper-V host named Hyperv1. Hyperv1 runs Windows Server 2012 R2.

Hyperv1 hosts four virtual machines named VM1, VM2, VM3, and VM4. All of the virtual machines run Windows Server 2008 R2.

You need to view the amount of memory resources and processor resources that VM4 currently uses.

Which tool should you use on Hyperv1?

- A. Task Manager
- B. Windows System Resource Manager (WSRM)
- C. Hyper-V Manager
- D. Resource Monitor

Correct Answer: C

QUESTION 12

You work for a company named ABC.com. Your role of Network Administrator includes the management of the company's physical and virtual infrastructure. The network includes servers running Windows Server 2008 R2 Service Pack 1 (SP1) and Windows Server 2012.

Virtual machines (VMs) are hosted on Windows Server 2012 servers running the Hyper-V role. You install a new Windows Server 2012 Hyper-V host server named ABC-HVHost13. ABC-HVHost13 has eight physical network adapters configured as four network adapter teams. You plan to create five external Hyper-V virtual switches on ABC-HVHost13.



Which of the following steps should you perform first? (Choose two possible answers).

- A. You should run the Remove-NetLbfoTeam PowerShell cmdlet.
- B. You should run the Add-NetLbfoTeam PowerShell cmdlet.
- C. You should run the Remove- NetLbfoTeamMemberPowerShell cmdlet.
- D. You should run the Add-NetLbfoTeamNic PowerShell cmdlet.
- E. You should run the Add-NetLbfoTeamMember PowerShell cmdlet.

Correct Answer: AC

[70-417 Study Guide](#)

[70-417 Exam Questions](#)

[70-417 Braindumps](#)



To Read the [Whole Q&As](#), please purchase the [Complete Version](#) from [Our website](#).

Try our product !

100% Guaranteed Success

100% Money Back Guarantee

365 Days Free Update

Instant Download After Purchase

24x7 Customer Support

Average 99.9% Success Rate

More than 800,000 Satisfied Customers Worldwide

Multi-Platform capabilities - [Windows](#), [Mac](#), [Android](#), [iPhone](#), [iPod](#), [iPad](#), [Kindle](#)

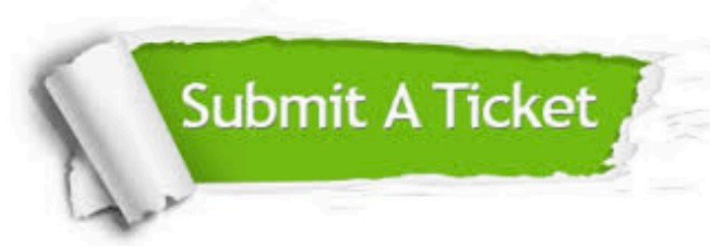
We provide exam PDF and VCE of Cisco, Microsoft, IBM, CompTIA, Oracle and other IT Certifications. You can view Vendor list of All Certification Exams offered:

<https://www.lead4pass.com/allproducts>

Need Help

Please provide as much detail as possible so we can best assist you.

To update a previously submitted ticket:



 <p>One Year Free Update Free update is available within One Year after your purchase. After One Year, you will get 50% discounts for updating. And we are proud to boast a 24/7 efficient Customer Support system via Email.</p>	 <p>Money Back Guarantee To ensure that you are spending on quality products, we provide 100% money back guarantee for 30 days from the date of purchase.</p>	 <p>Security & Privacy We respect customer privacy. We use McAfee's security service to provide you with utmost security for your personal information & peace of mind.</p>
---	---	--

Any charges made through this site will appear as Global Simulators Limited.

All trademarks are the property of their respective owners.

Copyright © lead4pass, All Rights Reserved.