

100% Money Back Guarantee

Vendor: Microsoft

Exam Code: 70-741

Exam Name: Networking with Windows Server 2016

Version: Demo

QUESTION 1

Your company has 5,000 users who work remotely.

You have 40 VPN servers that host the remote connections for the users.

You plan to deploy a RADIUS solution that contains five RADIUS servers.

You need to ensure that client authentication requests are distributed evenly between the five RADIUS servers.

What should you do?

- A. Install the Network Load Balancing role service on all of the RADIUS server. Configure all of the RADIUS clients to connect to a virtual IP address.
- B. Deploy RAS Gateway to a new server. Configure all of the RADIUS clients to connect to RAS Gateway.
- C. Install the Failover Clustering role service on all of the RADIUS servers. Configure all of the RADIUS clients to connect to the IP address of the cluster.
- D. Deploy a RADIUS proxy to a new server. Configure all of the RADIUS clients to connect to the RADIUS proxy.

Correct Answer: D

QUESTION 2

You have a server named Server1 that runs Windows Server 2016 and is configured as a domain controller.

You install the DNS Server server role on Server1.

You plan to store a DNS zone in a custom Active Directory partition.

You need to create a new Active Directory partition for the zone.

What should you use?

- A. Set-DnsServer
- B. Active Directory Sites and Services
- C. Dns.exe
- D. Dnscmd.exe

Correct Answer: D

QUESTION 3

Note: This question is part of a series of questions that use the same scenario. For your convenience, the scenario is repeated in each question. Each question presents a different goal and answer choices, but the text of the scenario is exactly the same in each question in this series.

Your network contains an Active Directory domain named contoso.com. The functional level of the domain is Windows Server 2012.

The network uses an address space of 192.168.0.0/16 and contains multiple subnets.

The network is not connected to the Internet.

The domain contains three servers configured as shown in the following table.

Server name	Configuration
Server1	Domain controller and DNS server
Server2	Member server
Server3	DHCP server

Client computers obtain TCP/IP settings from Server3.

You add a second network adapter to Server2. You connect the new network adapter to the Internet. You install the Routing role service on Server2.

Server1 has four DNS zones configured as shown in the following table.

DNS zone name	Type	Zone file name
Contoso.com	Active Directory-integrated	None
Fabrikam.com	Primary	Fabrikam.com.dns
Tailspintoys.com	Primary	Tailspintoys.com.dns
168.192.in-addr.arpa	Primary	168.192.in-addr.arpa.dns

What should you do to enable Server2 as a NAT server?

- A. From Routing and Remote Access, add an interface.
- B. From Windows PowerShell, run the New-RoutingGroupConnector cmdlet.
- C. From Routing and Remote Access, add a routing protocol.
- D. From Windows PowerShell, run the Install-WindowsFeature cmdlet.

Correct Answer: A

QUESTION 4

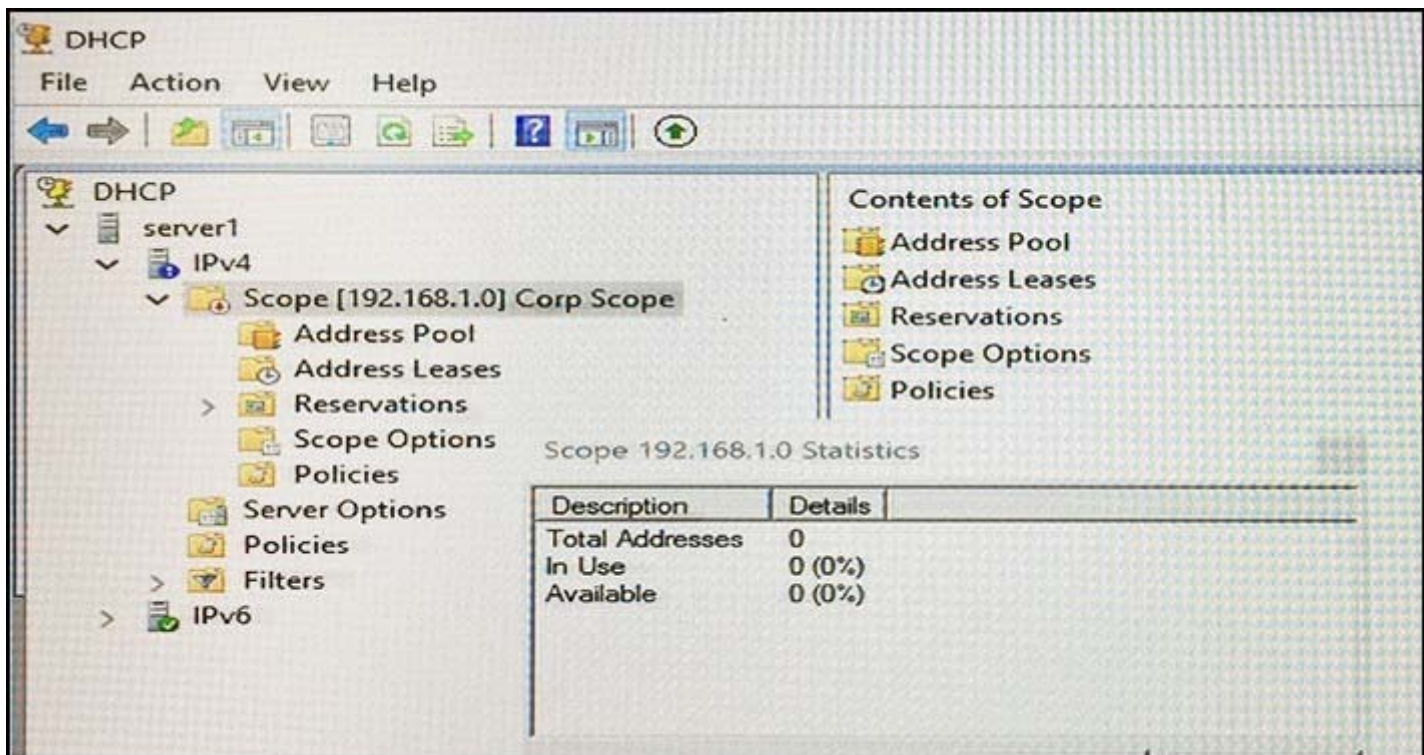
Note: This question is part of a series of questions that present the same scenario. Each question in the series contains a unique solution that might meet the stated goals. Some question sets might have more than one correct solution, while others might not have a correct solution.

After you answer a question in this sections, you will NOT be able to return to it. As a result, these questions will not appear in the review screen.

Your network contains an Active Directory domain named contoso.com. The domain contains a DHCP server named Server1. All client computers run Windows 10 and are configured as DHCP clients.

Your helpdesk received calls today from users who failed to access the network from their Windows 10 computer.

You open the DHCP console as shown in the exhibit. (Click the Exhibit button.)



You need to ensure that all of the Windows 10 computers can receive a DHCP lease.

Solution: You activate the scope.

Does this meet the goal?

- A. Yes
- B. No

Correct Answer: A

QUESTION 5

Your company has a main office in London and a branch office in Seattle. The offices connect to each other by using a WAN link.

In the London office, you have a Distributed File System (DFS) server named FS1 that contains a folder named Folder1.

In the Seattle office, you have a DFS server named FS2.

All servers run Windows Server 2016.

You configure replication of Folder1 to FS2.

Users in both offices frequently add files in Folder1.

You monitor DFS Replication, and you discover excessive replication over the WAN link during business hours.

You need to reduce the amount of bandwidth used for replication during business hours. The solution must ensure that the users can continue to save content to Folder1.

What should you do?

- A. Modify the quota settings on Folder1 on FS2.
- B. Modify the properties of the replication group.

- C. Configure the copy of Folder1 on FS2 as read-only.
- D. Modify the replicated folder properties of Folder1 on FS1.

Correct Answer: B

QUESTION 6

Note: This question is part of a series of questions that present the same scenario. Each question in the series contains a unique solution. Determine whether the solution meets the stated goals.

Your network contains an Active Directory domain named contoso.com. The domain contains a DNS server named Server1. All client computers run Windows 10.

On Server1, you have the following zone configuration.

ZoneName	ZoneType	IsAutoCreated	IsDsIntegrated	IsReverseLookupZone	IsSigned
_msdcs.contoso.com	Primary	False	True	False	False
adatum.com	Forwarder	False	False	False	False
contoso.com	Primary	False	True	False	False
fabrikam.com	Primary	False	False	False	True
TrustAnchors	Primary	False	True	False	False

You have the following subnets defined on Server1.

Name	IPV4Subnet	IPV6Subnet
Subnet1	{10.0.0.0/24}	
Subnet2	{10.0.1.0/24}	
Subnet3	{192.168.15.0/24}	
Subnet4	{172.16.1.0/24}	

You need to prevent Server1 from resolving queries from DNS clients located on Subnet4. Server1 must resolve queries from all other DNS clients.

Solution: From Windows Firewall with Advanced Security on Server1, you create an inbound rule.

Does this meet the goal?

- A. Yes
- B. No

Correct Answer: B

QUESTION 7

Note: This question is part of a series of questions that present the same scenario. Each question in the series contains a unique solution that might meet the stated goals. Some question sets might have more than one correct solution, while others might not have a correct solution.

After you answer a question in this sections, you will NOT be able to return to it. As a result, these questions will not appear in the review screen.

Your network contains an Active Directory domain named contoso.com. The domain contains a member server named Server1 that runs Windows Server 2016 and has the DNS Server role installed. Automatic scavenging of state records is enabled and the scavenging period is set to 10 days.

All client computers dynamically register their names in the contoso.com DNS zone on Server1.

You discover that the names of multiple client computers that were removed from the network several weeks ago can still be resolved.

To Read the [Whole Q&As](#), please purchase the [Complete Version](#) from [Our website](#).

Trying our product !


- ★ **100%** Guaranteed Success
- ★ **100%** Money Back Guarantee
- ★ **365 Days** Free Update
- ★ **Instant Download** After Purchase
- ★ **24x7** Customer Support
- ★ Average **99.9%** Success Rate
- ★ More than **69,000** Satisfied Customers Worldwide
- ★ Multi-Platform capabilities - **Windows, Mac, Android, iPhone, iPod, iPad, Kindle**

Need Help

Please provide as much detail as possible so we can best assist you.

To update a previously submitted ticket:



 <p>One Year Free Update Free update is available within One Year after your purchase. After One Year, you will get 50% discounts for updating. And we are proud to boast a 24/7 efficient Customer Support system via Email.</p>	 <p>Money Back Guarantee To ensure that you are spending on quality products, we provide 100% money back guarantee for 30 days from the date of purchase.</p>	 <p>Security & Privacy We respect customer privacy. We use McAfee's security service to provide you with utmost security for your personal information & peace of mind.</p>
---	---	--

Guarantee & Policy | Privacy & Policy | Terms & Conditions

Any charges made through this site will appear as Global Simulators Limited.

All trademarks are the property of their respective owners.