

830-01^{Q&As}

RCPE Certified Professional WAN Optimization

Pass Riverbed 830-01 Exam with 100% Guarantee

Free Download Real Questions & Answers **PDF** and **VCE** file from:

<https://www.leads4pass.com/830-01.html>

100% Passing Guarantee
100% Money Back Assurance

Following Questions and Answers are all new published by Riverbed
Official Exam Center

-  **Instant Download** After Purchase
-  **100% Money Back** Guarantee
-  **365 Days** Free Update
-  **800,000+** Satisfied Customers



QUESTION 1

After upgrading the Steelhead Mobile Controller to the latest software release, it requires a reboot. During the reboot, what would happen to the users connected to the Steelhead Mobile Controller via the Steelhead Mobile client?

- A. All optimization ceases to function
- B. Existing connections are reset, but subsequent connections will be optimized
- C. The Steelhead Mobile client informs the user to reboot their computer
- D. No disruption to the end user
- E. Only Layer 7 optimization is affected; all other optimization remain unaffected

Correct Answer: D

QUESTION 2

What is the CLI command for starting the Configuration Wizard?

- A. # configuration wizard start
- B. (config) # configuration jump-start
- C. # configuration start
- D. (config) # wizard start
- E. restart clean

Correct Answer: B

QUESTION 3

By default, which Steelhead appliances are placed in an Interceptor appliance's auto pool?

- A. All Steelhead appliances in the network
- B. Peer-neighbor Steelhead appliances as targets in one Load Balancing rule
- C. Peer-neighbor Steelhead appliances not assigned as targets in any Load Balancing rule
- D. Peer-neighbor Steelhead appliances assigned to all current Load Balancing rules

Correct Answer: C

QUESTION 4

Which option below best describes the WCCP redirection supported by a SteelHead?

- A. Ports Mode
- B. GRE only
- C. PBR
- D. GRE or L2
- E. L2 only

Correct Answer: D

QUESTION 5

-- Exhibit -- Exhibit -Refer to the exhibit. A Steelhead administrator has recently decided to implement two Interceptor appliances and one Steelhead appliance on his data center. After configuring the Interceptor, he noticed they are not forwarding traffic to the Steelhead. Why? (Select 2)

Alarm	Status
▶ Admission Control	OK
CPU Utilization	Disabled
▶ Disk Full	OK
Duplex	OK
▶ Hardware	OK
▶ Licensing	OK
▶ Link State	Disabled
▶ Link State Propagation	OK
▶ Load Balancing Alerts	OK
▼ Local Cluster Alerts:	Needs Attention
Local Interceptor Disconnection Alert	OK
Local Steelhead Disconnection Alert	Needs Attention
Disconnected Steelheads: SH10	Needs Attention

- A. The Steelhead appliance was not added into the Interceptor appliance configuration.

- B. The Interceptor appliance was not added into the Steelhead appliance "add an IC" option on the Steelhead appliance config.
- C. The Interceptor appliance was not added as a connection forwarding neighbor on the Steelhead appliance.
- D. The Steelhead appliance is down.

Correct Answer: CD

QUESTION 6

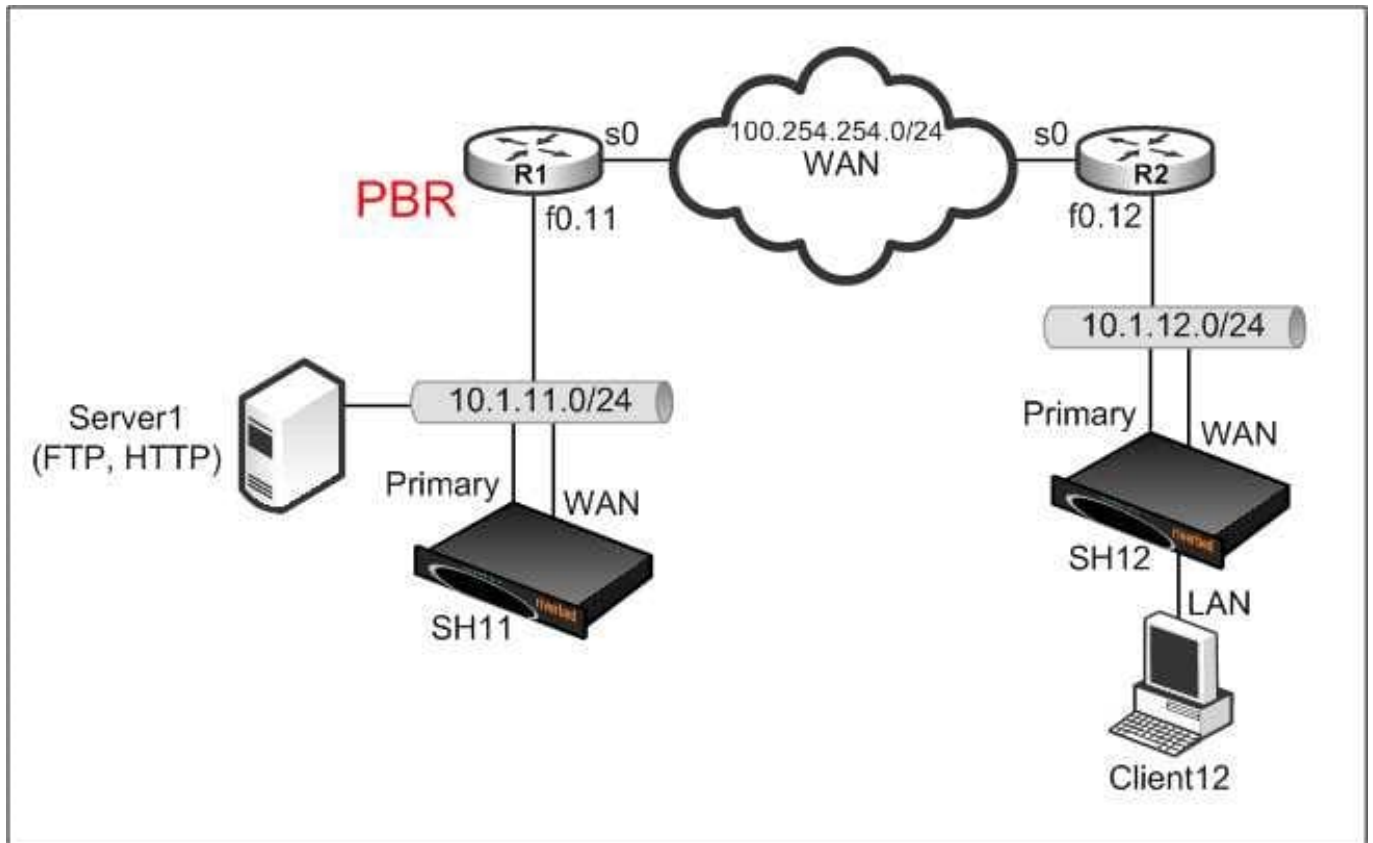
The Interceptor appliance can be configured to redirect traffic to the Steelhead appliances via what methods?

- A. GRE
- B. L2
- C. ISIS
- D. Multicast
- E. Redirection is automatic and not configurable

Correct Answer: E

QUESTION 7

A server-side logical in-path deployment is shown in the exhibit. Additionally, SH12 is configured with a fixed-target rule pointing to SH11. The client behind SH12 will not be able to establish a connection to SERVER1 as a logical loop will occur when the number of optimized connections in SH11 has reached the maximum system limit.



What is the best way to resolve this issue?

- A. Use the largest Steelhead appliance model
- B. Enter the "in-path loopguard enable" command
- C. Use more than one Steelhead appliance
- D. Limit the number of TCP connections to be optimized
- E. Put SERVER1 in a different subnet from SH11

Correct Answer: E

QUESTION 8

The Primary interface is REQUIRED for which deployment methods and features?

- 1) In-path
- 2) Server-side out-of-path
- 3) Logical in-path (WCCP/PBR)
- 4) Hybrid Mode
- 5) Proxy File Services (PFS)

- A. 2
- B. 1, 2
- C. 2, 3
- D. 2, 4
- E. 2, 4, 5

Correct Answer: E

QUESTION 9

On Steelheads, by default tcpdump:

- A. captures packets with an 802.1Q tag.
- B. does not capture packets with an 802.1Q tag
- C. does not capture packets with an 803.3Q tag.
- D. does not capture packets with an 802.11Q tag.

Correct Answer: B

QUESTION 10

In a previously optimized environment, users have recently upgraded their Windows XP workstations to Windows 7. After the upgrade, users are complaining about slow CIFS and encrypted MAPI performance. What is the most likely cause?

- A. The Steelhead appliance is only configured for transparent mode for SMB signing and MAPI encryption.
- B. Windows 7 is not supported.
- C. The client-side Steelhead appliance is not joined to the domain.
- D. The server-side Steelhead appliance is not joined to the domain.
- E. The Steelhead appliance only supports NTLM.

Correct Answer: A

QUESTION 11

Regarding the registering of Steelhead appliances,

- A. Local appliances (on the same IP subnet) are automatically registered every time because their 10byte probe is intercepted by the CMC appliance

- B. Remote appliances are registered when a fixed-target rule is applied to the appliance directing it to the CMC appliance
- C. Remote appliances are registered by proxy via the server-side Steelhead appliance
- D. Remote appliances are registered manually when they have not auto-registered with the CMC appliance
- E. Local appliances can only be registered manually, since fixed-target rules may only be applied to remote Steelhead appliances

Correct Answer: D

QUESTION 12

What is the default trap severity for system messages?

- A. Debugging
- B. Informational
- C. Notice
- D. Warning

Correct Answer: C

QUESTION 13

Which deployment options are available to Virtual SteelHead on ESXi?

- A. Physical In-path (with Riverbed bypass NIC)
- B. Virtual In-path
- C. Out-of-path
- D. Server-side Out-of-Path
- E. All of the above

Correct Answer: ABC

QUESTION 14

What happens to traffic when a Steelhead appliance reports admission control?

- A. Traffic will be interrupted
- B. The Steelhead stops the interception of new connections for optimization for as long as it is in admission control
- C. This is just a report and the Steelhead will continue to optimize traffic

D. The Steelhead will start optimizing faster any new connections

E. The Steelhead will shut down in less than a minute

Correct Answer: B

QUESTION 15

How many failover buddies can be configured for a single Interceptor?

A. 1

B. 2

C. 3

D. 4

E. No limit

Correct Answer: A

[Latest 830-01 Dumps](#)

[830-01 Study Guide](#)

[830-01 Braindumps](#)