

CBAF-001^{Q&As}

Certified Business Analyst - Foundation

Pass GAQM CBAF-001 Exam with 100% Guarantee

Free Download Real Questions & Answers **PDF** and **VCE** file from:

<https://www.leads4pass.com/cbaf-001.html>

100% Passing Guarantee
100% Money Back Assurance

Following Questions and Answers are all new published by GAQM
Official Exam Center

-  **Instant Download** After Purchase
-  **100% Money Back** Guarantee
-  **365 Days** Free Update
-  **800,000+** Satisfied Customers



QUESTION 1

What does the 0\\ stand for in the CATVVOE analysis?

- A. The objectives of the business system under review.
- B. The opportunities for change in the business system under review.
- C. The organization of the business system under review.
- D. The owner of the business system under review.

Correct Answer: D

QUESTION 2

Which of the following is likely to be an input into the Analysing the Needs\\ stage of the business analysis process model?

- A. Shortlist of business options.
- B. Validated requirements document.
- C. The business case.
- D. Agreed business activity model

Correct Answer: D

QUESTION 3

Which of the following would BEST be managed with the "keep satisfied" stakeholder management strategy?

- A. Those with high power/influence and no interest in the project.
- B. Those with high power/influence and some interest in the project.
- C. Those with some power/influence and high interest in the project.
- D. Those with some power/influence and some interest in the project.

Correct Answer: B

QUESTION 4

What are business case development, subject matter expertise and procurement all examples of?

- A. Behavioural skill competencies required by business analysts.

- B. Business knowledge competencies required by business analysts.
- C. Technique competencies required by business analysts.
- D. Personal knowledge competencies required by business analysts.

Correct Answer: B

QUESTION 5

Different reactions may be observed when a change to working methods is proposed. These reactions include:

- a.
Enthusiasm for the change.
- b.
Fear of the change.
- c.
Reduced performance on the job.
- d.
Reluctant acceptance of the change.

Which of the following represents the typical sequence of these four reactions?

- A. b, d, c and a.
- B. a, b, c and d.
- C. b, c, d and a.
- D. a, b, d and c.

Correct Answer: C

QUESTION 6

What is the MoSCoW principle used for?

- A. To analyse stakeholders.
- B. To determine strategy.
- C. To define a root definition.
- D. To prioritise requirements.

Correct Answer: D

QUESTION 7

A project reporting system stores information about Employees. How would an Employee be represented in an entity-relationship diagram?

- A. As an Actor.
- B. As an Attribute.
- C. As an Entity.
- D. As a Relationship.

Correct Answer: C

QUESTION 8

A well-formed requirement is said to comply with which of the following acronyms?

- A. MOSCOW.
- B. SMART.
- C. OSCAR.
- D. MOST.

Correct Answer: B

QUESTION 9

Which of the following would be an appropriate name for a use case that allows a project manager to allocate resources to a project?

- A. Assign resources.
- B. Resource.
- C. Project Manager.
- D. Project.

Correct Answer: A

QUESTION 10

What occurs at handoffs when two actors do not synchronize their work?

- A. Errors.
- B. Queues.
- C. Functions.
- D. Decisions.

Correct Answer: B

QUESTION 11

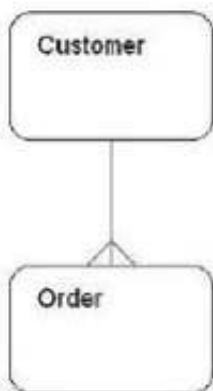
Which of the following models shows the driving and resisting forces of change?

- A. Force field analysis.
- B. Five forces model.
- C. Power/impact grid.
- D. Learning cycle.

Correct Answer: A

QUESTION 12

The entity relationship model below shows the relationship between Customer and Order. Which of the following business rules is correct?



- A. An order may be placed by many customers.
- B. A customer may place many orders.
- C. A customer may never place an order.
- D. An order need not be placed by a customer.

Correct Answer: B

QUESTION 13

When are workshops especially valuable?

- A. When suitably sized rooms are available.
- B. When all stakeholders are agreed on the way forward.
- C. When a geographically dispersed set of users' needs to be consulted.
- D. When time and budget are constrained.

Correct Answer: D

QUESTION 14

When undertaking a CATWOE' analysis, which sequence should the first four letters be considered in?

- A. W, T, C, A
- B. T, W, C, A
- C. W, C, T, A
- D. T, A, W, C

Correct Answer: A

QUESTION 15

The table below shows the costs and savings associated with a project. In which of the following years does the project break even?

Item	Year 0	Year 1	Year 2	Year 3	Year 4
Hardware	£250,000	£0	£0	£0	£0
Software Acquisition	£75,000	£0	£0	£0	£0
Maintenance	£10,000	£11,000	£12,000	£13,000	£14,000
User Training	£5,000	£0	£0	£0	£0
Savings	£40,000	£100,000	£100,000	£100,000	£100,000

- A. Year 2.
- B. Year 3.
- C. Year 4.
- D. The project does not pay back within the four year period.

Correct Answer: C

[CBAF-001 VCE Dumps](#)

[CBAF-001 Practice Test](#)

[CBAF-001 Study Guide](#)