

TMPTE^{Q&As}

TMap NEXT® Test Engineer

Pass EXIN TMPTE Exam with 100% Guarantee

Free Download Real Questions & Answers **PDF** and **VCE** file from:

<https://www.leads4pass.com/tmppte.html>

100% Passing Guarantee
100% Money Back Assurance

Following Questions and Answers are all new published by EXIN
Official Exam Center

- ⚙️ **Instant Download** After Purchase
- ⚙️ **100% Money Back** Guarantee
- ⚙️ **365 Days** Free Update
- ⚙️ **800,000+** Satisfied Customers



QUESTION 1

See the decision and test situations below: $R = (A \text{ AND } B) \text{ OR } C$

| | | |
|-----------|---------|---------|
| 1.A=false | B=true | C=false |
| 2.A=false | B=false | C=true |
| 3.A=true | B=true | C=false |

Which test situation is missing if the coverage type decision points modified condition/decision coverage is used?

A.

| | | |
|--------|--------|--------|
| A=true | B=true | C=true |
|--------|--------|--------|

B.

| | | |
|--------|---------|---------|
| A=true | B=false | C=false |
|--------|---------|---------|

A. B.

Correct Answer: B

QUESTION 2

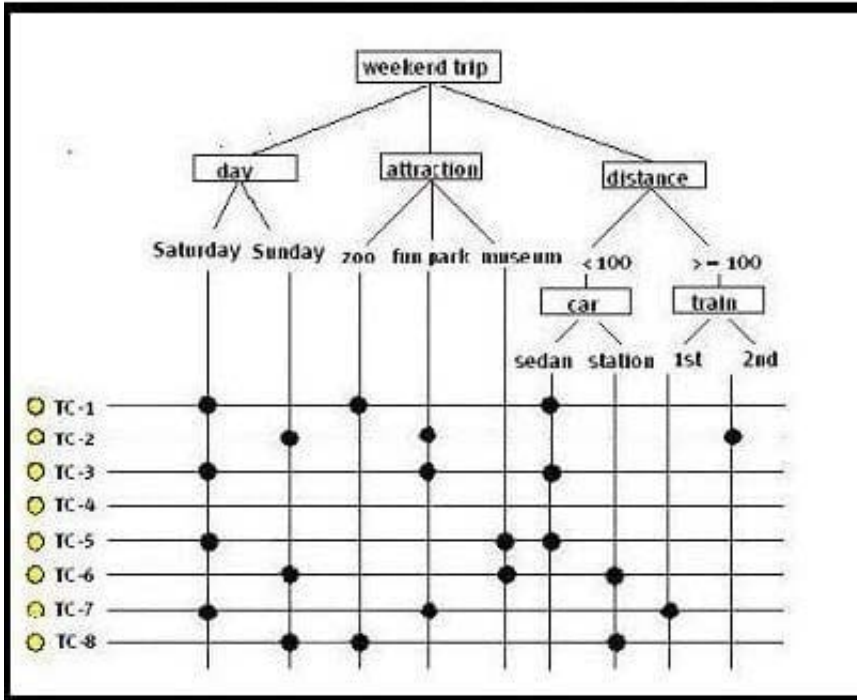
See the illustration below:

To test a registration application for a weekend trip, logical test cases must be created in accordance with the Data Combination Test. In addition, it has been agreed that less depth testing must be performed. One data pair has been defined

that must be fully tested in combination:

car - attraction

Eight test cases are designed using a classification tree.



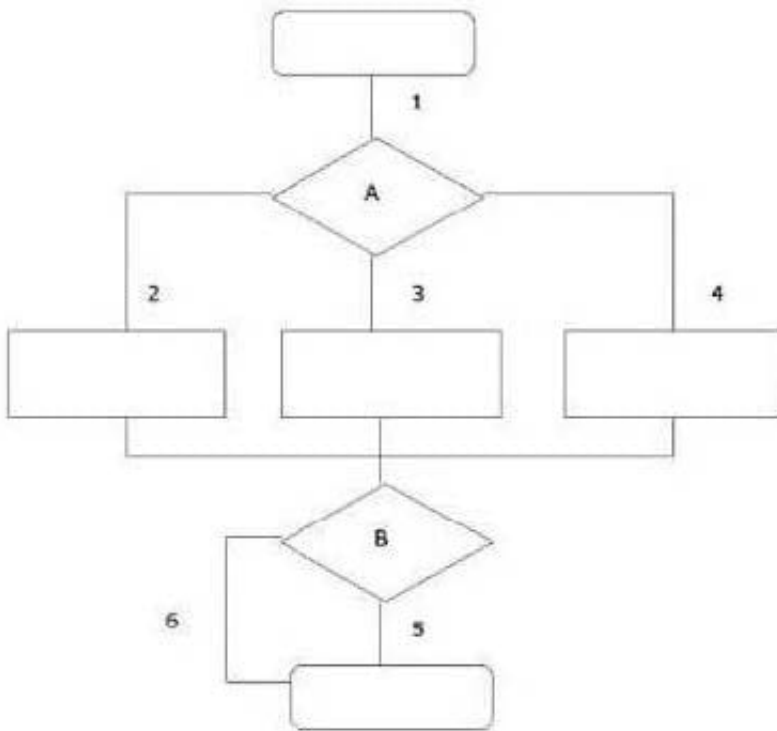
Where must the 'bullets' for test case 4 be placed?

- A. Saturday, fun park, 2nd
- B. Sunday, museum, station
- C. Sunday, fun park, station

Correct Answer: C

QUESTION 3

See the illustration below:



What is the minimum number of logical test cases generated by the use of the Process Cycle Test if the coverage type paths test depth level 2 is used?

- A. 3
- B. 5
- C. 6
- D. 9

Correct Answer: C

QUESTION 4

What is to be preserved in the activity reserving the testware? What is to be preserved in the activity reserving the testware?

- A. all testware created during the project
- B. a selection of the testware in consultation with the future administrator

Correct Answer: B

QUESTION 5

Which defect has an internal cause that can be solved within the test team?

- A. a defect in the test basis
- B. a defect in the test specification
- C. a defect in the test object

Correct Answer: B

QUESTION 6

See the specification below in which a decision point is described:

$R = (D \text{ OR } E) \text{ AND } F$

Use of the coverage type decision points modified condition/decision coverage produces the following table with test situations:

| $R = (D \text{ OR } E) \text{ AND } F$ | 1 | 0 |
|--|----------------|----------------|
| D | 101 | 001 |
| E | ... | 001 |
| F | 101 | 100 |

Which values are missing where the dots are stated to make the table complete?

- A. 010
- B. 011
- C. 110
- D. 111

Correct Answer: B

QUESTION 7

A structured testing approach is characterized by:

providing concrete footholds covering the full scope and describing the complete range of relevant aspects providing a structure, so that it is clear what exactly by whom, when and in what sequence has to be done. What is the fourth characteristic?

- A. it delivers insight into and advice on any risks in respect of the quality of the tested system
- B. managing test activities in the context of time, money and quality
- C. the testing is on the critical path of the total development, as briefly as possible, so that the total lead time of development is shortened
- D. to find defects at an early stage

Correct Answer: B

QUESTION 8

For the creation of the central starting point there are several techniques. In the given situation it is necessary that consistency between the data entered is guaranteed. Which of the techniques below is preferable if only one technique may be used?

- A. use of production data
- B. entering through separate front-end software
- C. entering through regular system functions

Correct Answer: C

QUESTION 9

Which test design technique can be used to test performance?

- A. Data Cycle Test
- B. Process Cycle Test
- C. Real-Life Test

Correct Answer: C

QUESTION 10

See the specification of a discount campaign below:

| $R = (D \cup E) \cap F$ | 1 | 0 |
|-------------------------|----------------|----------------|
| D | 101 | 001 |
| E | ... | 001 |
| F | 101 | 100 |

How many equivalence classes can be distinguished from the above specification?

B. 4

C. 5

Correct Answer: B

[Latest TMPTE Dumps](#)

[TMPTE VCE Dumps](#)

[TMPTE Study Guide](#)